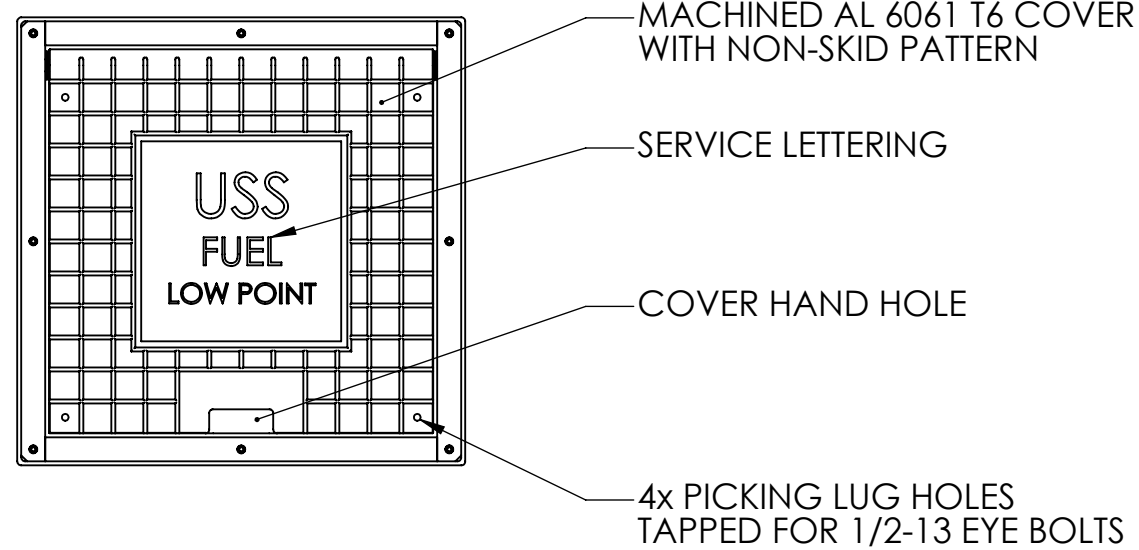
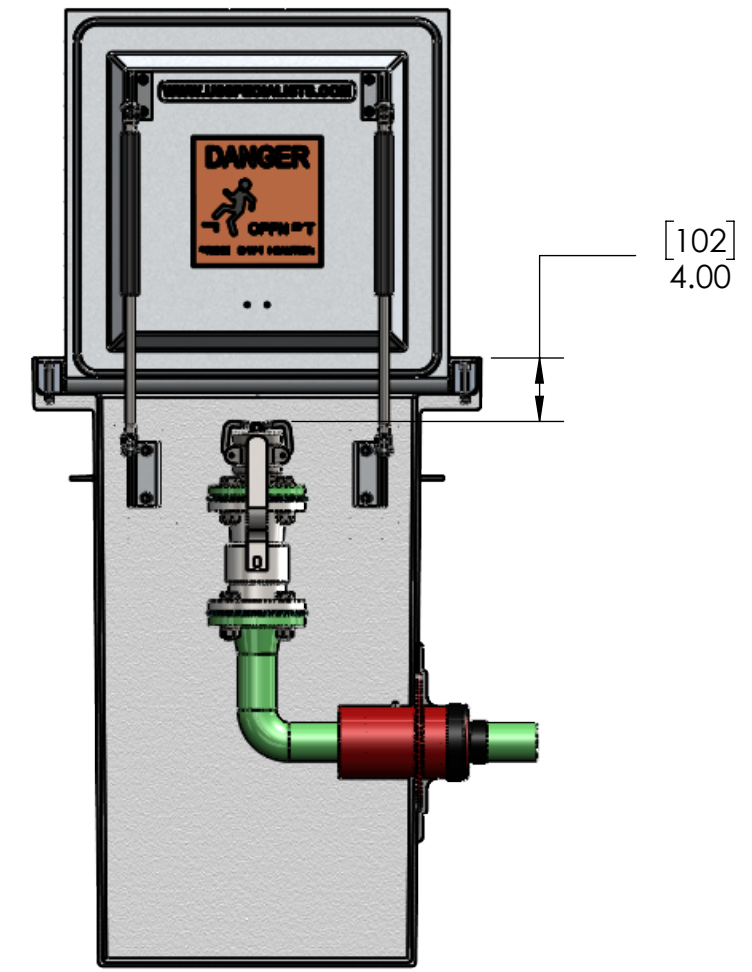


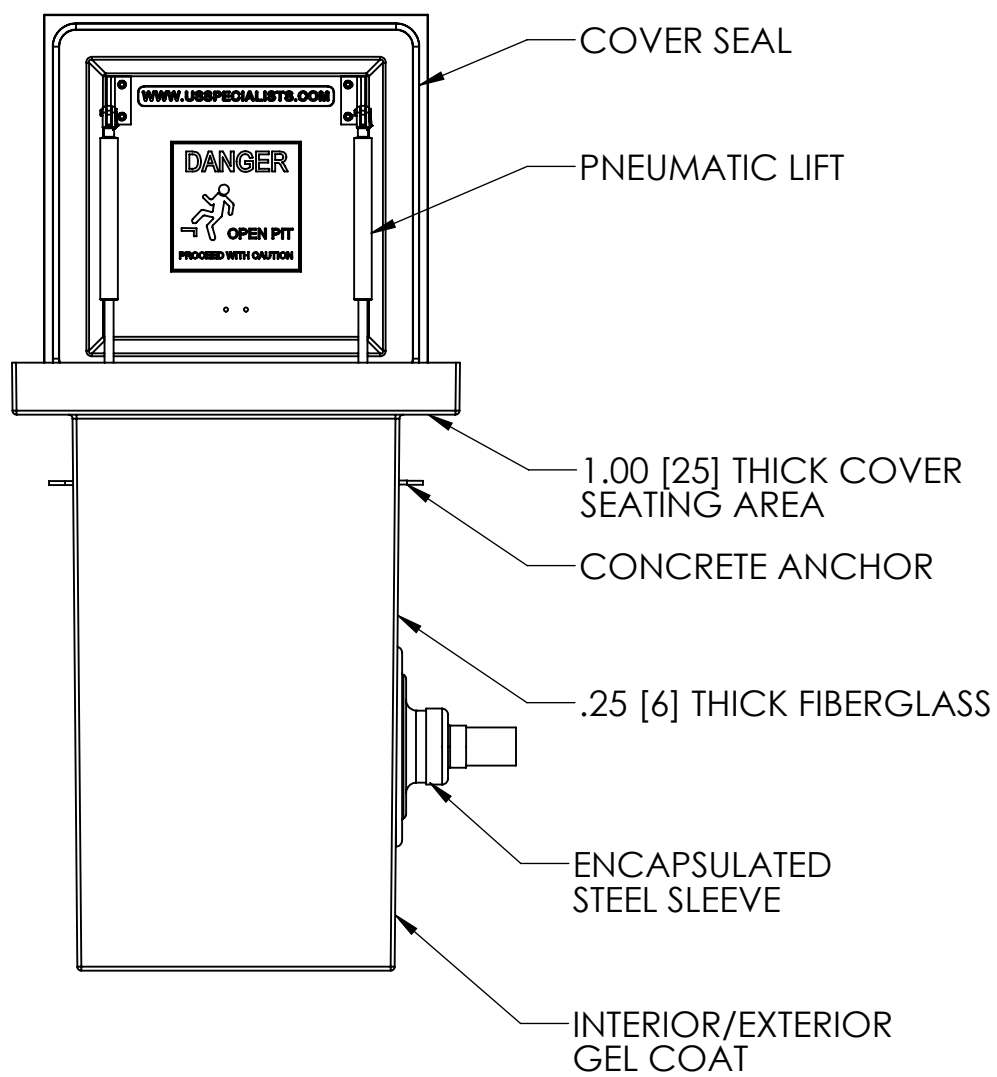
TOP VIEW



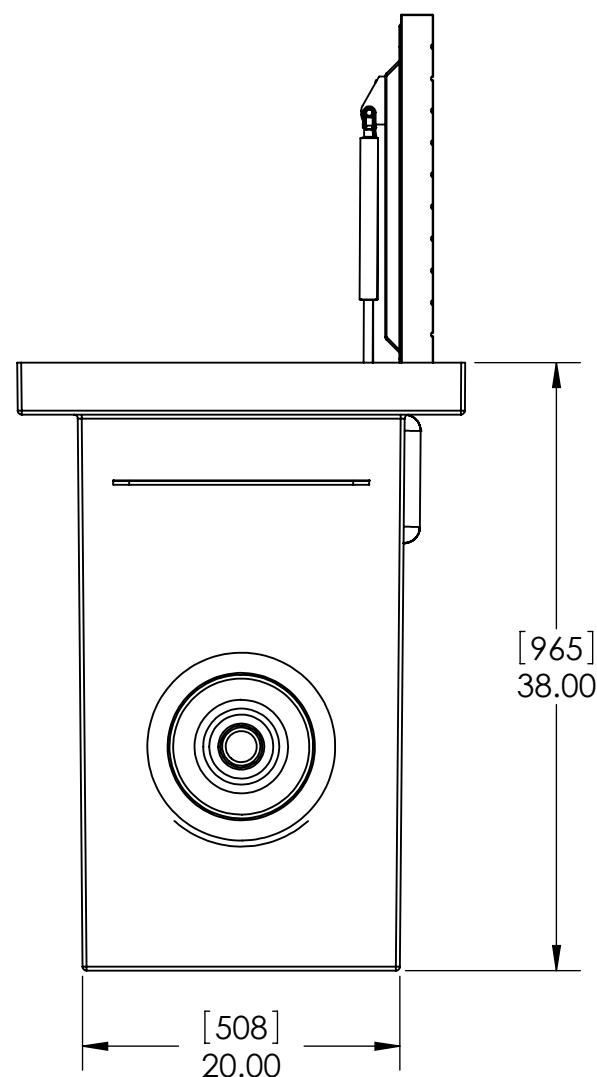
PLAN VIEW



FRONT CUT VIEW

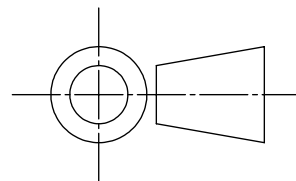


FRONT VIEW



SIDE VIEW

[MILLIMETERS]
INCHES



INTERNAL COMPONENTS SHOWN FOR REFERENCE.
NO INTERNAL COMPONENTS PROVIDED

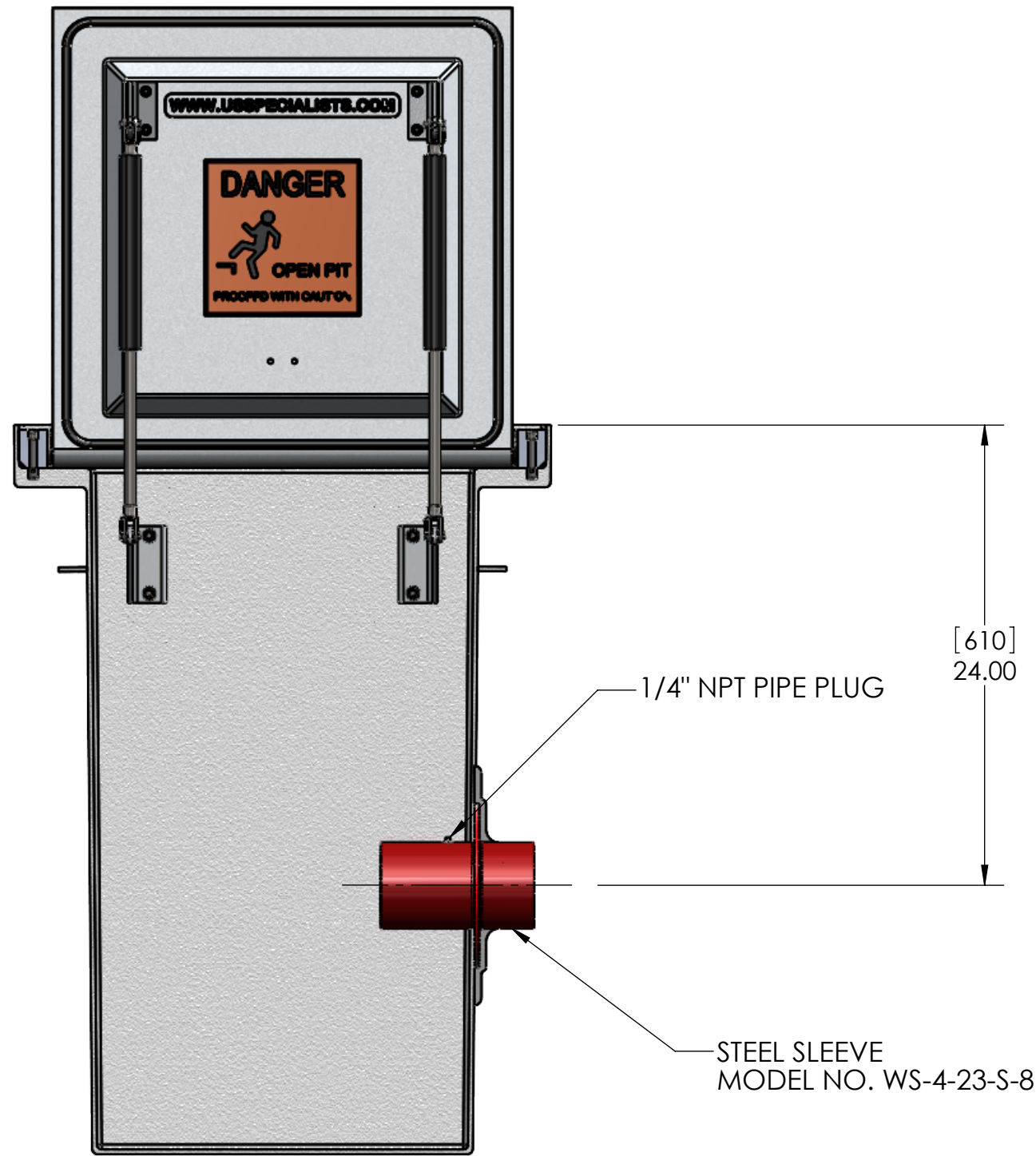


APPROVALS	DATE
DRAWN DLL	05-11-24
CHECKED DLL	05-11-24
APPROVED CDM	05-11-24
SHEET 1 OF 3	
SCALE: 1:12	SIZE: B

USS, LLC
PHONE: (260) 693-1172 FAX: (260) 693-1178
WEB SITE: WWW.USSPECIALISTS.COM

USS24-20x20-38D
LPDSA(2)[4]
3 VIEW, PLAN, CUT

THE INFORMATION ON THIS DRAWING IS PROPRIETARY AND IS NOT TO BE REVEALED TO THIRD PARTIES WITHOUT WRITTEN CONSENT OF A CORPORATE OFFICER OF USS, LLC.

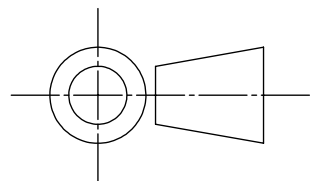


QUANTITY	_____
----------	-------

RELEASE FOR FABRICATION

NAME _____	SIGNATURE _____
DATE _____	COMPANY _____

[MILLIMETERS]
INCHES



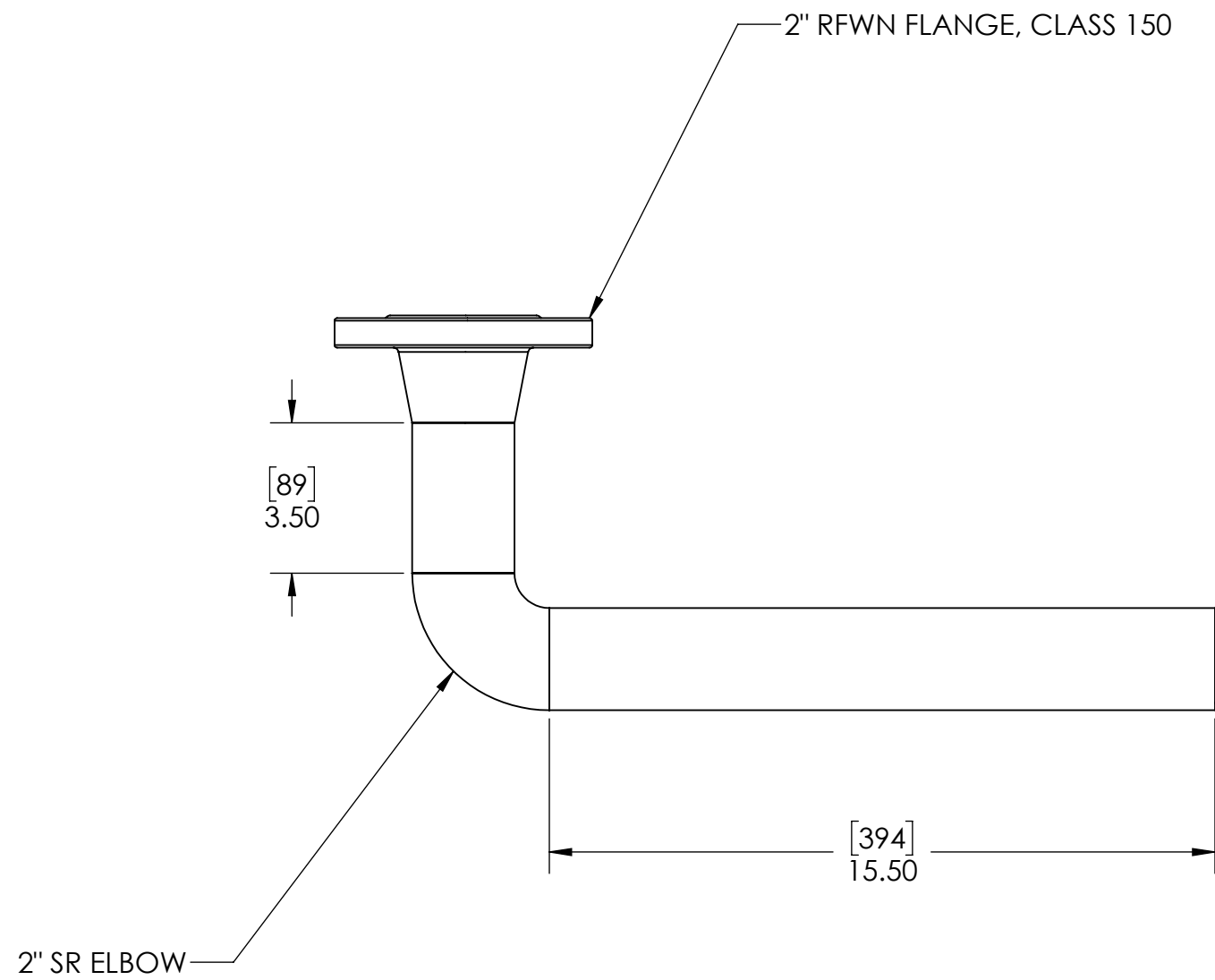
APPROVALS	DATE
DRAWN DLL	05-11-24
CHECKED DLL	05-11-24
APPROVED CDM	05-11-24
SHEET 2 OF 3	
SCALE: 1:8	SIZE: B

USS, LLC
PHONE: (260) 693-1172 FAX: (260) 693-1178
WEB SITE: WWW.USSPECIALISTS.COM

USS24-20x20-38D
LPDSA(2)[4]
SUBMITTAL

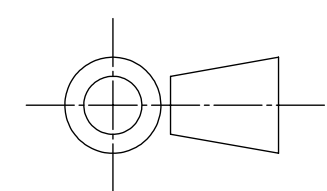
THE INFORMATION ON THIS DRAWING IS PROPRIETARY AND IS NOT TO BE REVEALED TO THIRD PARTIES WITHOUT WRITTEN CONSENT OF A CORPORATE OFFICER OF USS, LLC.


Utility Systems Specialists



STACK-UP COMPONENTS SHOWN TO SCALE. HOWEVER, CONTRACTOR SHOULD PROTOTYPE AND FIELD TEST FIRST ARTICLE BEFORE FABRICATING REMAINING STACK-UPS.

[MILLIMETERS]
INCHES



 Utility Systems Specialists	APPROVALS	DATE	USS, LLC PHONE: (260) 693-1172 FAX: (260) 693-1178 WEB SITE: WWW.USSPECIALISTS.COM
	DRAWN DLL	05-11-24	
	CHECKED DLL	05-11-24	USS24-20x20-38D
	APPROVED CDM	05-11-24	LPDSA(2)[4]
SHEET 3 OF 3		STACK-UP	
SCALE: 1:4	SIZE: B	<small>THE INFORMATION ON THIS DRAWING IS PROPRIETARY AND IS NOT TO BE REVEALED TO THIRD PARTIES WITHOUT WRITTEN CONSENT OF A CORPORATE OFFICER OF USS, LLC.</small>	