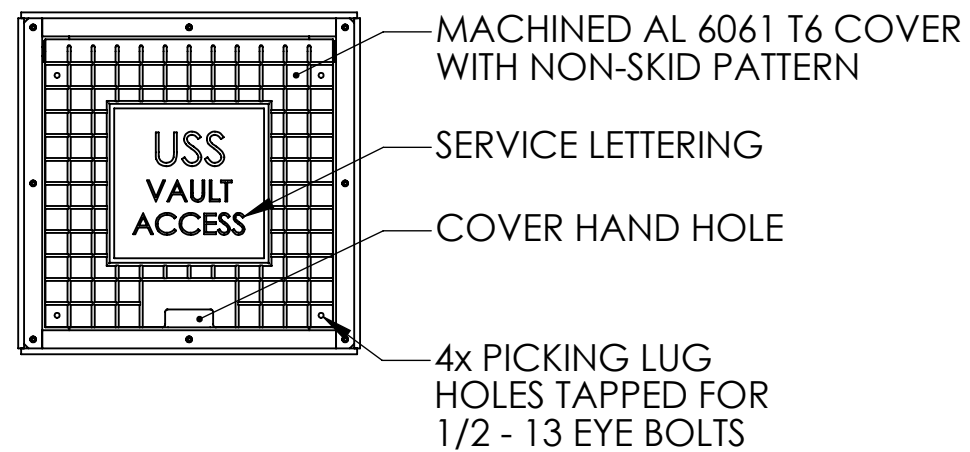
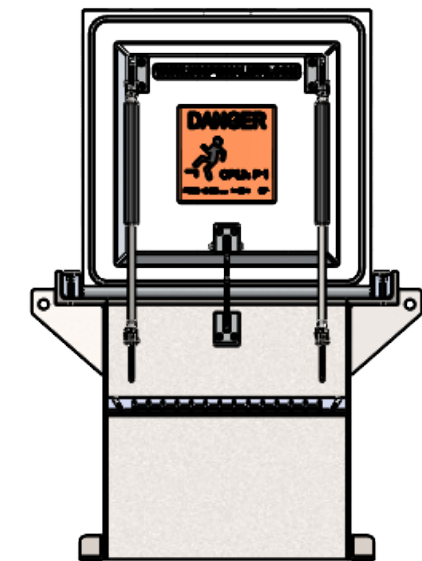


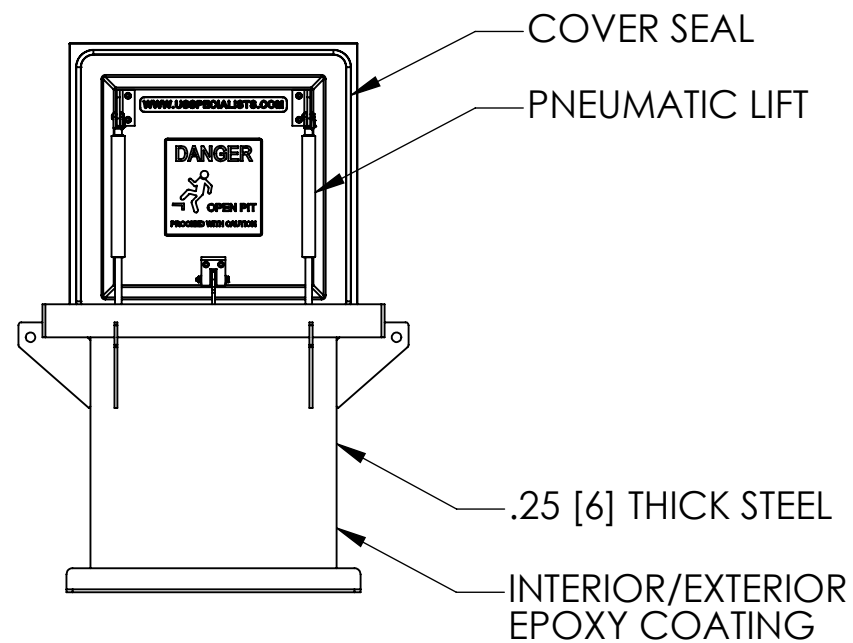
TOP VIEW



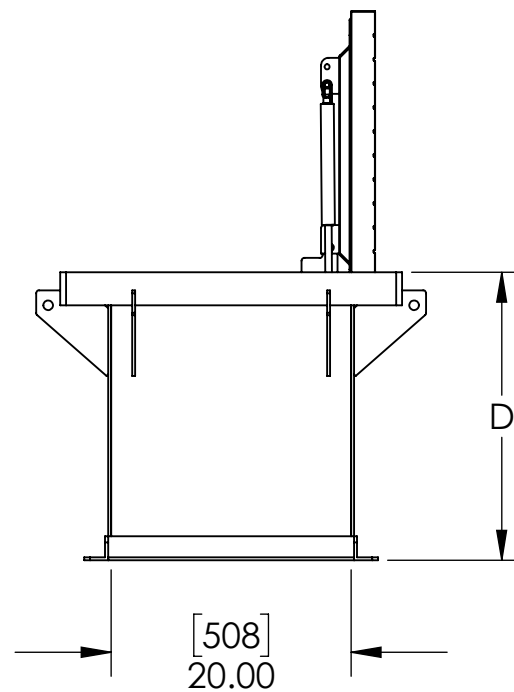
PLAN VIEW



FRONT CUT VIEW



FRONT VIEW



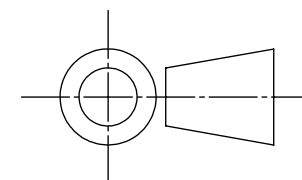
SIDE VIEW

STANDARD DEPTHS "D"

| IN | MM   | WT (LB) | WT (KG) |
|----|------|---------|---------|
| 12 | 305  | 362     | 164     |
| 18 | 457  | 393     | 178     |
| 24 | 610  | 431     | 195     |
| 36 | 914  | 501     | 227     |
| 48 | 1219 | 570     | 259     |

OTHER DEPTHS AVAILABLE UPON REQUEST

[MILLIMETERS]  
INCHES

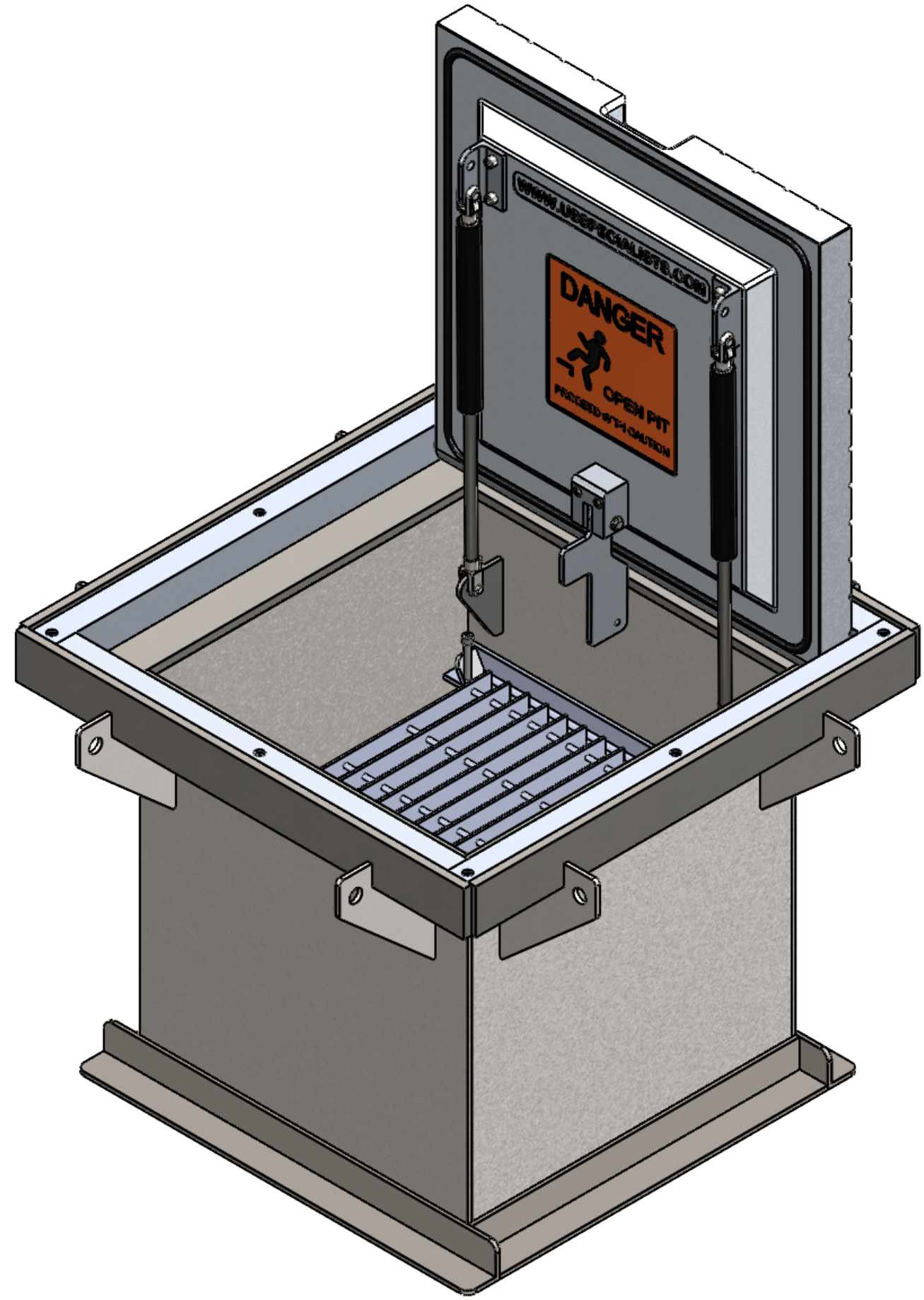


| APPROVALS       | DATE     |
|-----------------|----------|
| DRAWN<br>DLL    | 12-30-24 |
| CHECKED<br>DLL  | 12-30-24 |
| APPROVED<br>CDM | 12-30-24 |
| SHEET 1 OF 2    |          |
| SCALE: 1:30     | SIZE: B  |

**USS, LLC**  
PHONE: (260) 693-1172 FAX: (260) 693-1178  
WEB SITE: WWW.USSPECIALISTS.COM

**USS24**  
**20x20-VA(SD,HO)-Steel**  
**3 VIEW, CUT, PLAN**

THE INFORMATION ON THIS DRAWING IS PROPRIETARY AND IS NOT TO BE REVEALED TO THIRD PARTIES WITHOUT WRITTEN CONSENT OF A CORPORATE OFFICER OF USS, LLC.

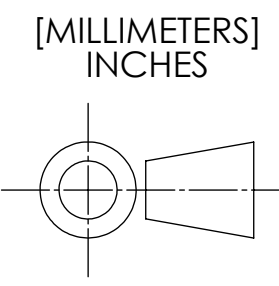


QUANTITY: \_\_\_\_\_

**RELEASE FOR FABRICATION**

\_\_\_\_\_  
 NAME SIGNATURE

\_\_\_\_\_  
 DATE COMPANY



| APPROVALS       | DATE     |
|-----------------|----------|
| DRAWN<br>DLL    | 12-30-24 |
| CHECKED<br>DLL  | 12-30-24 |
| APPROVED<br>CDM | 12-30-24 |
| SHEET 2 OF 2    |          |
| SCALE: 1:6      | SIZE: B  |

**USS, LLC**  
 PHONE: (260) 693-1172 FAX: (260) 693-1178  
 WEB SITE: WWW.USSPECIALISTS.COM

**USS24**  
**20x20-VA(SD,HO)-Steel**  
**SUBMITTAL**

THE INFORMATION ON THIS DRAWING IS PROPRIETARY AND IS NOT TO BE REVEALED TO THIRD PARTIES WITHOUT WRITTEN CONSENT OF A CORPORATE OFFICER OF USS, LLC.