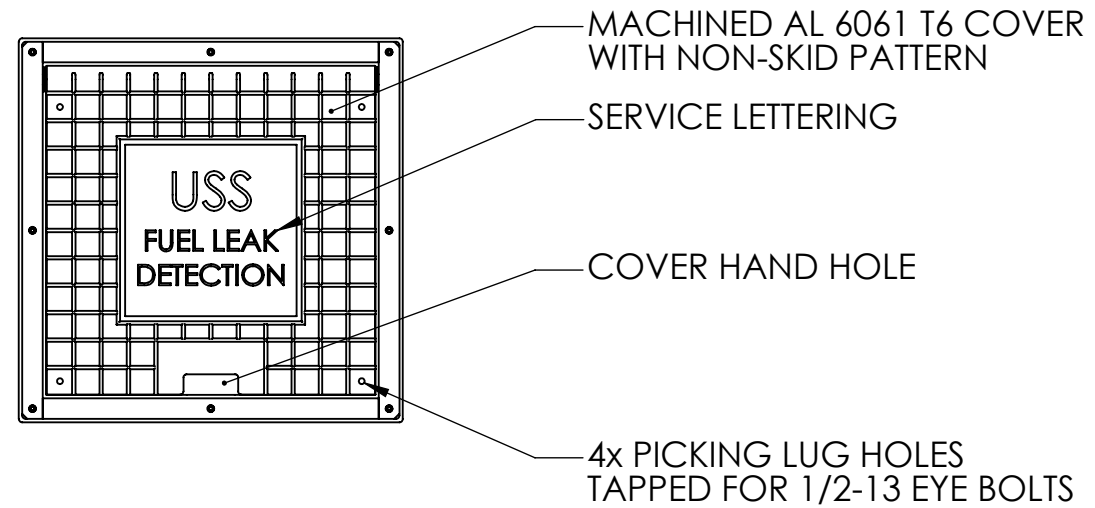
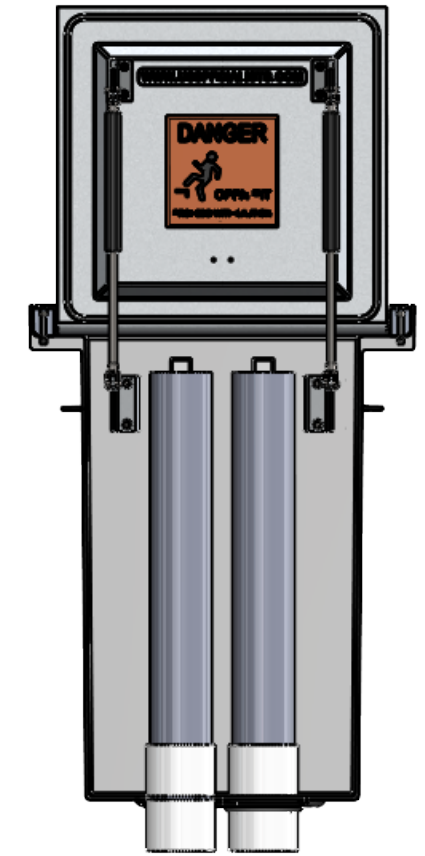


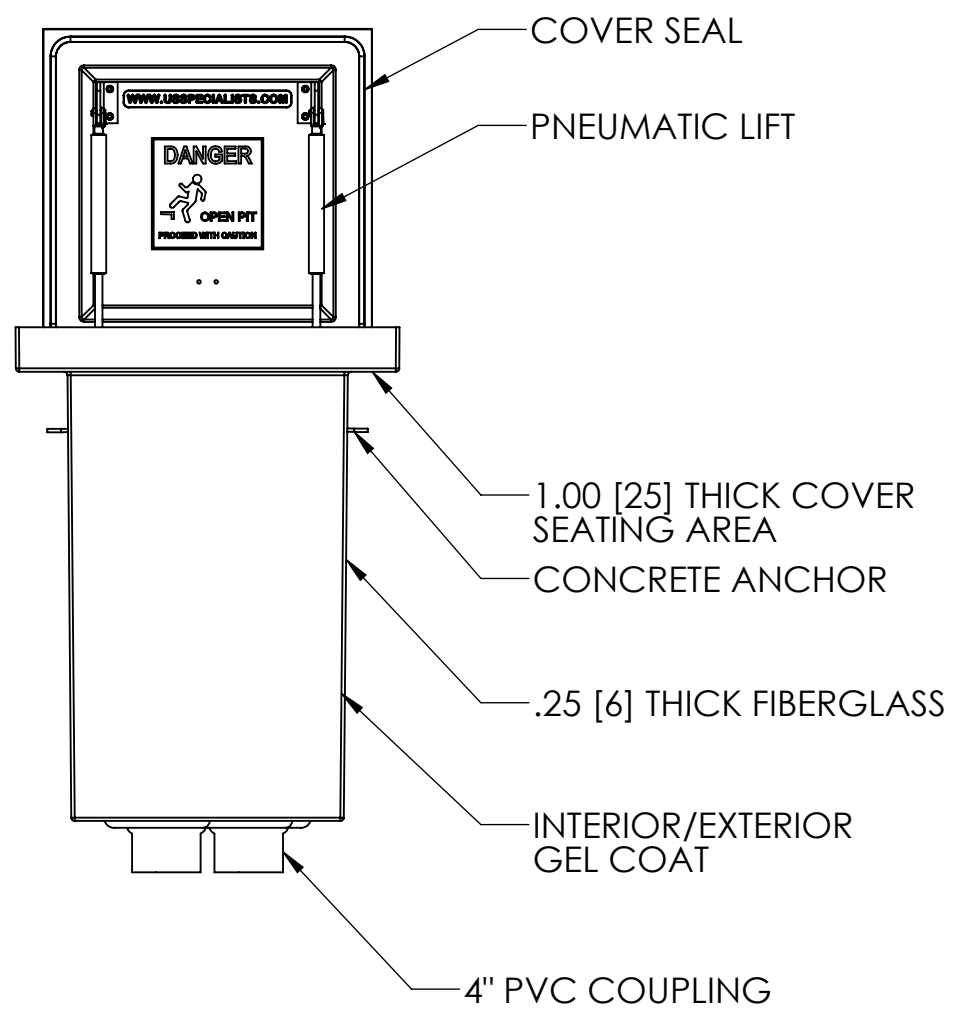
TOP VIEW



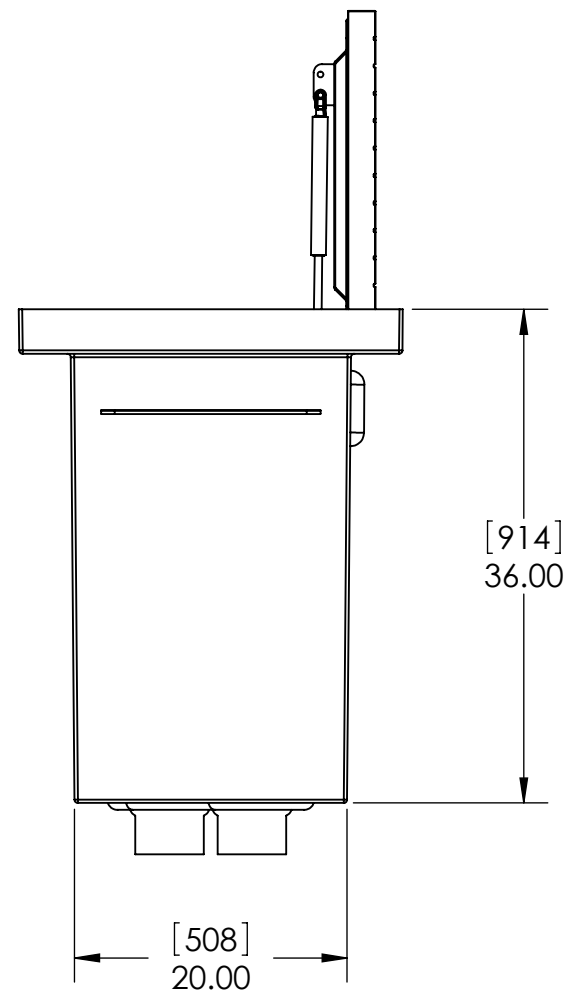
PLAN VIEW



FRONT CUT VIEW



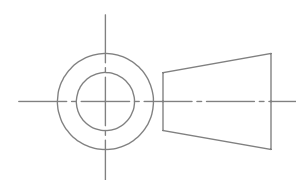
FRONT VIEW



SIDE VIEW

INTERNAL COMPONENTS SHOWN FOR REFERENCE. NO INTERNAL COMPONENTS PROVIDED

[MILLIMETERS]
INCHES

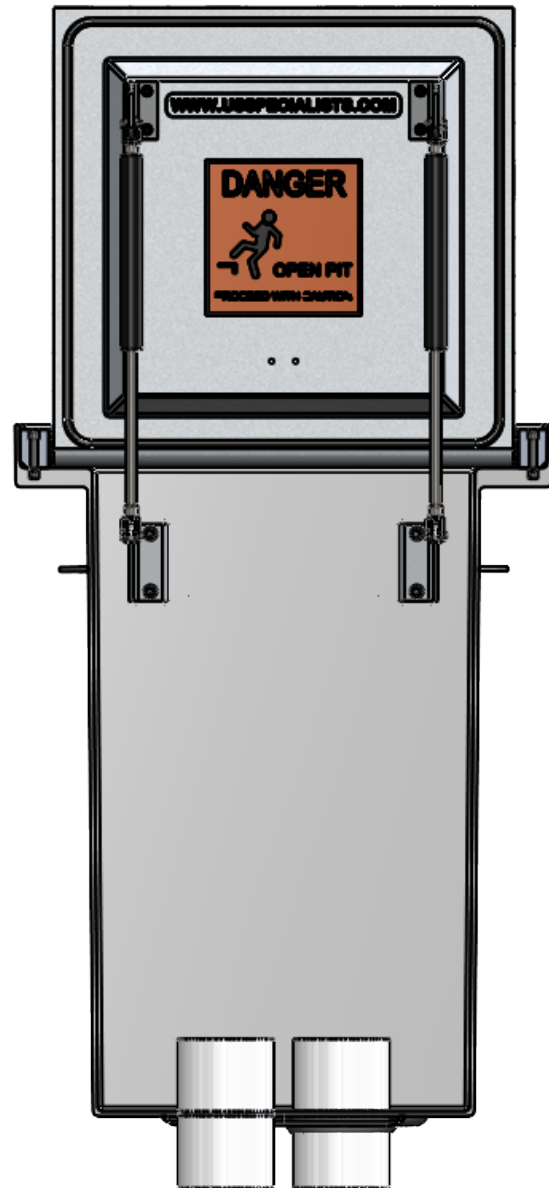


APPROVALS	DATE
DRAWN DLL	08-05-24
CHECKED DLL	08-05-24
APPROVED CDM	08-05-24
SHEET 1 OF 2	
SCALE: 1:14	SIZE: B

USS, LLC
 PHONE: (260) 693-1172 FAX: (260) 693-1178
 WEB SITE: WWW.USSPECIALISTS.COM

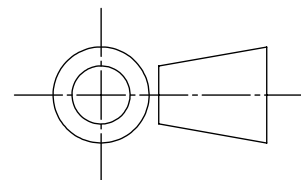
USS24-20x20-36D
(2)LD(4)
3-VIEW, CUT, PLAN

THE INFORMATION ON THIS DRAWING IS PROPRIETARY AND IS NOT TO BE REVEALED TO THIRD PARTIES WITHOUT WRITTEN CONSENT OF A CORPORATE OFFICER OF USS, LLC.



EMPTY PIT: 284 LB [129 KG]

[MILLIMETERS]
INCHES



QUANTITY _____

RELEASE FOR FABRICATION

NAME SIGNATURE

DATE COMPANY

APPROVALS	DATE	USS, LLC PHONE: (260) 693-1172 FAX: (260) 693-1178 WEB SITE: WWW.USSPECIALISTS.COM
DRAWN		
CHECKED		
APPROVED		
DLL	08-05-24	USS24-20x20-36D (2)LD(4)
DLL	08-05-24	
CDM	08-05-24	SUBMITTAL
SHEET 2 OF 2		
SCALE: 1:10	SIZE: B	<small>THE INFORMATION ON THIS DRAWING IS PROPRIETARY AND IS NOT TO BE REVEALED TO THIRD PARTIES WITHOUT WRITTEN CONSENT OF A CORPORATE OFFICER OF USS, INC.</small>