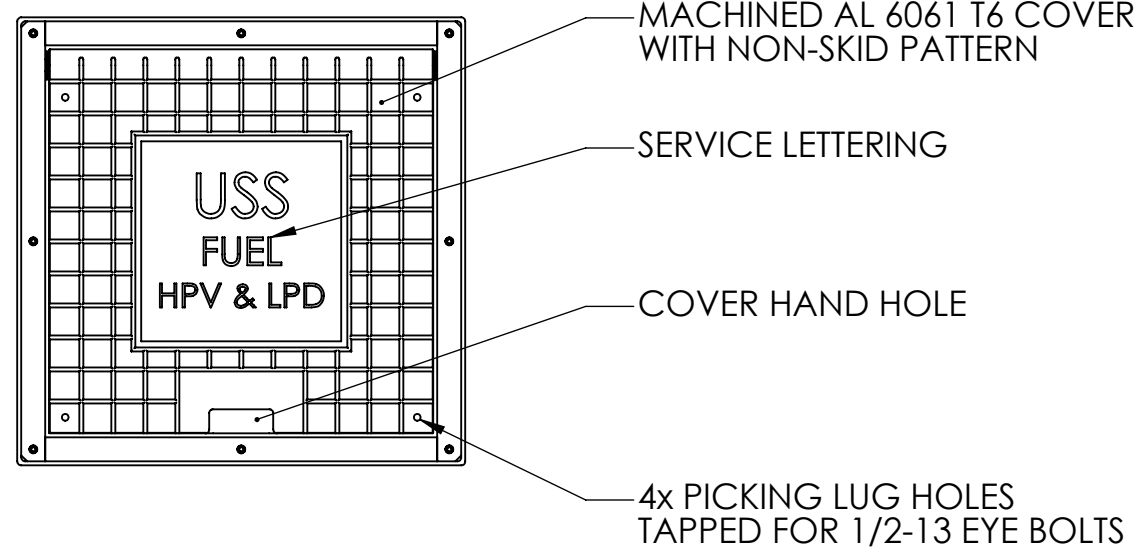
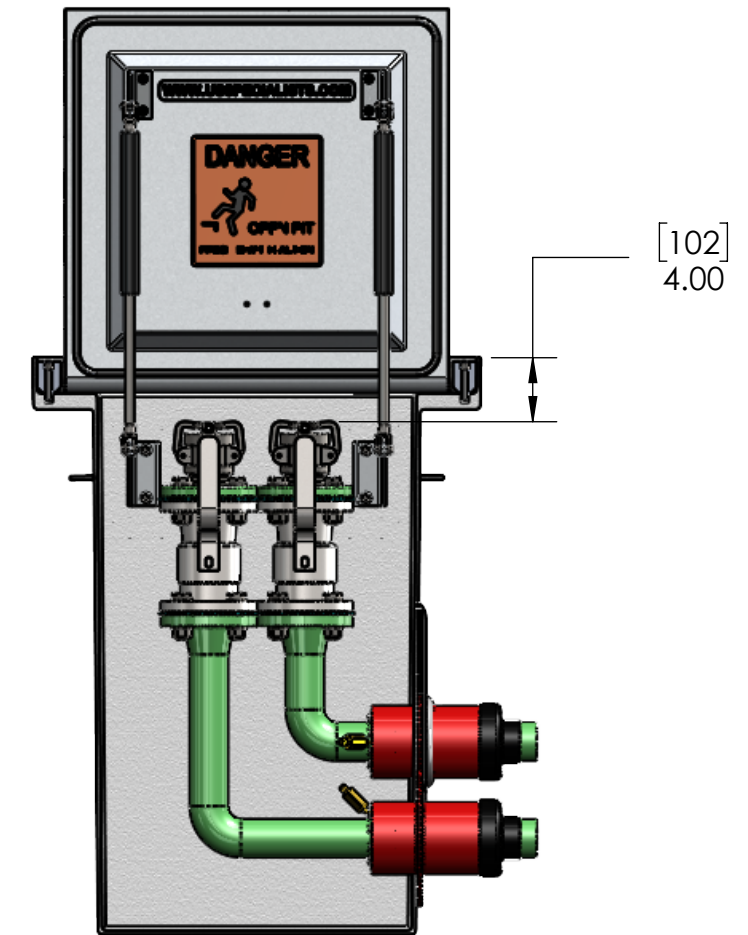


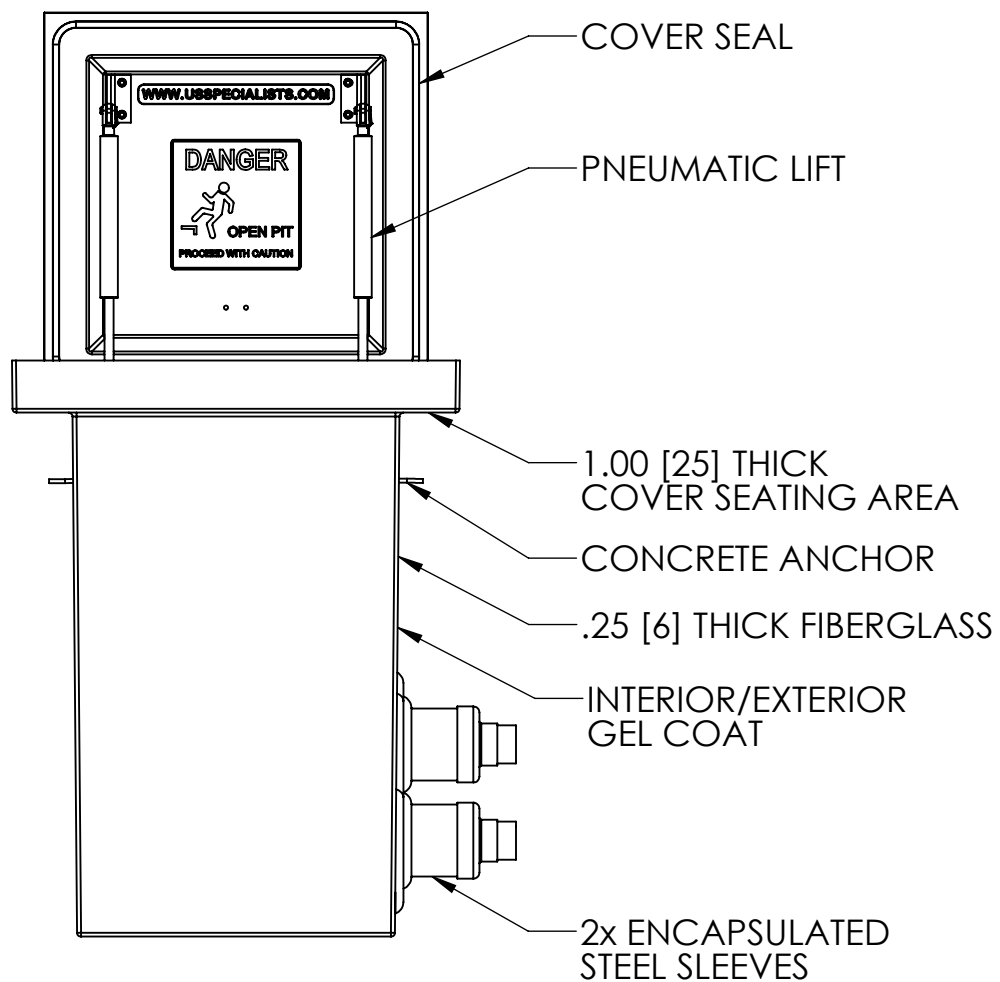
TOP VIEW



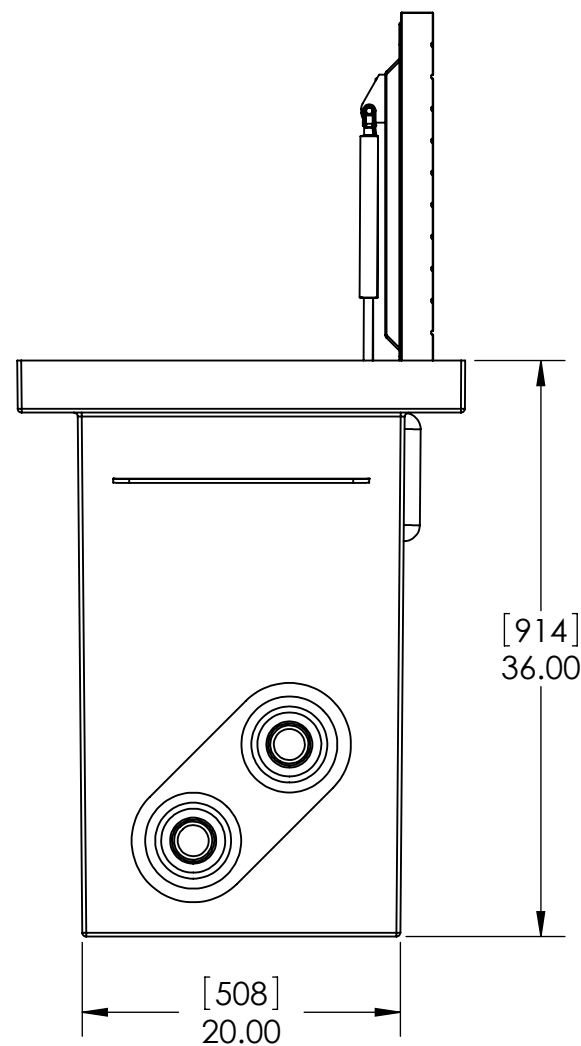
PLAN VIEW



FRONT CUT VIEW

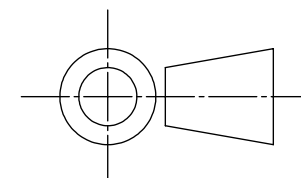


FRONT VIEW



SIDE VIEW

[MILLIMETERS]
INCHES



INTERNAL COMPONENTS SHOWN FOR REFERENCE.
NO INTERNAL COMPONENTS PROVIDED

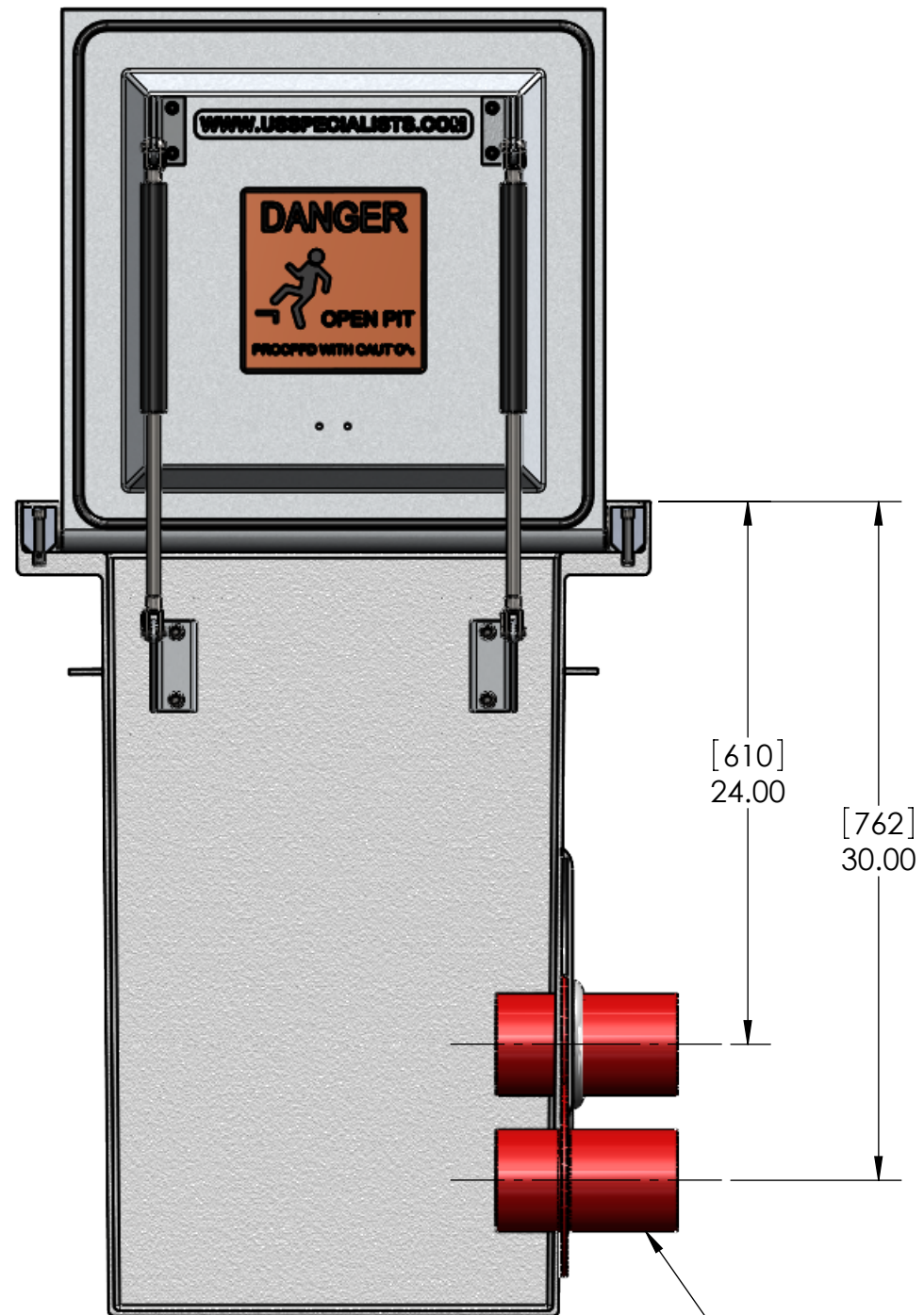


APPROVALS	DATE
DRAWN DLL	09-09-24
CHECKED DLL	09-09-24
APPROVED CDM	09-09-24
SHEET 1 OF 3	
SCALE: 1:12	SIZE: B

USS, LLC
 PHONE: (260) 693-1172 FAX: (260) 693-1178
 WEB SITE: WWW.USSPECIALISTS.COM

USS24-20x20-36D
HPV&LPD(SE)(2)[4](TP)
3 VIEW, PLAN, CUT

THE INFORMATION ON THIS DRAWING IS PROPRIETARY AND IS NOT TO BE REVEALED TO THIRD PARTIES WITHOUT WRITTEN CONSENT OF A CORPORATE OFFICER OF USS, LLC.



2x STEEL SLEEVES
MODEL NO. WS-4-23-S-8

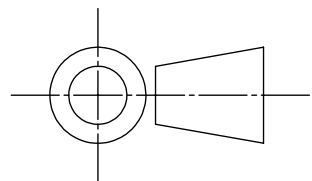
QUANTITY _____

RELEASE FOR FABRICATION

NAME SIGNATURE

DATE COMPANY

[MILLIMETERS]
INCHES



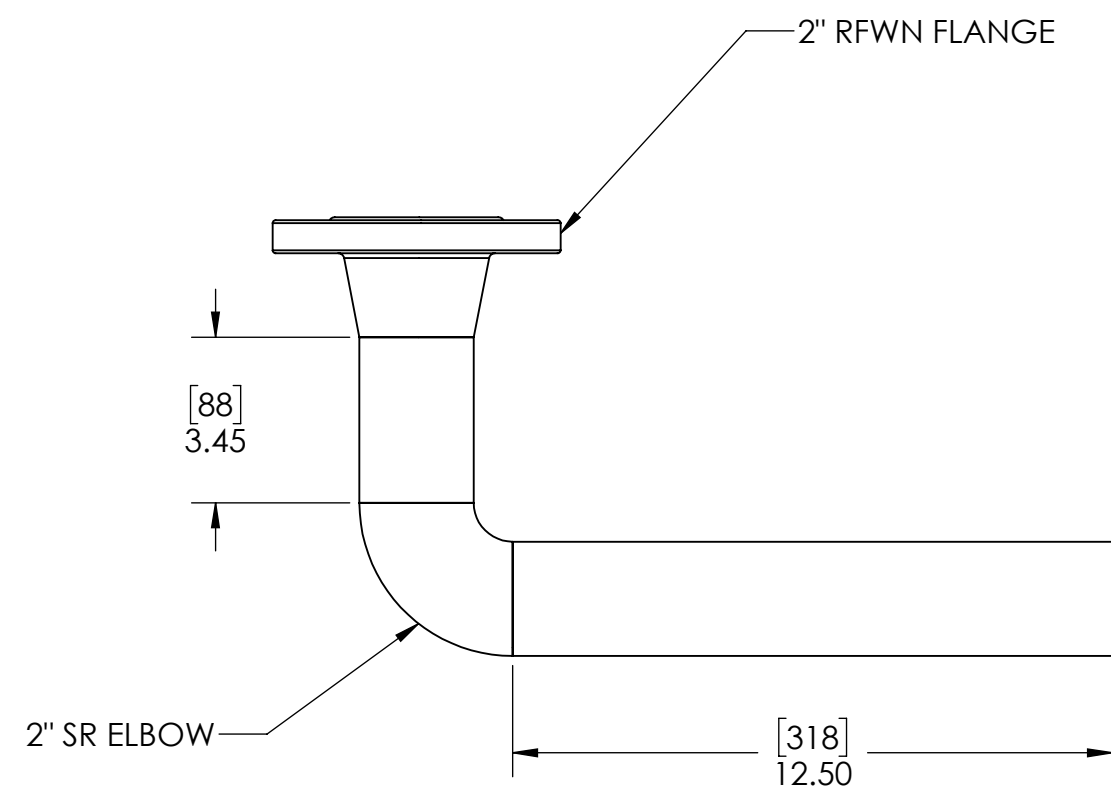
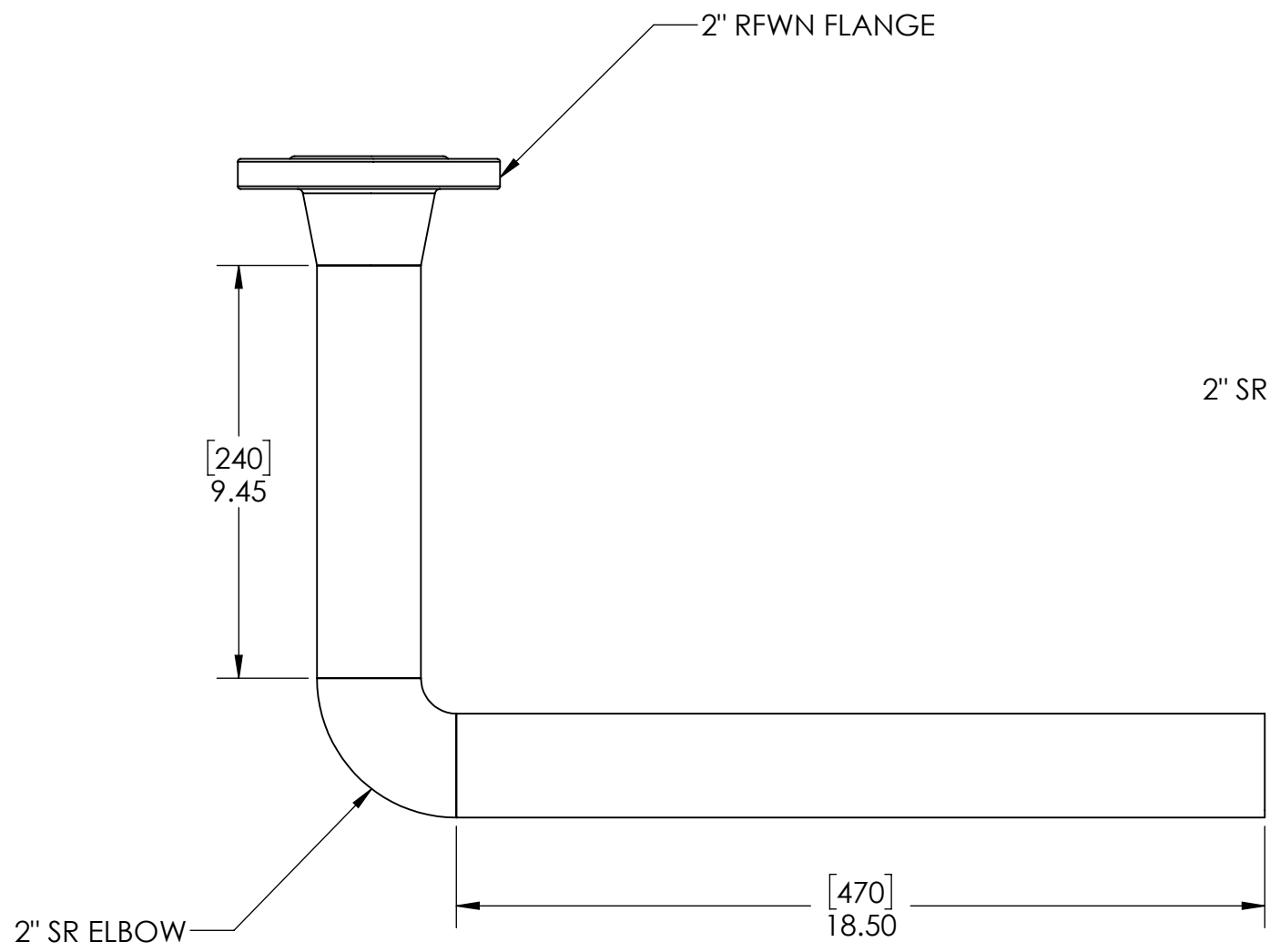
APPROVALS	DATE
DRAWN DLL	09-09-24
CHECKED DLL	09-09-24
APPROVED CDM	09-09-24
SHEET 2 OF 3	
SCALE: 1:8	SIZE: B

USS, LLC
PHONE: (260) 693-1172 FAX: (260) 693-1178
WEB SITE: WWW.USSPECIALISTS.COM

USS24-20x20-36D
HPV&LPD(SE)(2)[4](TP)
SUBMITTAL

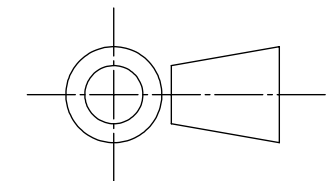
THE INFORMATION ON THIS DRAWING IS PROPRIETARY AND IS NOT TO BE REVEALED TO THIRD PARTIES WITHOUT WRITTEN CONSENT OF A CORPORATE OFFICER OF USS, LLC.

EMPTY PIT: 301 LB [137 KG]



STACK-UP COMPONENTS SHOWN TO SCALE. HOWEVER, CONTRACTOR SHOULD PROTOTYPE AND FIELD TEST FIRST ARTICLE BEFORE FABRICATING REMAINING STACK-UPS.

[MILLIMETERS]
INCHES



APPROVALS	DATE
DRAWN DLL	09-09-24
CHECKED DLL	09-09-24
APPROVED CDM	09-09-24
SHEET 3 OF 3	
SCALE: 1:12	SIZE: B

USS, LLC
 PHONE: (260) 693-1172 FAX: (260) 693-1178
 WEB SITE: WWW.USSPECIALISTS.COM

USS24-20x20-36D
HPV&LPD(SE)(2)[4](TP)
STACK-UP

THE INFORMATION ON THIS DRAWING IS PROPRIETARY AND IS NOT TO BE REVEALED TO THIRD PARTIES WITHOUT WRITTEN CONSENT OF A CORPORATE OFFICER OF USS, LLC.