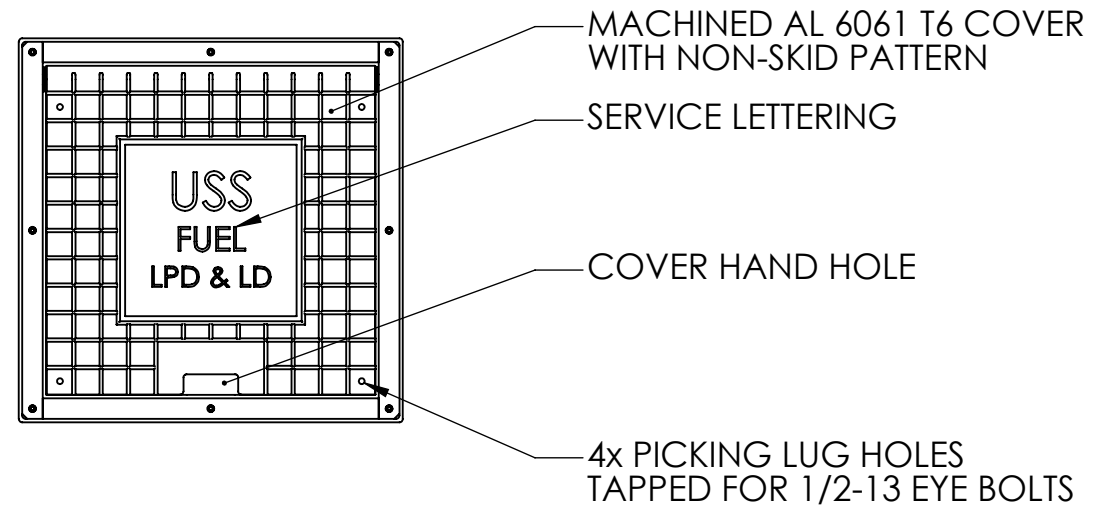
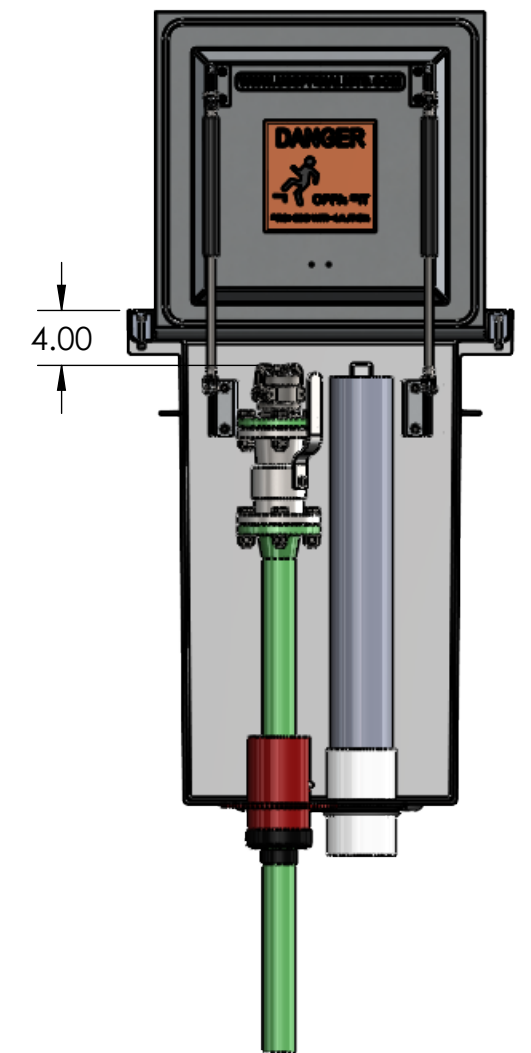


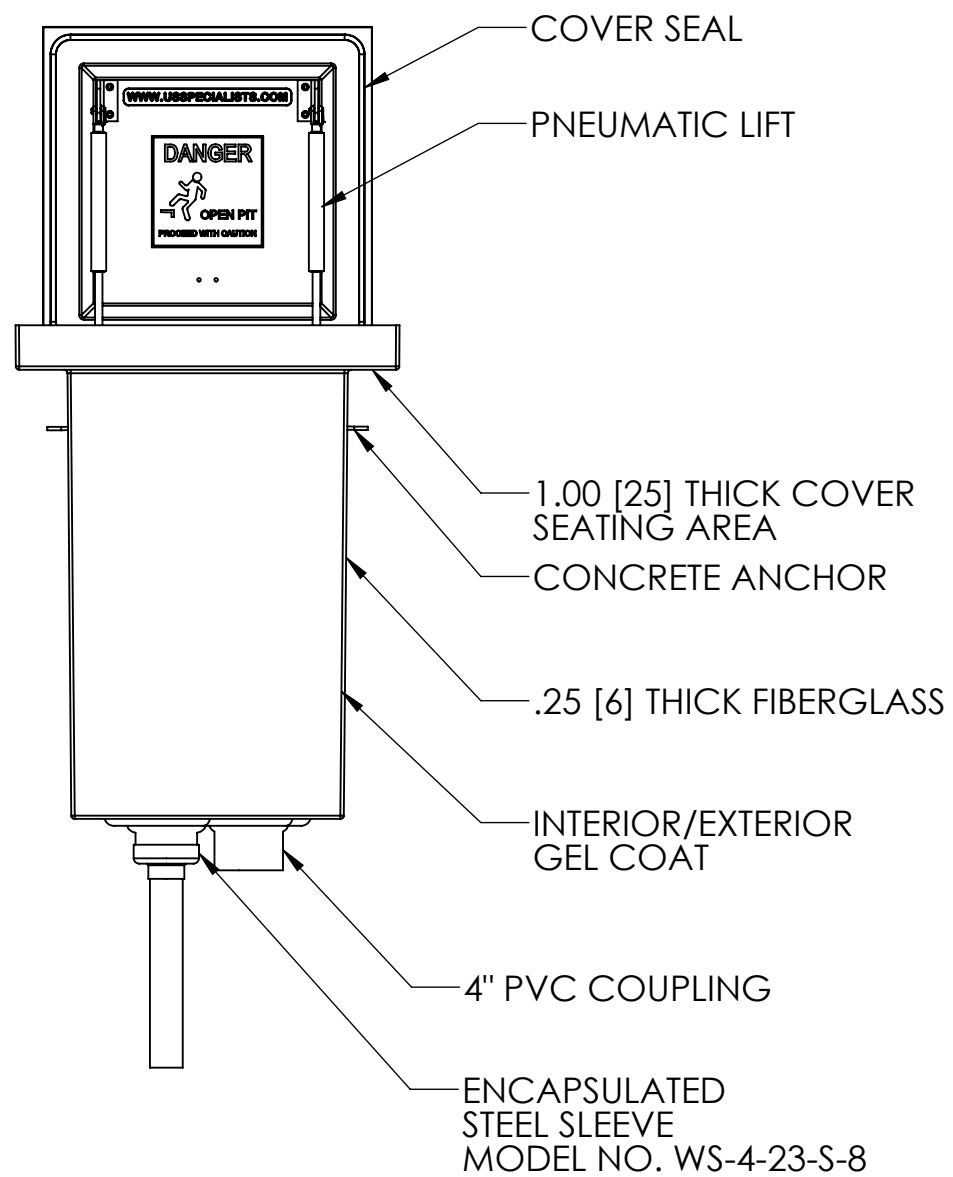
TOP VIEW



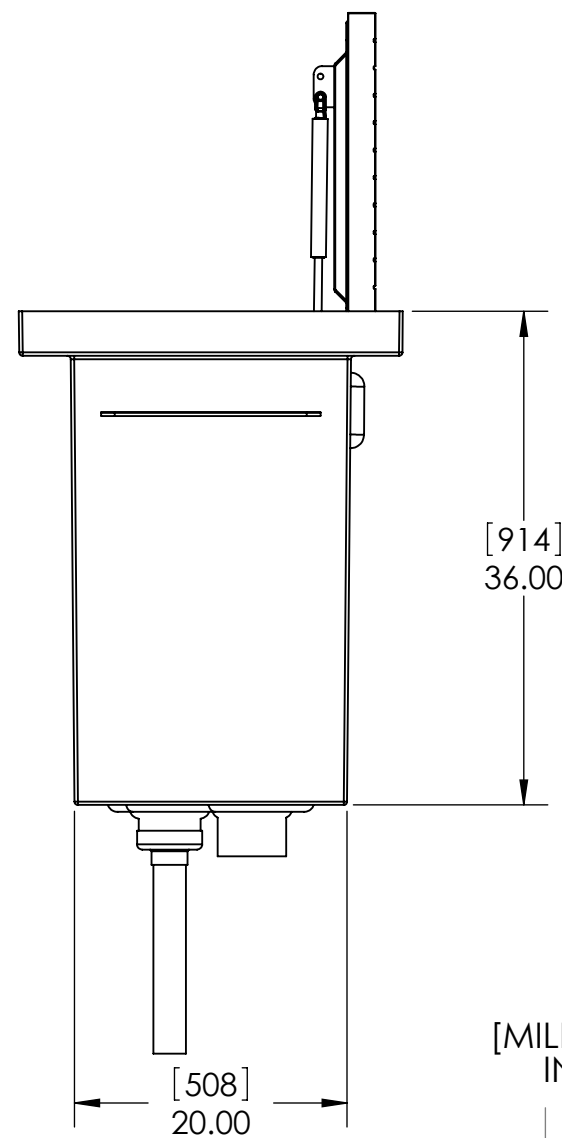
PLAN VIEW



FRONT CUT VIEW

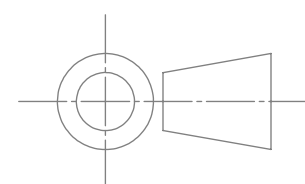


FRONT VIEW



SIDE VIEW

[MILLIMETERS]  
INCHES



INTERNAL COMPONENTS SHOWN FOR REFERENCE. NO INTERNAL COMPONENTS PROVIDED

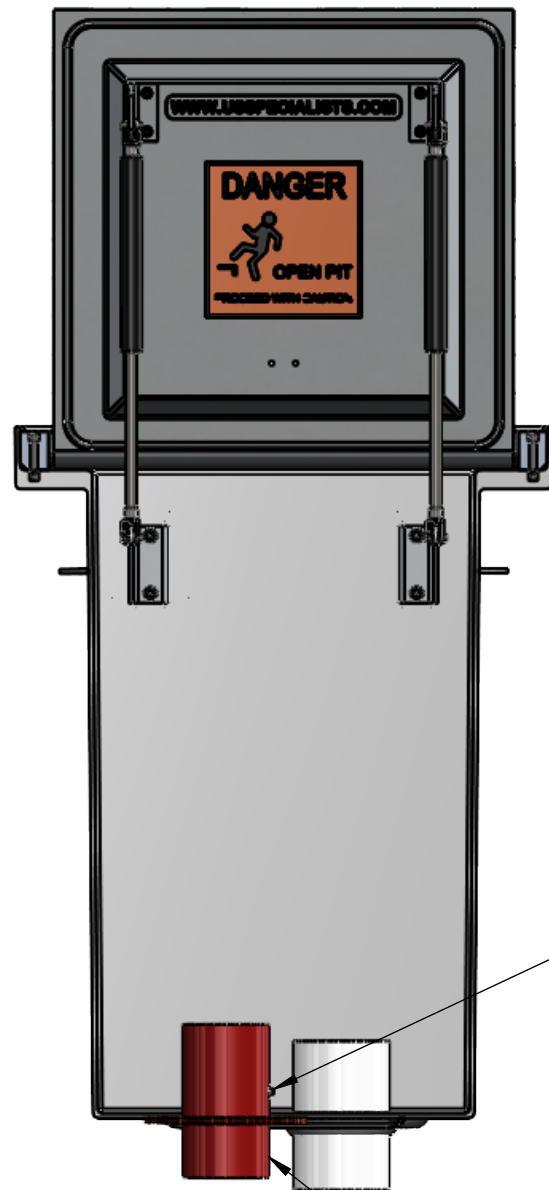


APPROVALS	DATE
DRAWN DLL	08-15-24
CHECKED DLL	08-15-24
APPROVED CDM	08-15-24
SHEET 1 OF 3	
SCALE: 1:14	SIZE: B

**USS, LLC**  
 PHONE: (260) 693-1172 FAX: (260) 693-1178  
 WEB SITE: WWW.USSPECIALISTS.COM

**USS24-20x20-36D**  
**LPDBE(2)[4]&LD[4]**  
**3-VIEW, CUT, PLAN**

THE INFORMATION ON THIS DRAWING IS PROPRIETARY AND IS NOT TO BE REVEALED TO THIRD PARTIES WITHOUT WRITTEN CONSENT OF A CORPORATE OFFICER OF USS, LLC.

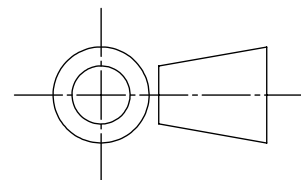


1/4" NPT PLUG  
FOR PRESSURE TESTING

STEEL SLEEVE  
MODEL NO. WS-4-23-S-8

EMPTY PIT: 291 LB [132 KG]

[MILLIMETERS]  
INCHES



QUANTITY \_\_\_\_\_

**RELEASE FOR FABRICATION**

NAME \_\_\_\_\_ SIGNATURE \_\_\_\_\_

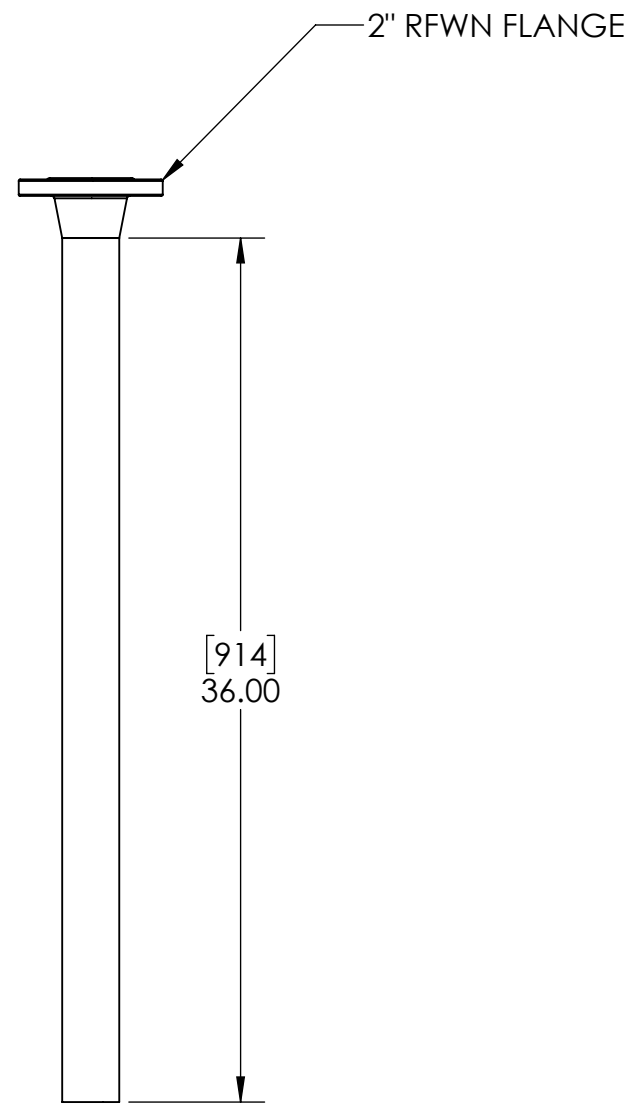
DATE \_\_\_\_\_ COMPANY \_\_\_\_\_

APPROVALS	DATE
DRAWN DLL	08-15-24
CHECKED DLL	08-15-24
APPROVED CDM	08-15-24
SHEET 2 OF 3	
SCALE: 1:10	SIZE: B

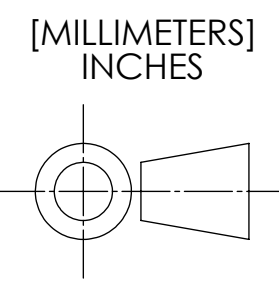
**USS, LLC**  
PHONE: (260) 693-1172 FAX: (260) 693-1178  
WEB SITE: WWW.USSPECIALISTS.COM

**USS24-20x20-36D**  
**LPDBE(2)[4]&LD[4]**  
**SUBMITTAL**

THE INFORMATION ON THIS DRAWING IS PROPRIETARY AND IS NOT TO BE REVEALED TO THIRD PARTIES WITHOUT WRITTEN CONSENT OF A CORPORATE OFFICER OF USS, INC.



STACK-UP COMPONENTS SHOWN TO SCALE. HOWEVER, CONTRACTOR SHOULD PROTOTYPE AND FIELD TEST FIRST ARTICLE BEFORE FABRICATING REMAINING STACK-UPS.



APPROVALS	DATE
DRAWN DLL	08-15-24
CHECKED DLL	08-15-24
APPROVED CDM	08-15-24
SHEET 3 OF 3	
SCALE: 1:8	SIZE: B

**USS, LLC**  
 PHONE: (260) 693-1172 FAX: (260) 693-1178  
 WEB SITE: WWW.USSPECIALISTS.COM

**USS24-20x20-36D**  
**LPDBE(2)[4]&LD[4]**  
**STACK-UP**

THE INFORMATION ON THIS DRAWING IS PROPRIETARY AND IS NOT TO BE REVEALED TO THIRD PARTIES WITHOUT WRITTEN CONSENT OF A CORPORATE OFFICER OF USS, LLC.