

INTERNAL COMPONENTS SHOWN FOR REFERENCE.
NO INTERNAL COMPONENTS PROVIDED.

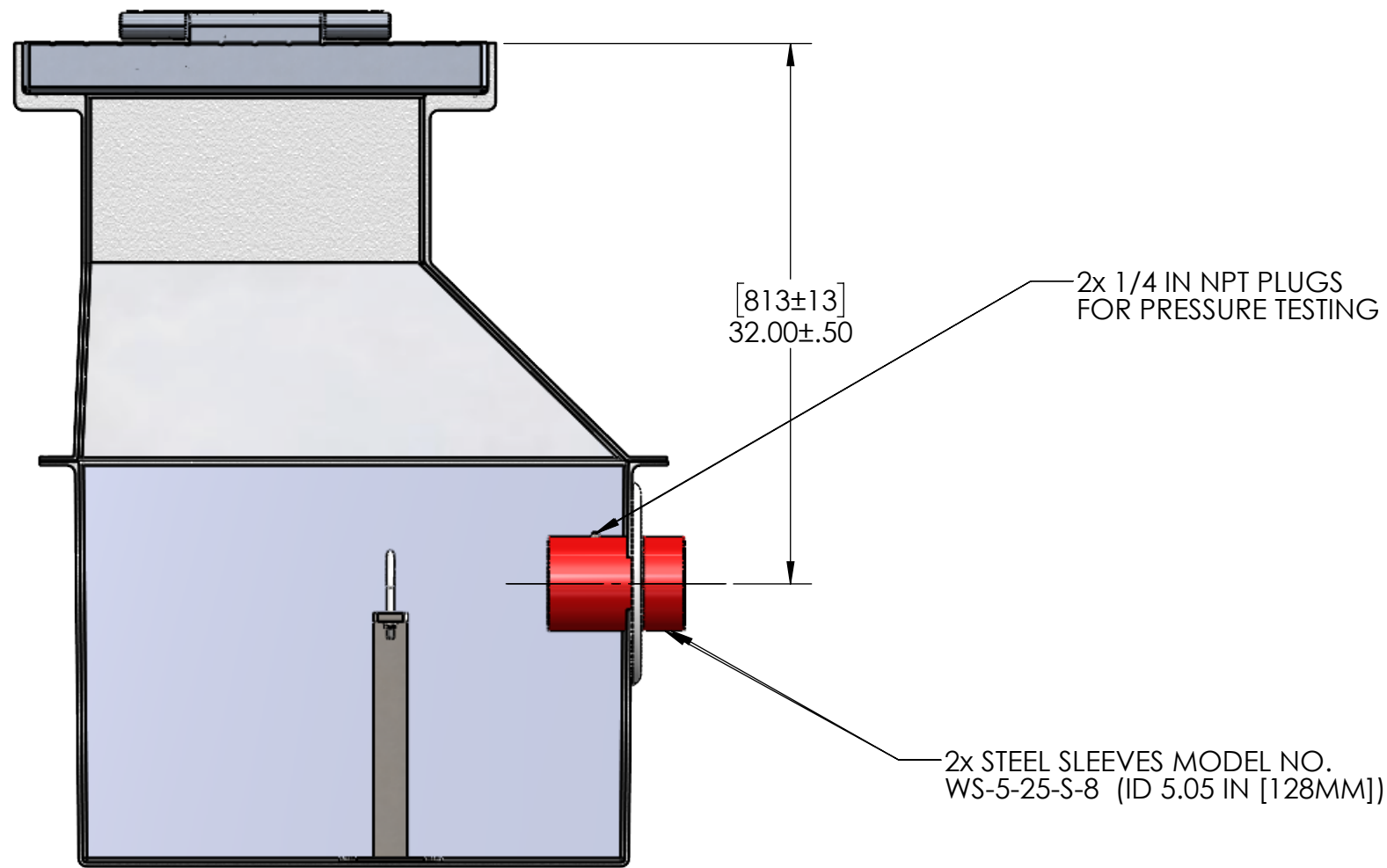


APPROVALS	DATE
DRAWN DLL	06-28-24
CHECKED DLL	06-28-24
APPROVED CDM	06-28-24
SHEET 1 OF 7	
SCALE: 1:14	SIZE: B

USS, LLC
PHONE: (260) 693-1172 FAX: (260) 693-1178
WEB SITE: WWW.USSPECIALISTS.COM

USS27.5(14)-20x20-20x32-48.75D
(2)HPV(3x2)[5]
3 VIEW, PLAN, CUT

THE INFORMATION ON THIS DRAWING IS PROPRIETARY AND IS NOT TO BE REVEALED TO THIRD PARTIES WITHOUT WRITTEN CONSENT OF A CORPORATE OFFICER OF USS, LLC.



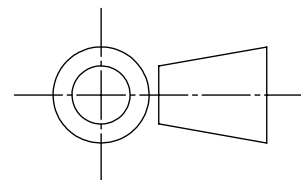
QUANTITY	_____
----------	-------

RELEASE FOR FABRICATION

NAME _____	SIGNATURE _____
DATE _____	COMPANY _____

EMPTY PIT: 397 LB [180 KG]

[MILLIMETERS]
INCHES

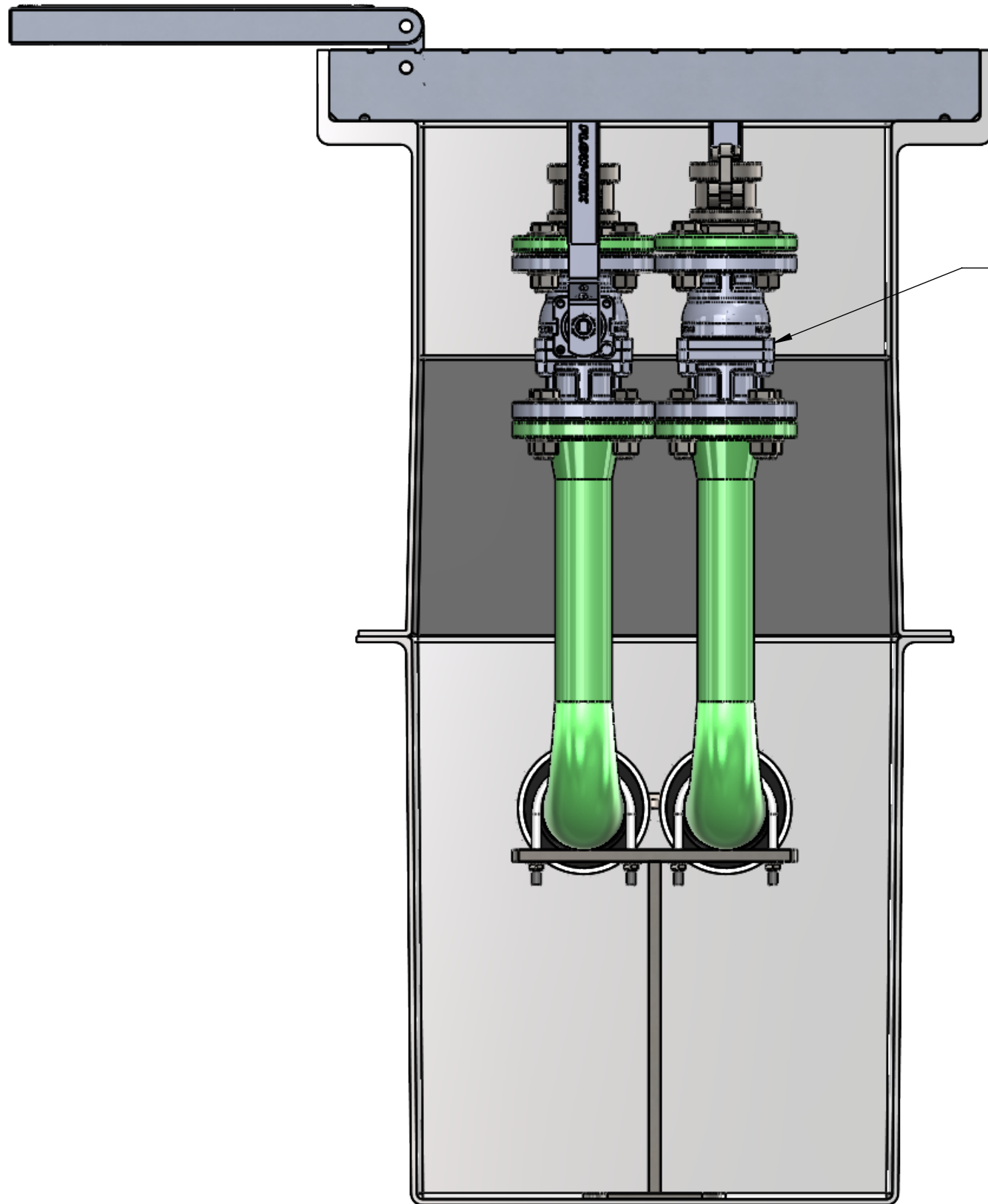


APPROVALS	DATE
DRAWN DLL	06-28-24
CHECKED DLL	06-28-24
APPROVED CDM	06-28-24
SHEET 2 OF 7	
SCALE: 1:10	SIZE: B

USS, LLC
PHONE: (260) 693-1172 FAX: (260) 693-1178
WEB SITE: WWW.USSPECIALISTS.COM

USS27.5(14)-20x20-20x32-48.75D
(2)HPV(3x2)[5]
SUBMITTAL

THE INFORMATION ON THIS DRAWING IS PROPRIETARY AND IS NOT TO BE REVEALED TO THIRD PARTIES WITHOUT WRITTEN CONSENT OF A CORPORATE OFFICER OF USS, LLC.



2" BALL VALVE, BRAY FLOTEK
F-15 SERIES STAINLESS STEEL.

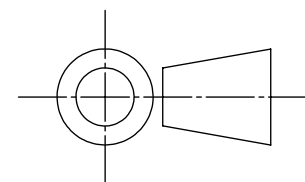
INTERNAL COMPONENTS SHOWN FOR REFERENCE.
NO INTERNAL COMPONENTS PROVIDED.

RELEASE FOR FABRICATION

NAME _____ SIGNATURE _____

DATE _____ COMPANY _____

[MILLIMETERS]
INCHES

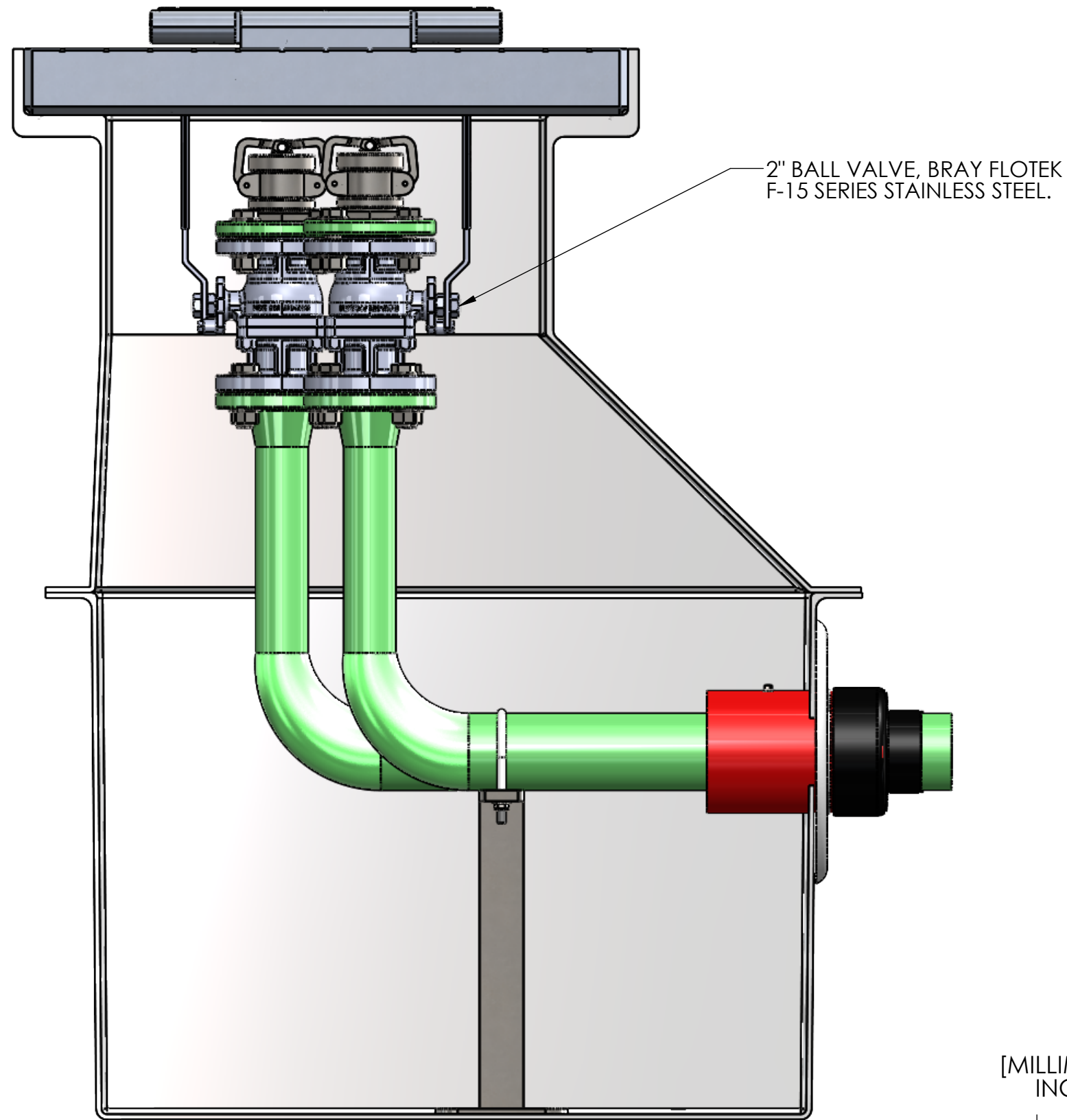


APPROVALS	DATE
DRAWN DLL	06-28-24
CHECKED DLL	06-28-24
APPROVED CDM	06-28-24
SHEET 3 OF 7	

USS, LLC
PHONE: (260) 693-1172 FAX: (260) 693-1178
WEB SITE: WWW.USSPECIALISTS.COM
USS27.5(14)-20x20-20x32-48.75D
(2)HPV(3x2)[5]
SIDE CUT VIEW

SCALE: 1:6 SIZE: B

THE INFORMATION ON THIS DRAWING IS PROPRIETARY AND IS NOT TO BE REVEALED TO THIRD PARTIES WITHOUT WRITTEN CONSENT OF A CORPORATE OFFICER OF USS, LLC.



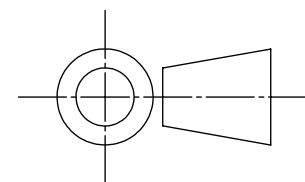
INTERNAL COMPONENTS SHOWN FOR REFERENCE.
NO INTERNAL COMPONENTS PROVIDED.

RELEASE FOR FABRICATION

NAME _____ SIGNATURE _____

DATE _____ COMPANY _____

[MILLIMETERS]
INCHES

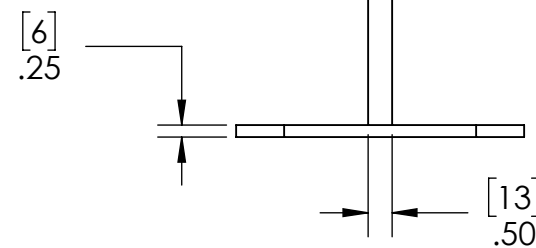
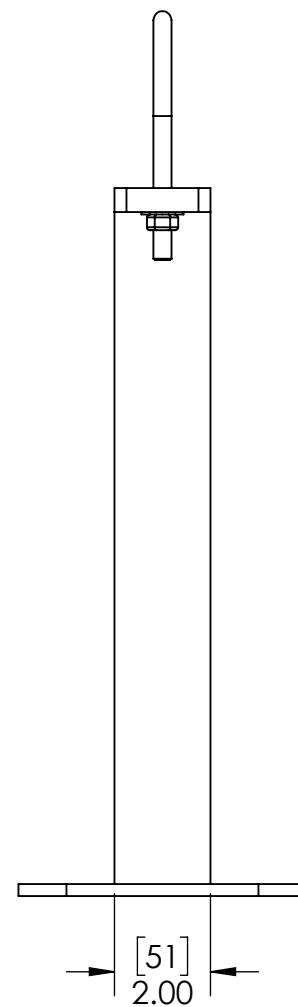
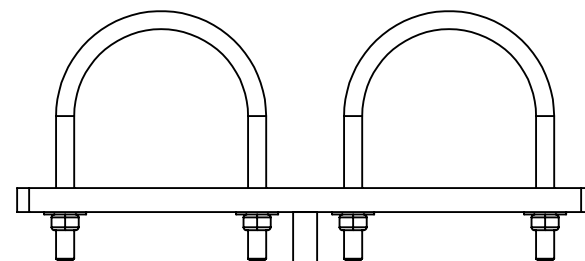
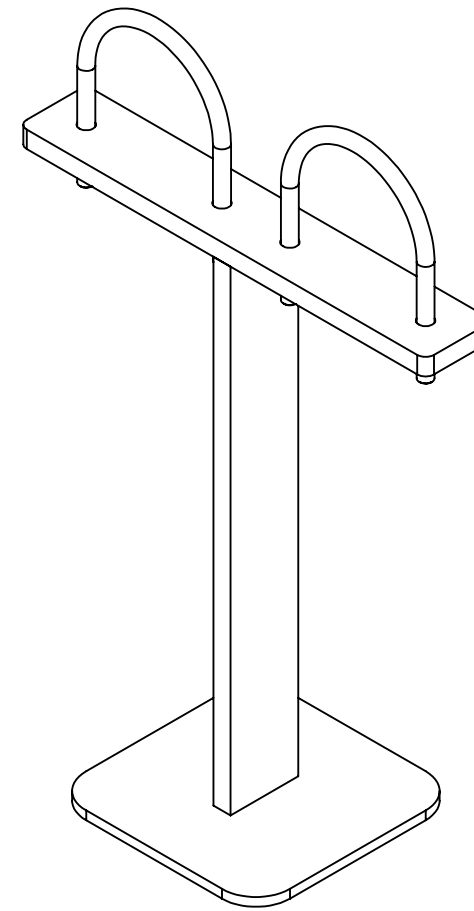
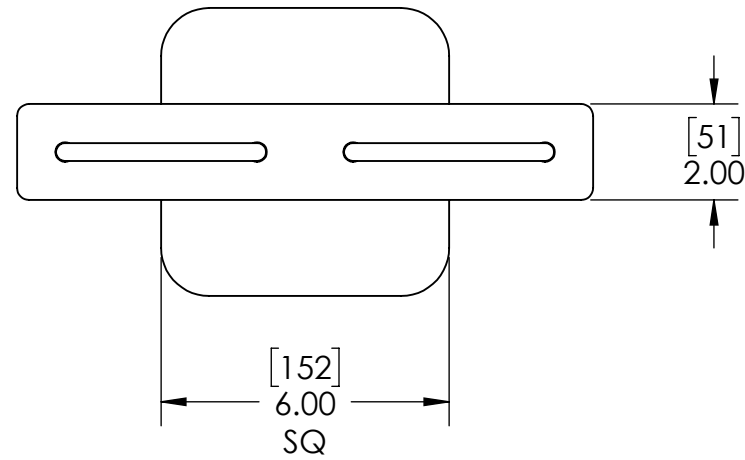


APPROVALS	DATE
DRAWN DLL	06-28-24
CHECKED DLL	06-28-24
APPROVED CDM	06-28-24
SHEET 4 OF 7	

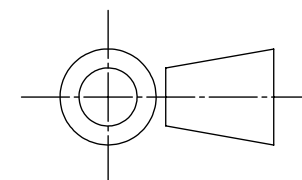
USS, LLC
PHONE: (260) 693-1172 FAX: (260) 693-1178
WEB SITE: WWW.USSPECIALISTS.COM
USS27.5(14)-20x20-20x32-48.75D
(2)HPV(3x2)[5]
FRONT CUT VIEW

SCALE: 1:6 SIZE: B

THE INFORMATION ON THIS DRAWING IS PROPRIETARY AND IS NOT TO BE REVEALED TO THIRD PARTIES WITHOUT WRITTEN CONSENT OF A CORPORATE OFFICER OF USS, LLC.



[MILLIMETERS]
INCHES



PIPE SUPPORT SHOWN TO SCALE. HOWEVER, CONTRACTOR SHOULD PROTOTYPE AND FIELD TEST FIRST ARTICLE BEFORE FABRICATING REMAINING PIPE SUPPORTS.

RELEASE FOR FABRICATION

NAME _____ SIGNATURE _____

DATE _____ COMPANY _____

APPROVALS	DATE
DRAWN DLL	06-28-24
CHECKED DLL	06-28-24
APPROVED CDM	06-28-24

USS, LLC
PHONE: (260) 693-1172 FAX: (260) 693-1178
WEB SITE: WWW.USSPECIALISTS.COM

USS27.5(14)-20x20-20x32-48.75D

(2)HPV(3x2)[5]

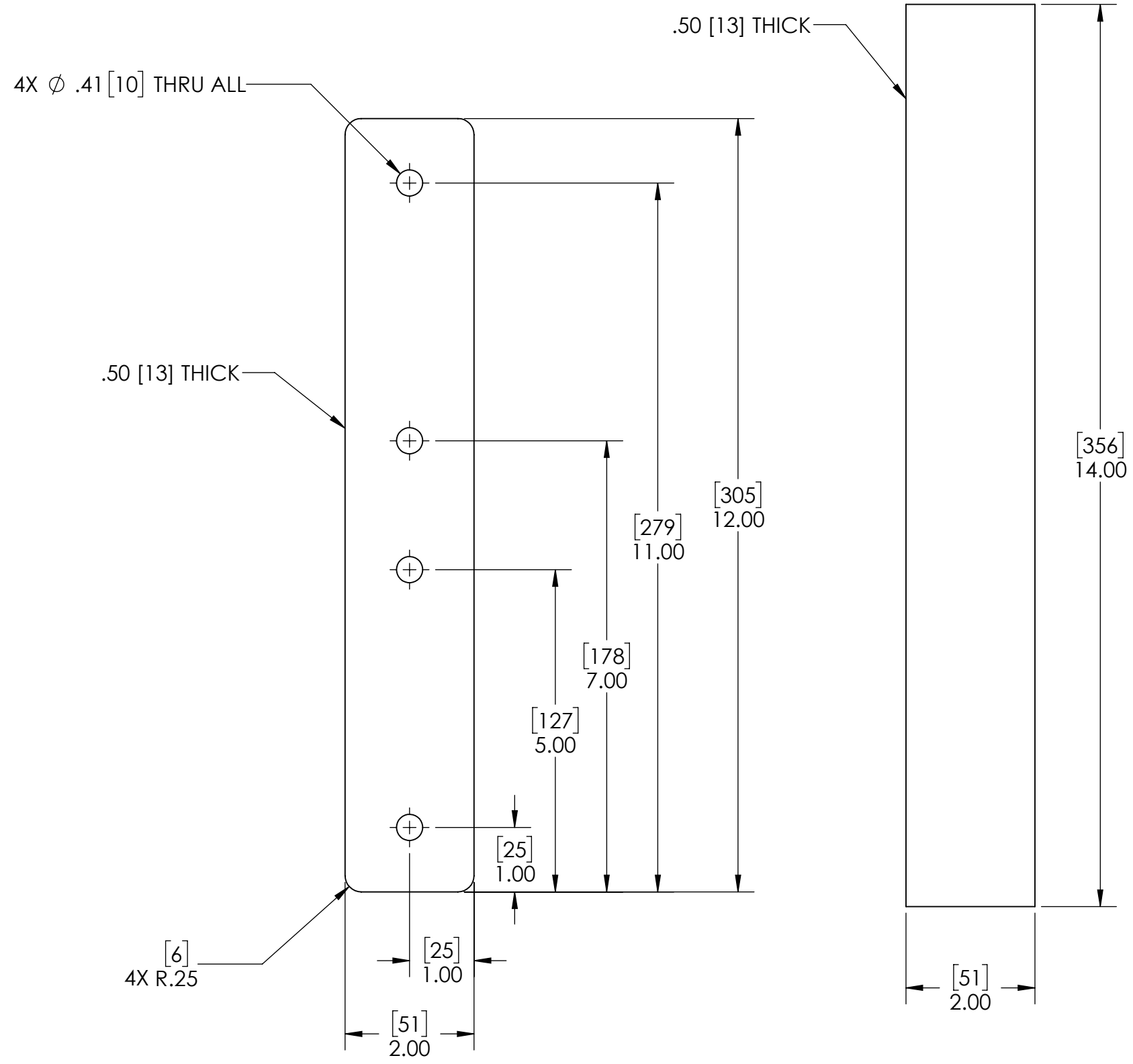
PIPE SUPPORT

SHEET 5 OF 7

SCALE: 1:4 SIZE: B

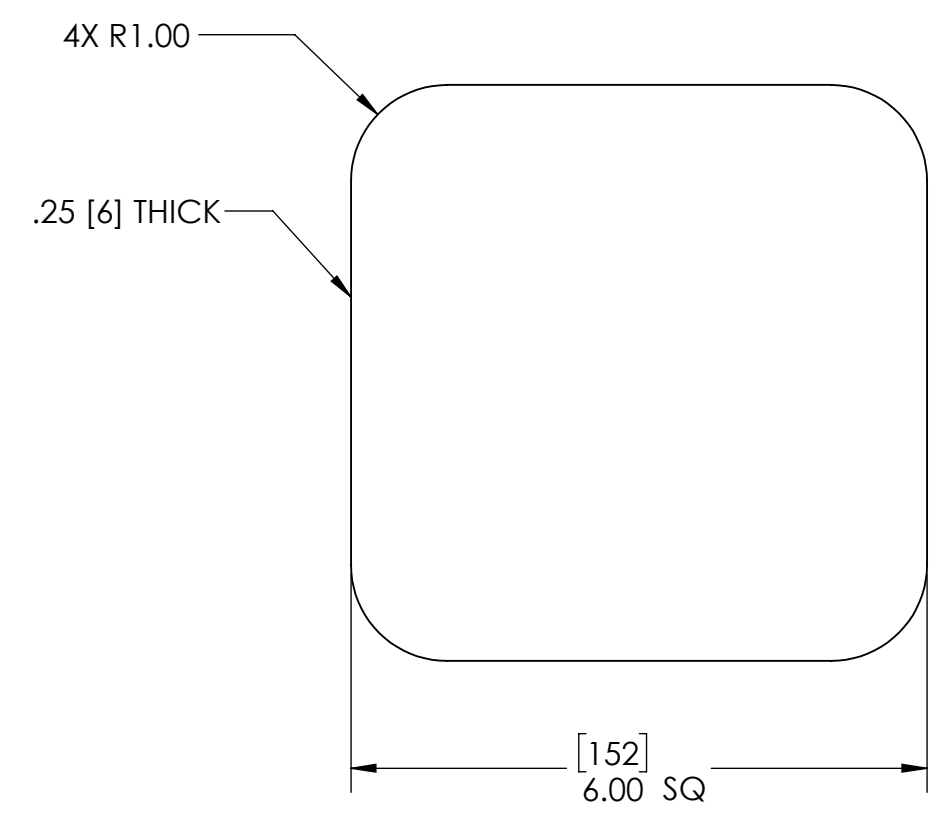
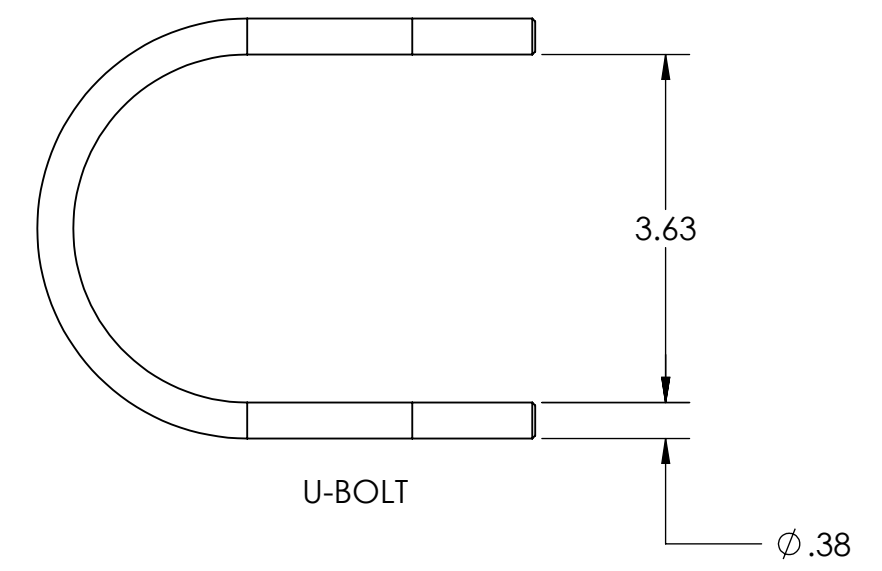


THE INFORMATION ON THIS DRAWING IS PROPRIETARY AND IS NOT TO BE REVEALED TO THIRD PARTIES WITHOUT WRITTEN CONSENT OF A CORPORATE OFFICER OF USS, LLC.



CROSSBAR

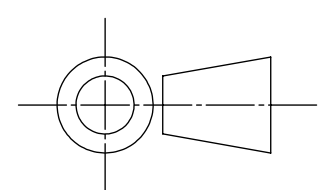
UPRIGHT



BASE PLATE

STEEL

[MILLIMETERS]
INCHES

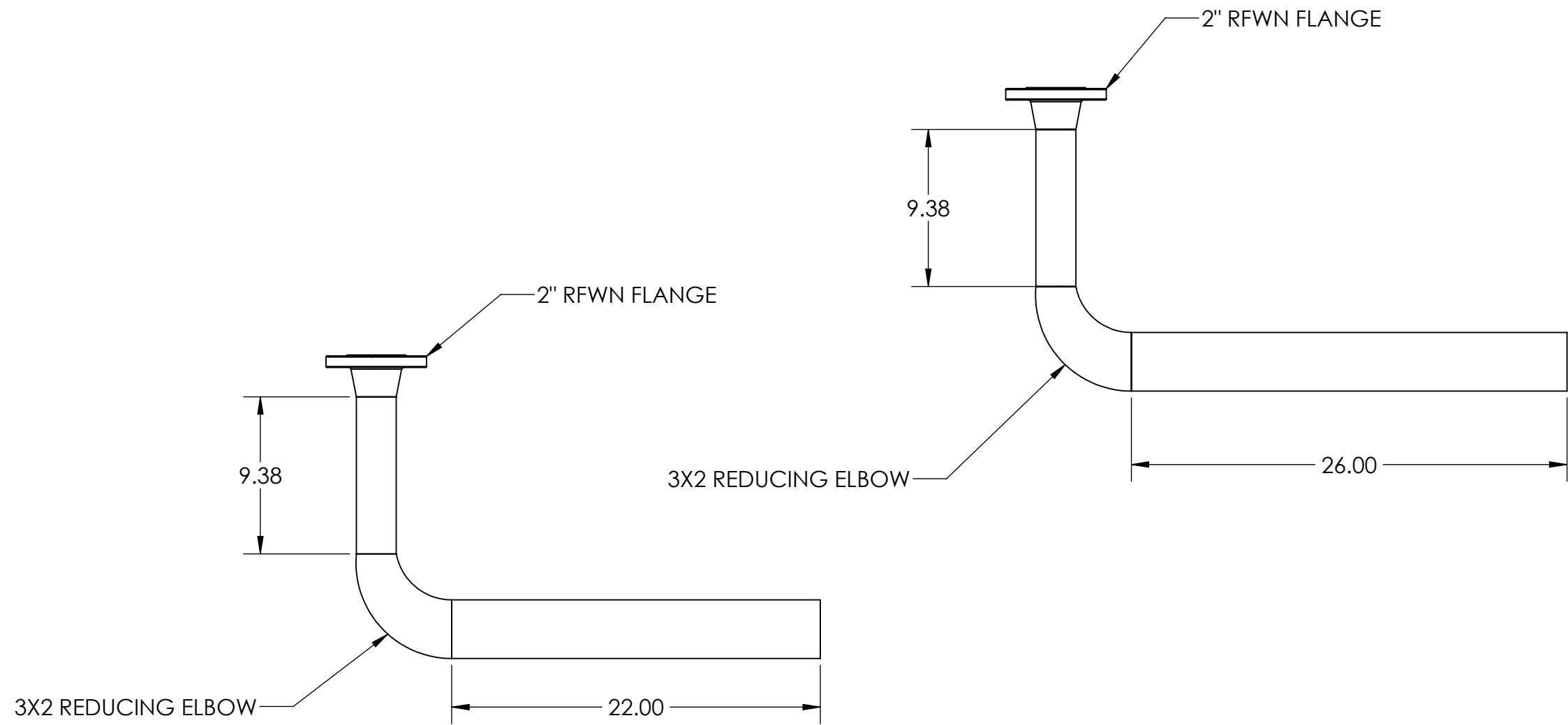


APPROVALS	DATE
DRAWN DLL	06-28-24
CHECKED DLL	06-28-24
APPROVED CDM	06-28-24
SHEET 6 OF 7	
SCALE: 1:2	SIZE: B

USS, LLC
 PHONE: (260) 693-1172 FAX: (260) 693-1178
 WEB SITE: WWW.USSPECIALISTS.COM

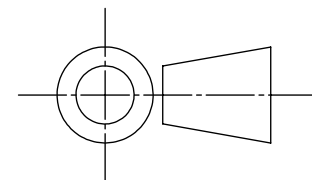
USS27.5(14)-20x20-20x32-48.75D
(2)HPV(3x2)[5]
PIPE SUPPORT PARTS

THE INFORMATION ON THIS DRAWING IS PROPRIETARY AND IS NOT TO BE REVEALED TO THIRD PARTIES WITHOUT WRITTEN CONSENT OF A CORPORATE OFFICER OF USS, LLC.



STACK-UP COMPONENTS SHOWN TO SCALE. HOWEVER, CONTRACTOR SHOULD PROTOTYPE AND FIELD TEST FIRST ARTICLE BEFORE FABRICATING REMAINING STACK-UPS.

[MILLIMETERS]
INCHES



APPROVALS	DATE
DRAWN DLL	06-28-24
CHECKED DLL	06-28-24
APPROVED CDM	06-28-24
SHEET 7 OF 7	
SCALE: 1:8	SIZE: B

USS, LLC
 PHONE: (260) 693-1172 FAX: (260) 693-1178
 WEB SITE: WWW.USSPECIALISTS.COM
USS27.5(14)-20x20-20x32-48.75D
(2)HPV(3x2)[5]
STACK-UPS
THE INFORMATION ON THIS DRAWING IS PROPRIETARY AND IS NOT TO BE REVEALED TO THIRD PARTIES WITHOUT WRITTEN CONSENT OF A CORPORATE OFFICER OF USS, LLC.

Utility Systems Specialists