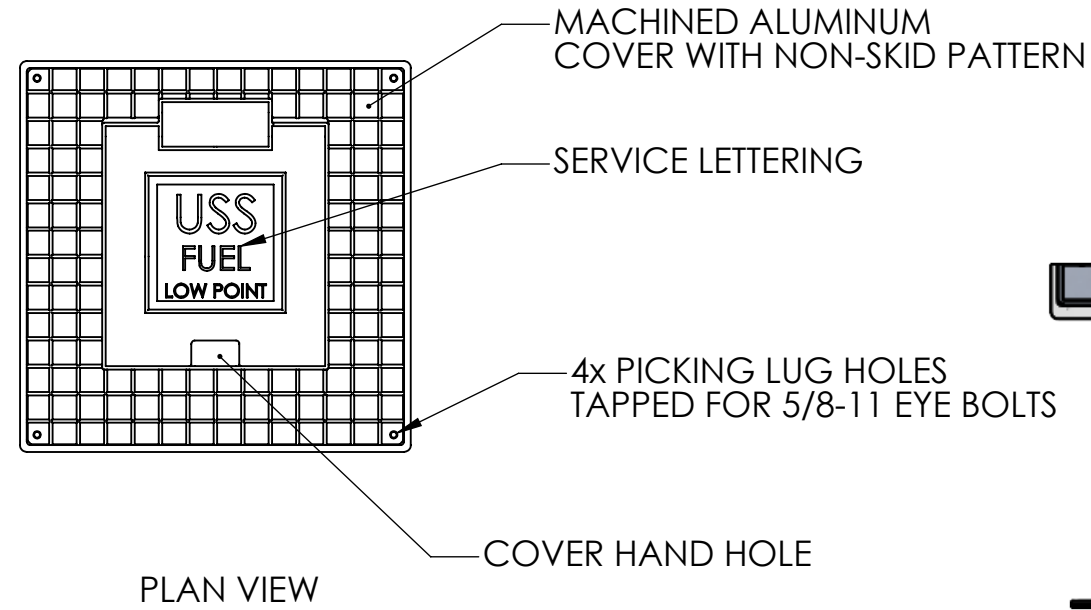
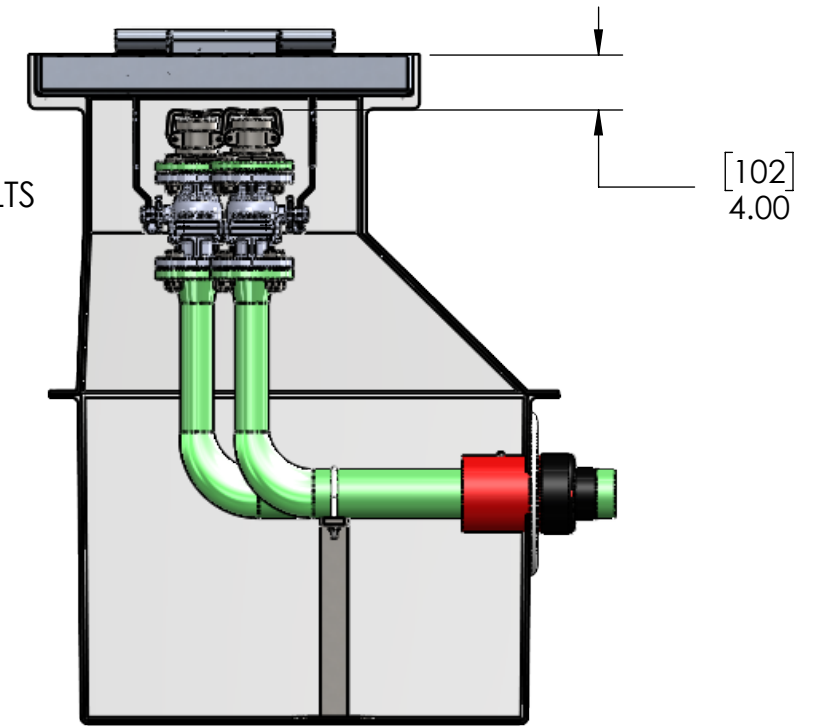


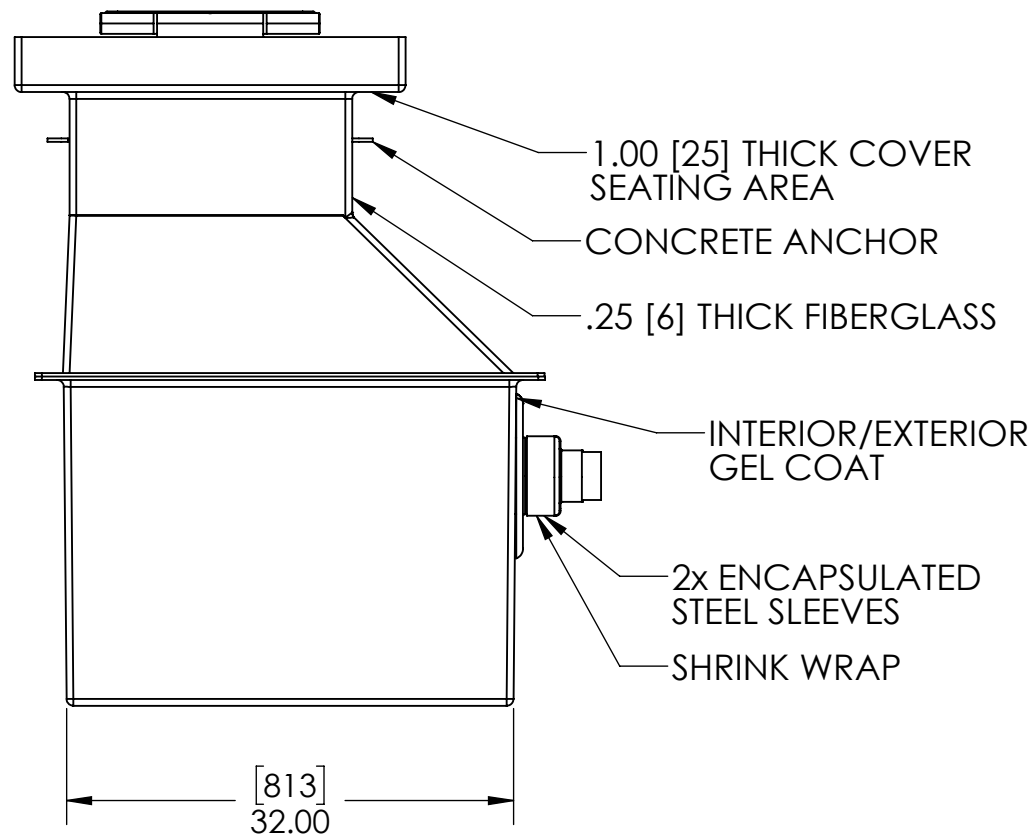
TOP VIEW



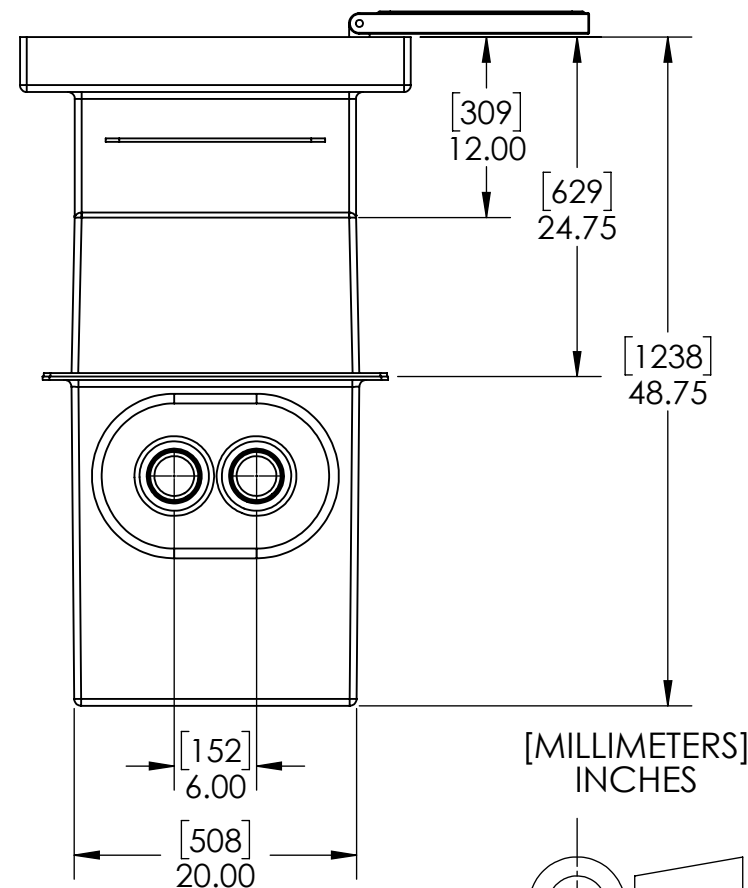
PLAN VIEW



FRONT CUT VIEW



FRONT VIEW



SIDE VIEW

INTERNAL COMPONENTS SHOWN FOR REFERENCE.  
NO INTERNAL COMPONENTS PROVIDED.

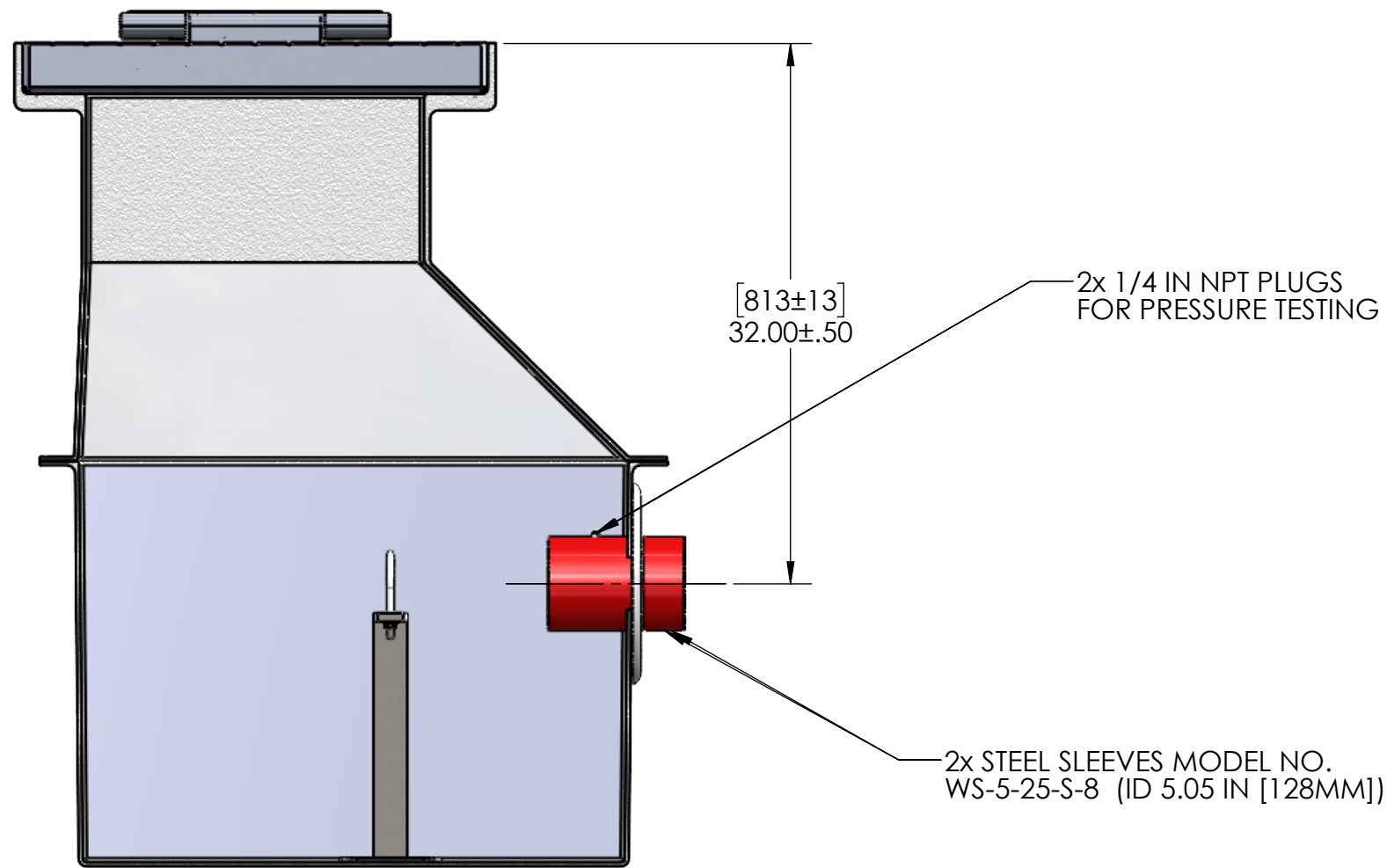


APPROVALS	DATE
DRAWN DLL	06-28-24
CHECKED DLL	06-28-24
APPROVED CDM	06-28-24
SHEET 1 OF 7	
SCALE: 1:14	SIZE: B

**USS, LLC**  
PHONE: (260) 693-1172 FAX: (260) 693-1178  
WEB SITE: WWW.USSPECIALISTS.COM

**USS27.5(14)-20x20-20x32-48.75D**  
**(2)LPD(3x2)[5]**  
**3 VIEW, PLAN, CUT**

THE INFORMATION ON THIS DRAWING IS PROPRIETARY AND IS NOT TO BE REVEALED TO THIRD PARTIES WITHOUT WRITTEN CONSENT OF A CORPORATE OFFICER OF USS, LLC.



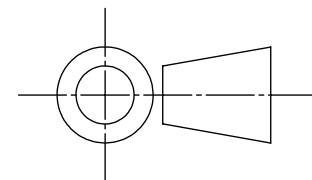
QUANTITY	_____
----------	-------

**RELEASE FOR FABRICATION**

NAME _____	SIGNATURE _____
DATE _____	COMPANY _____

EMPTY PIT: 397 LB [180 KG]

[MILLIMETERS]  
INCHES

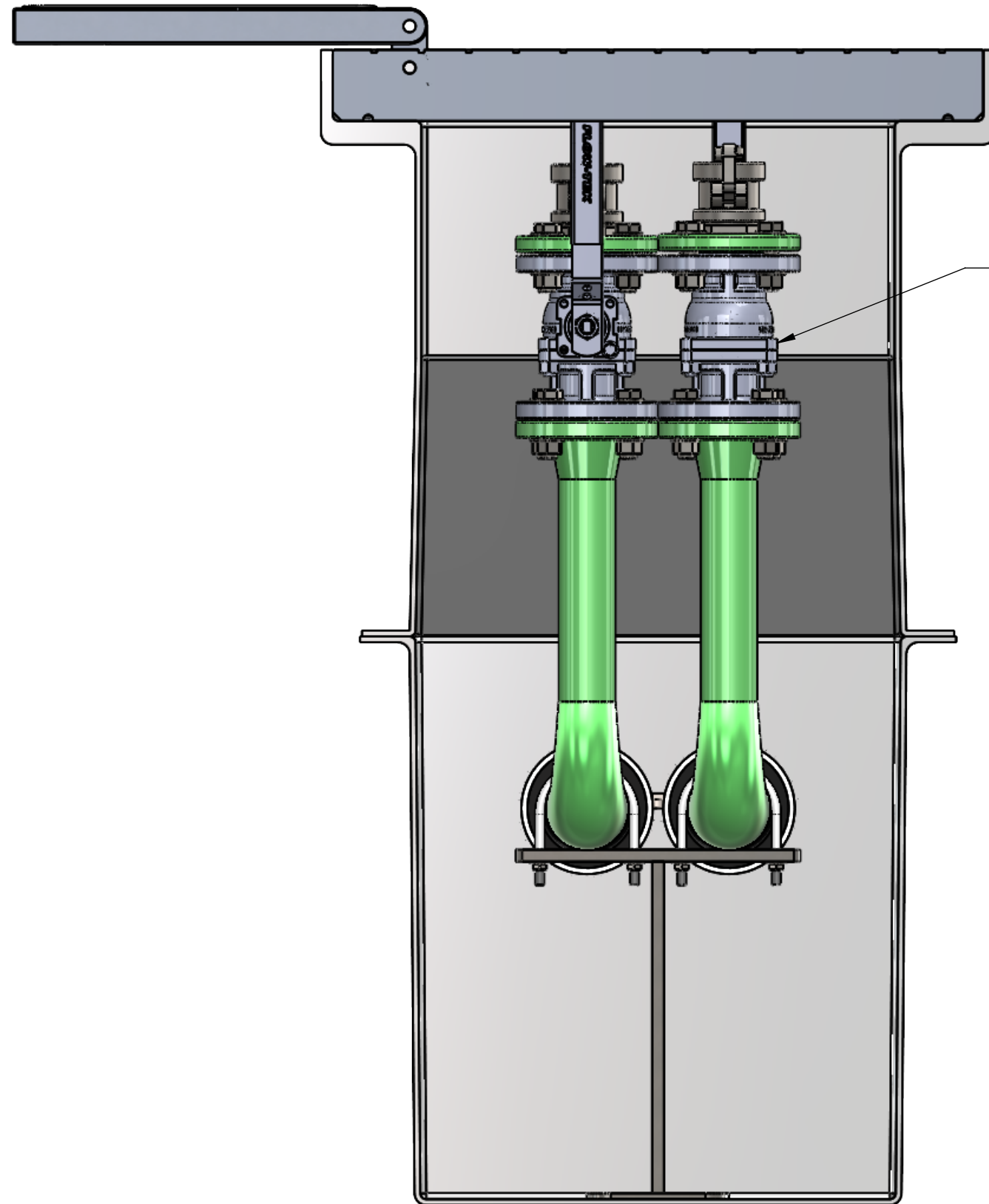


APPROVALS	DATE
DRAWN DLL	06-28-24
CHECKED DLL	06-28-24
APPROVED CDM	06-28-24
SHEET 2 OF 7	
SCALE: 1:10	SIZE: B

**USS, LLC**  
 PHONE: (260) 693-1172 FAX: (260) 693-1178  
 WEB SITE: WWW.USSPECIALISTS.COM

**USS27.5(14)-20x20-20x32-48.75D**  
**(2)LPD(3x2)[5]**  
**SUBMITTAL**

THE INFORMATION ON THIS DRAWING IS PROPRIETARY AND IS NOT TO BE REVEALED TO THIRD PARTIES WITHOUT WRITTEN CONSENT OF A CORPORATE OFFICER OF USS, LLC.



2" BALL VALVE, BRAY FLOTEK F-15 SERIES STAINLESS STEEL.

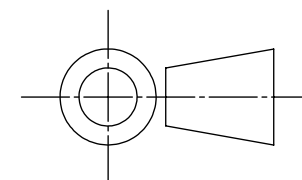
INTERNAL COMPONENTS SHOWN FOR REFERENCE.  
NO INTERNAL COMPONENTS PROVIDED.

**RELEASE FOR FABRICATION**

NAME \_\_\_\_\_ SIGNATURE \_\_\_\_\_

DATE \_\_\_\_\_ COMPANY \_\_\_\_\_

[MILLIMETERS]  
INCHES



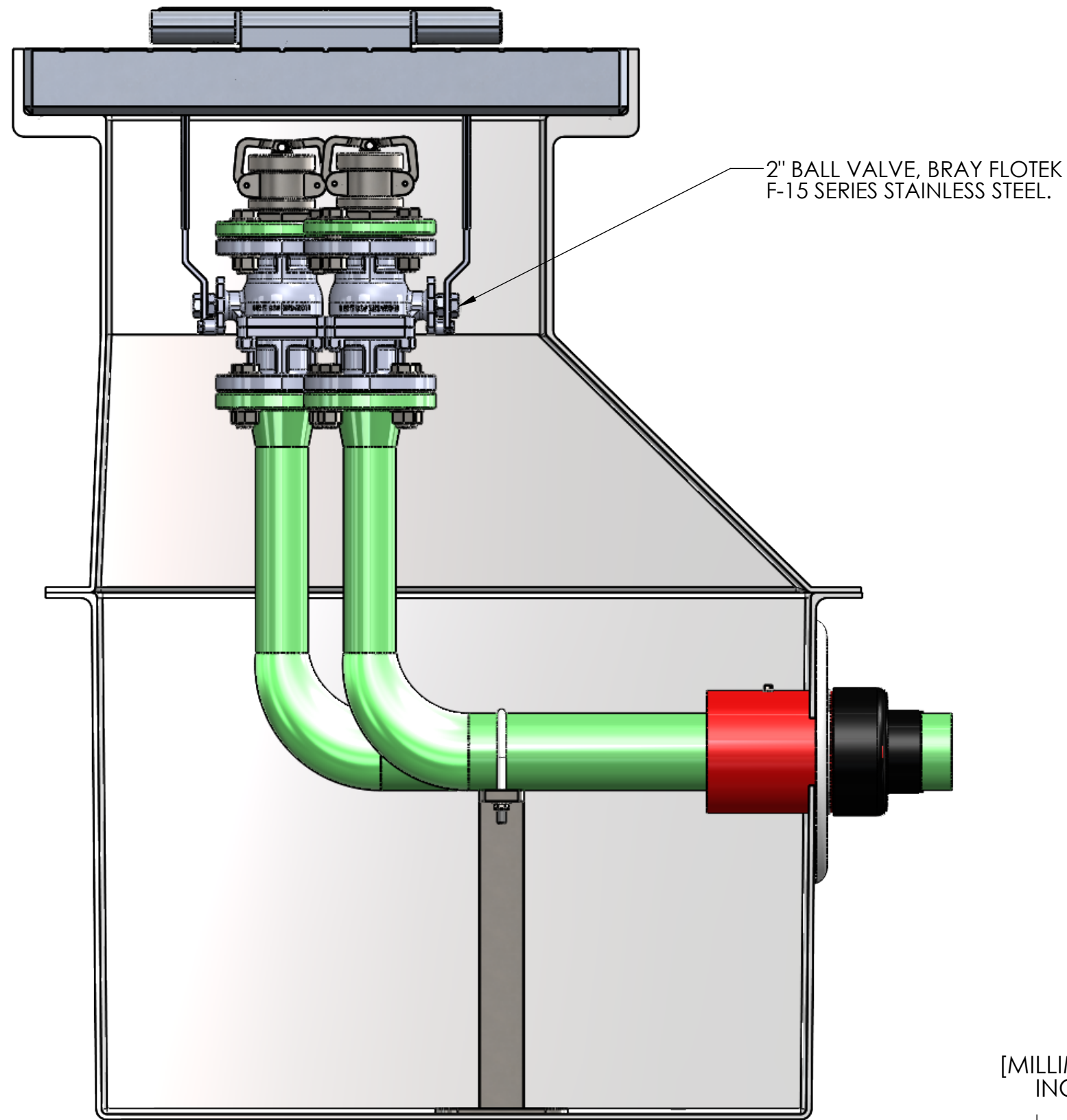
APPROVALS	DATE
DRAWN DLL	06-28-24
CHECKED DLL	06-28-24
APPROVED CDM	06-28-24
SHEET 3 OF 7	

**USS, LLC**  
PHONE: (260) 693-1172 FAX: (260) 693-1178  
WEB SITE: WWW.USSPECIALISTS.COM  
**USS27.5(14)-20x20-20x32-48.75D**  
**(2)LPD(3x2)[5]**  
**SIDE CUT VIEW**

SCALE: 1:6 SIZE: B

THE INFORMATION ON THIS DRAWING IS PROPRIETARY AND IS NOT TO BE REVEALED TO THIRD PARTIES WITHOUT WRITTEN CONSENT OF A CORPORATE OFFICER OF USS, LLC.

Utility Systems Specialists



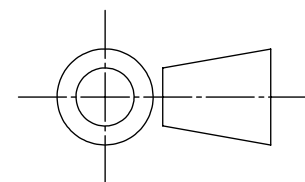
INTERNAL COMPONENTS SHOWN FOR REFERENCE.  
NO INTERNAL COMPONENTS PROVIDED.

**RELEASE FOR FABRICATION**

NAME \_\_\_\_\_ SIGNATURE \_\_\_\_\_

DATE \_\_\_\_\_ COMPANY \_\_\_\_\_

[MILLIMETERS]  
INCHES

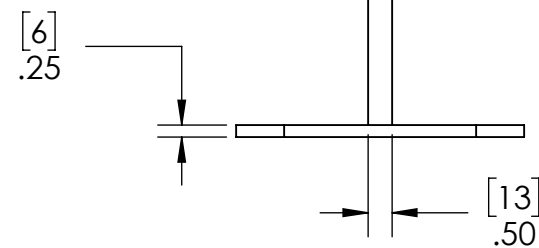
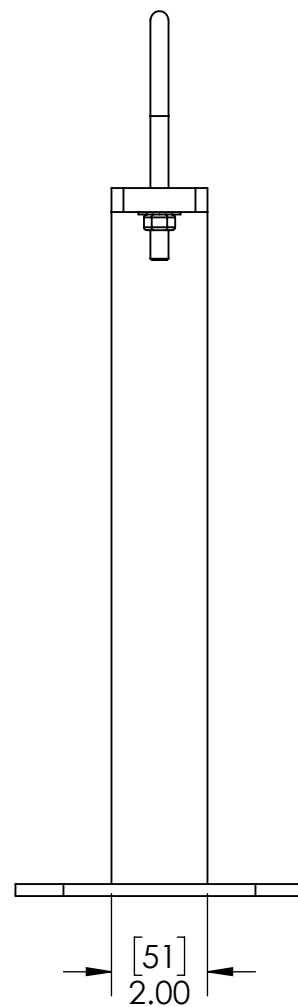
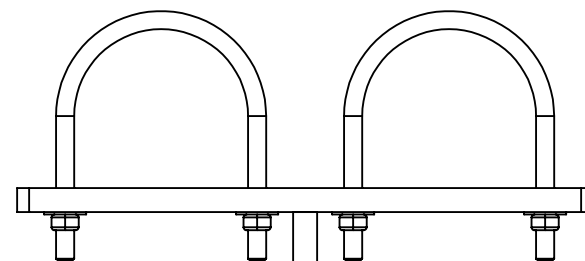
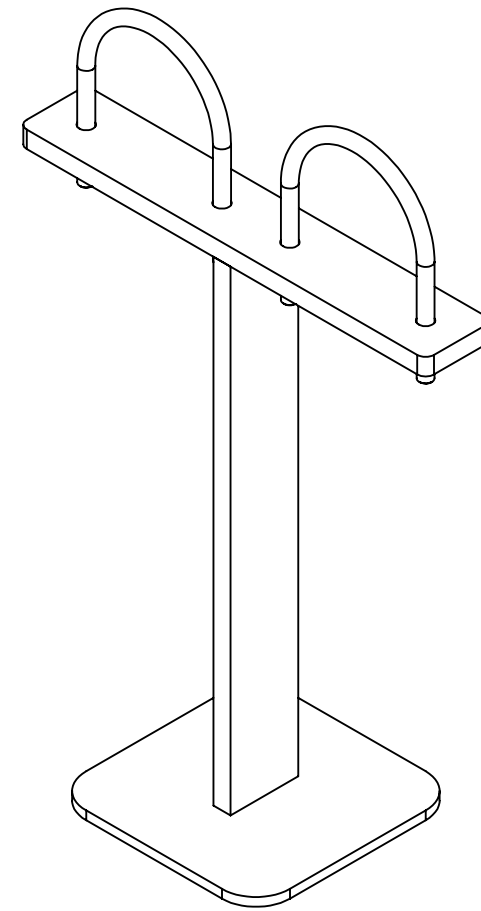
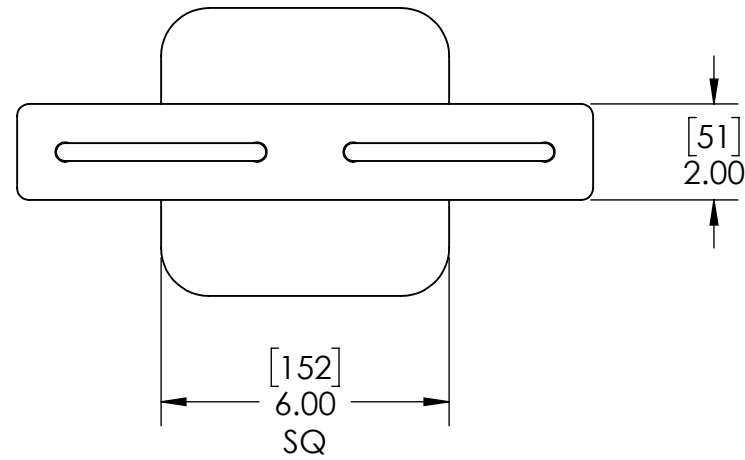


APPROVALS	DATE
DRAWN DLL	06-28-24
CHECKED DLL	06-28-24
APPROVED CDM	06-28-24
SHEET 4 OF 7	

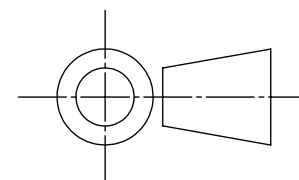
**USS, LLC**  
PHONE: (260) 693-1172 FAX: (260) 693-1178  
WEB SITE: WWW.USSPECIALISTS.COM  
**USS27.5(14)-20x20-20x32-48.75D**  
**(2)LPD(3x2)[5]**  
**FRONT CUT VIEW**

SCALE: 1:6 SIZE: B

THE INFORMATION ON THIS DRAWING IS PROPRIETARY AND IS NOT TO BE REVEALED TO THIRD PARTIES WITHOUT WRITTEN CONSENT OF A CORPORATE OFFICER OF USS, LLC.



[MILLIMETERS]  
INCHES



PIPE SUPPORT SHOWN TO SCALE. HOWEVER, CONTRACTOR SHOULD PROTOTYPE AND FIELD TEST FIRST ARTICLE BEFORE FABRICATING REMAINING PIPE SUPPORTS.

**RELEASE FOR FABRICATION**

NAME \_\_\_\_\_ SIGNATURE \_\_\_\_\_

DATE \_\_\_\_\_ COMPANY \_\_\_\_\_

APPROVALS	DATE
DRAWN DLL	06-28-24
CHECKED DLL	06-28-24
APPROVED CDM	06-28-24

**USS, LLC**  
PHONE: (260) 693-1172 FAX: (260) 693-1178  
WEB SITE: WWW.USSPECIALISTS.COM

**USS27.5(14)-20x20-20x32-48.75D**

**(2)LPD(3x2)[5]**

**PIPE SUPPORT**

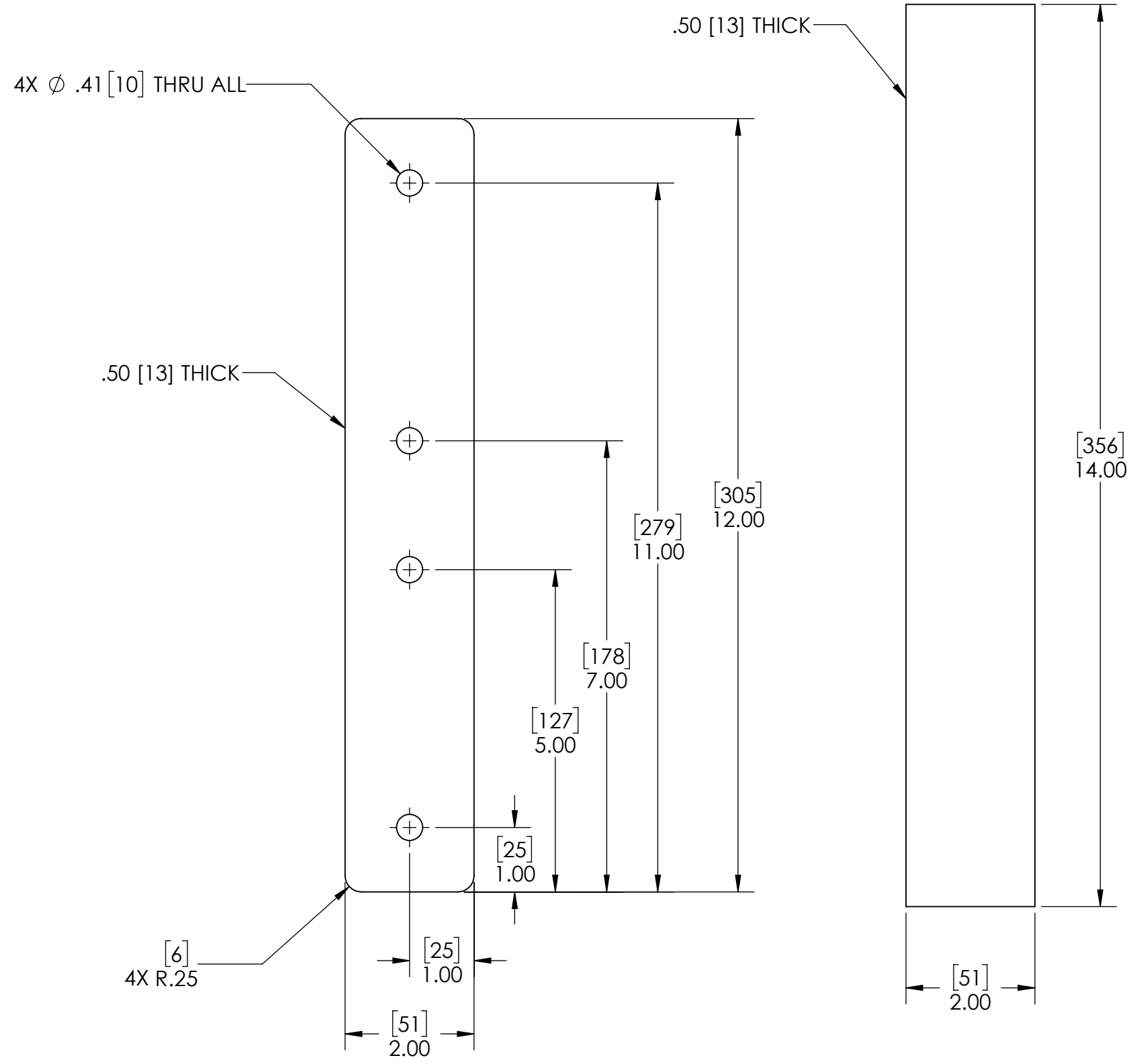
SHEET 5 OF 7

SCALE: 1:4 SIZE: B



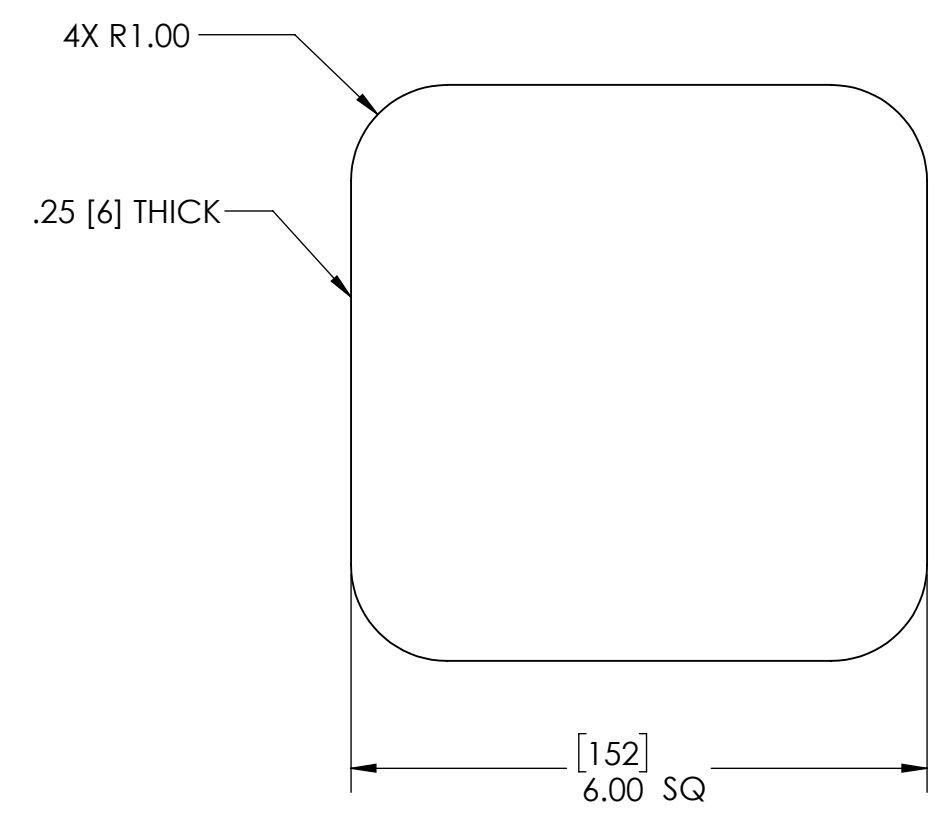
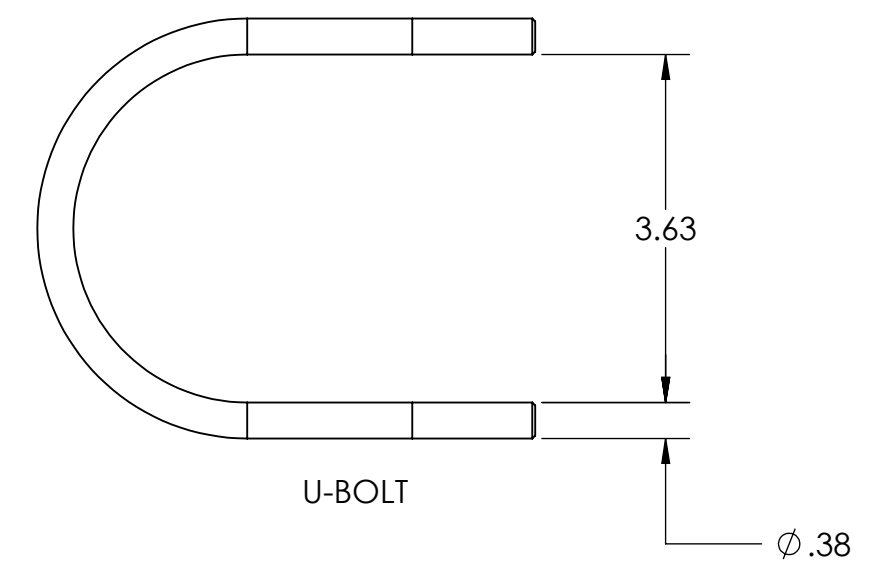
Utility Systems Specialists

THE INFORMATION ON THIS DRAWING IS PROPRIETARY AND IS NOT TO BE REVEALED TO THIRD PARTIES WITHOUT WRITTEN CONSENT OF A CORPORATE OFFICER OF USS, LLC.



CROSSBAR

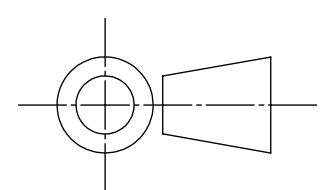
UPRIGHT



BASE PLATE

STEEL

[MILLIMETERS]  
INCHES

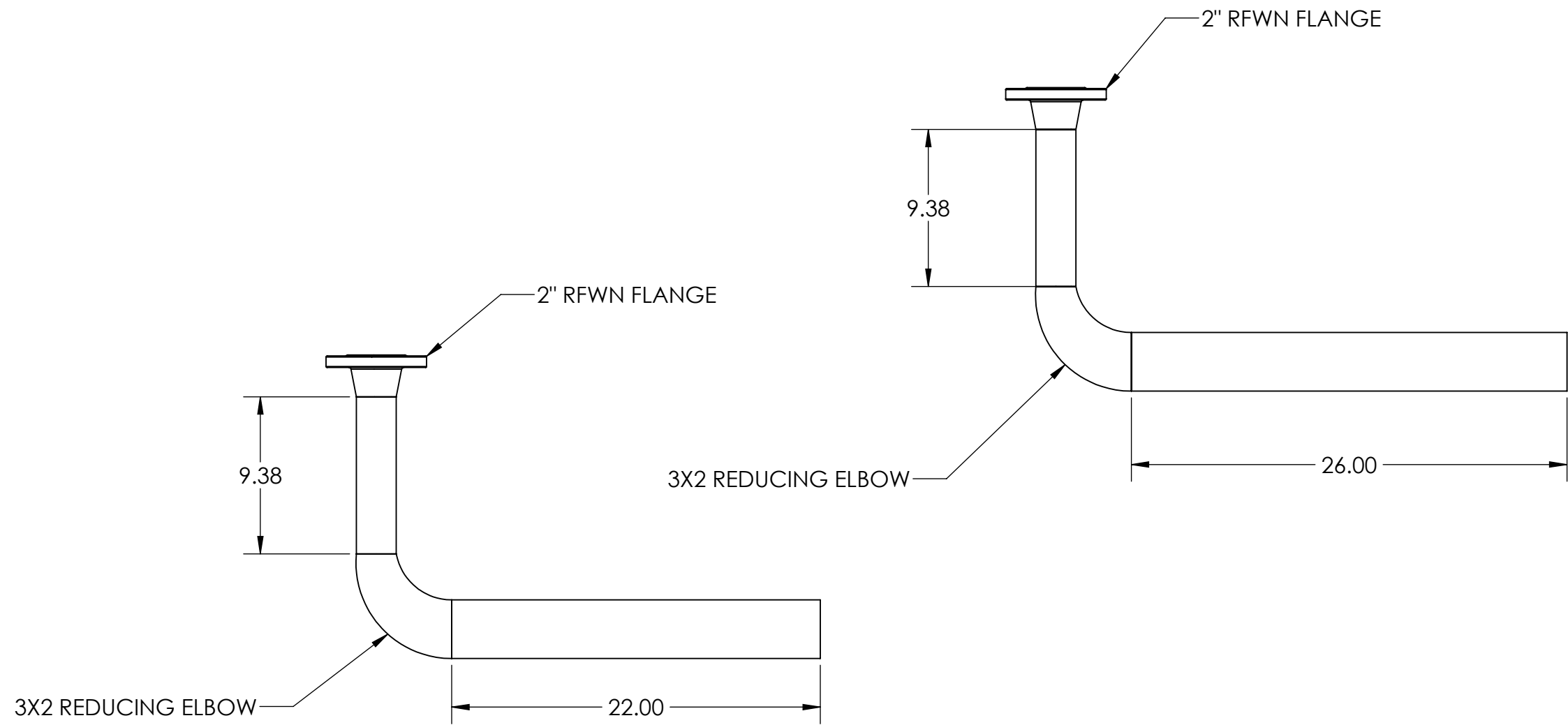


APPROVALS	DATE
DRAWN DLL	06-28-24
CHECKED DLL	06-28-24
APPROVED CDM	06-28-24
SHEET 6 OF 7	
SCALE: 1:2	SIZE: B

**USS, LLC**  
 PHONE: (260) 693-1172 FAX: (260) 693-1178  
 WEB SITE: WWW.USSPECIALISTS.COM

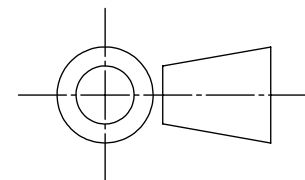
**USS27.5(14)-20x20-20x32-48.75D**  
**(2)LPD(3x2)[5]**  
**PIPE SUPPORT PARTS**

THE INFORMATION ON THIS DRAWING IS PROPRIETARY AND IS NOT TO BE REVEALED TO THIRD PARTIES WITHOUT WRITTEN CONSENT OF A CORPORATE OFFICER OF USS, LLC.



STACK-UP COMPONENTS SHOWN TO SCALE. HOWEVER, CONTRACTOR SHOULD PROTOTYPE AND FIELD TEST FIRST ARTICLE BEFORE FABRICATING REMAINING STACK-UPS.

[MILLIMETERS]  
INCHES



APPROVALS	DATE
DRAWN DLL	06-28-24
CHECKED DLL	06-28-24
APPROVED CDM	06-28-24
SHEET 7 OF 7	
SCALE: 1:8	SIZE: B

**USS, LLC**  
 PHONE: (260) 693-1172 FAX: (260) 693-1178  
 WEB SITE: WWW.USSPECIALISTS.COM

**USS27.5(14)-20x20-20x32-48.75D**  
**(2)LPD(3x2)[5]**  
**STACK-UPS**

THE INFORMATION ON THIS DRAWING IS PROPRIETARY AND IS NOT TO BE REVEALED TO THIRD PARTIES WITHOUT WRITTEN CONSENT OF A CORPORATE OFFICER OF USS, LLC.