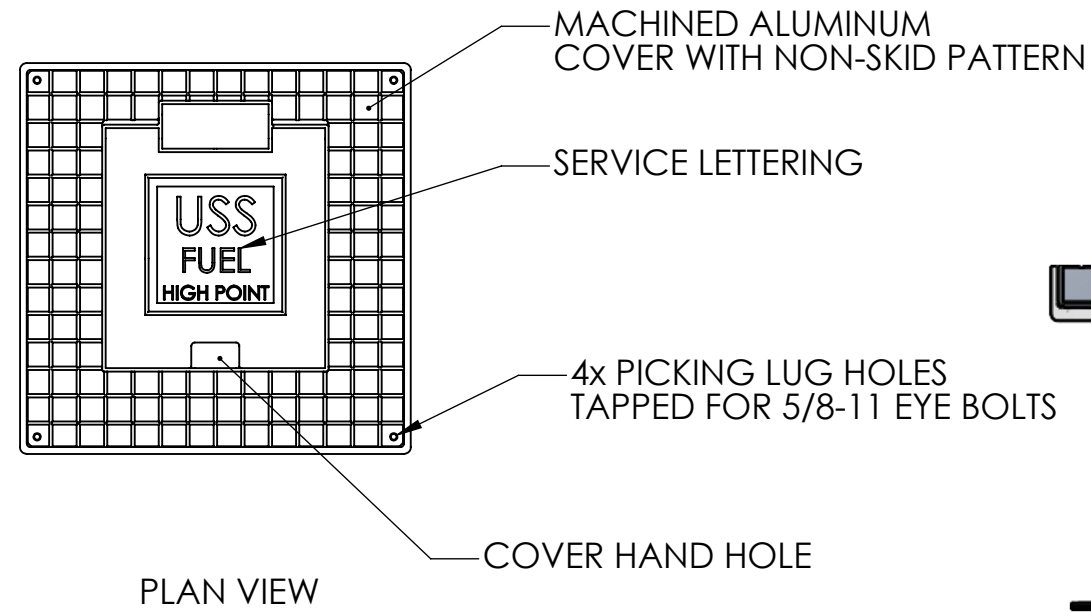
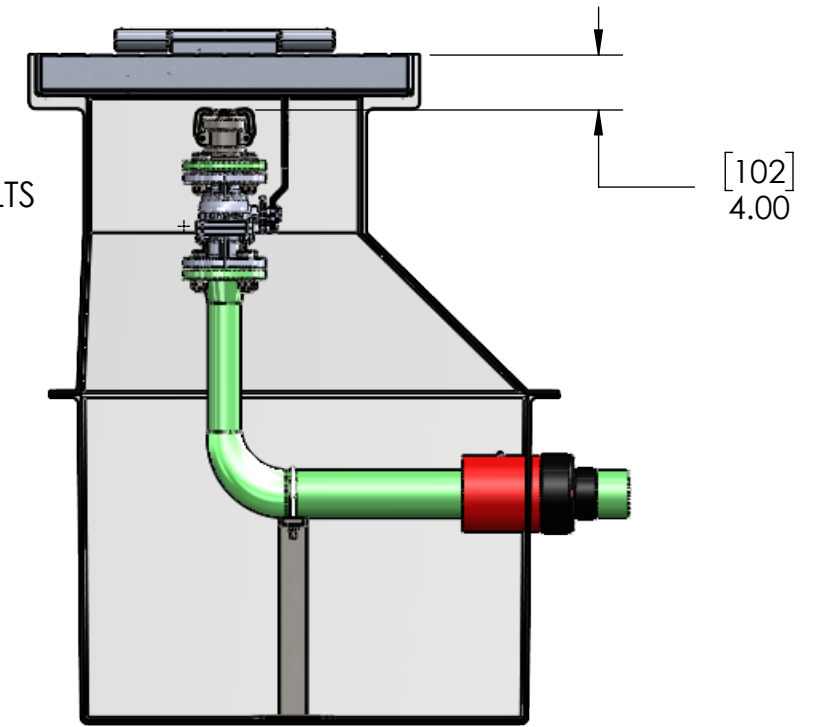


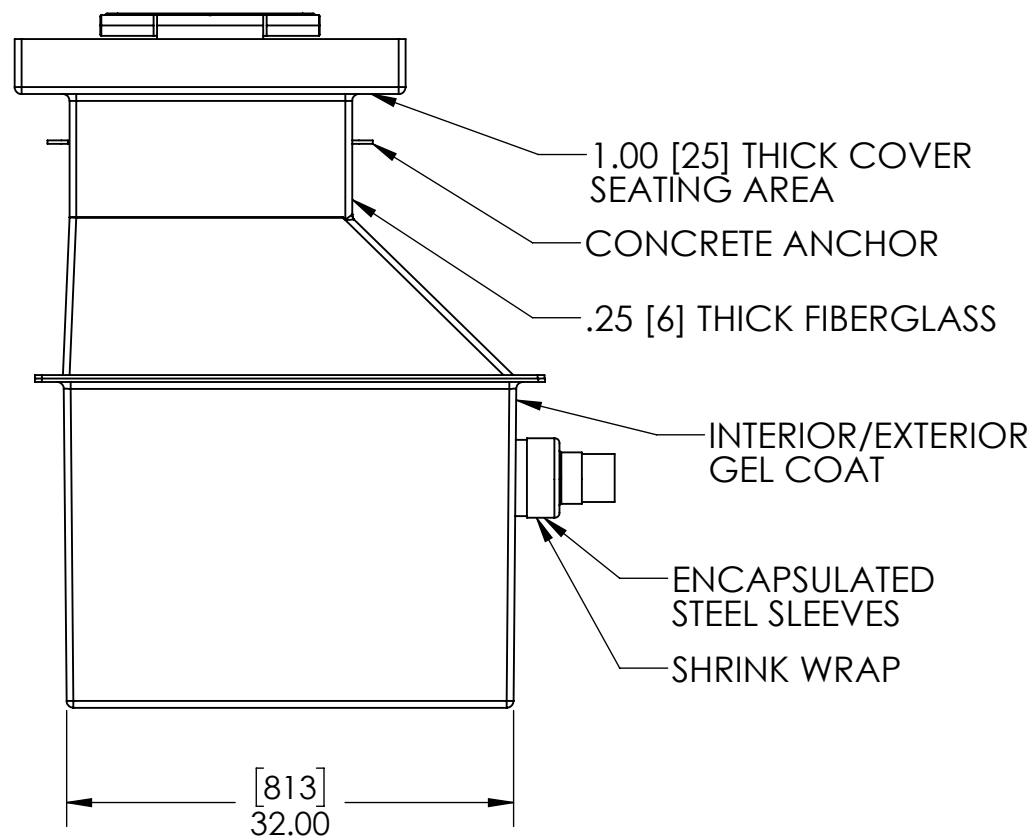
TOP VIEW



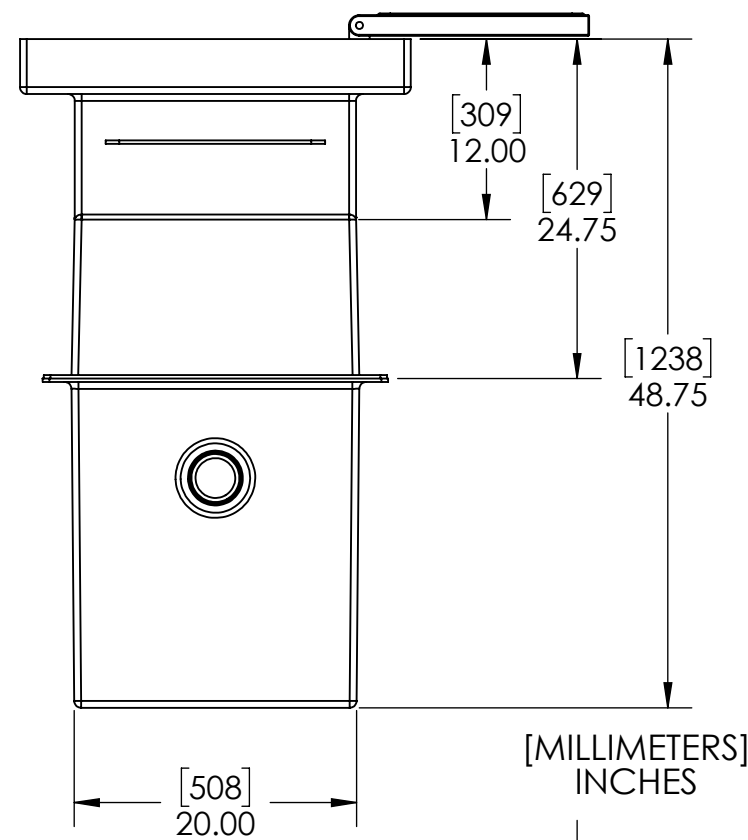
PLAN VIEW



FRONT CUT VIEW



FRONT VIEW



SIDE VIEW

INTERNAL COMPONENTS SHOWN FOR REFERENCE. NO INTERNAL COMPONENTS PROVIDED.

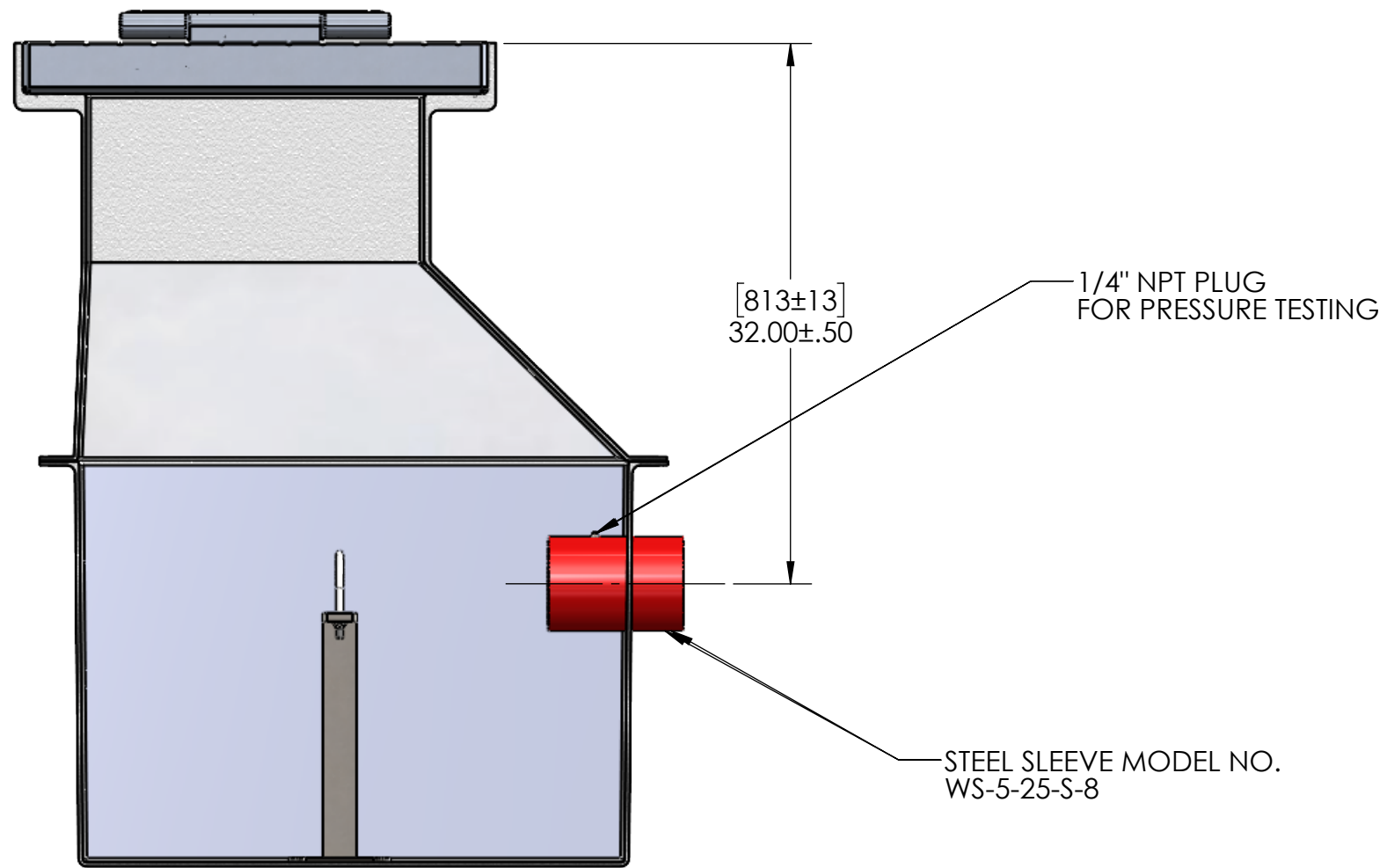


APPROVALS	DATE
DRAWN DLL	08-19-24
CHECKED DLL	08-19-24
APPROVED CDM	08-19-24
SHEET 1 OF 7	
SCALE: 1:14	SIZE: B

**USS, LLC**  
PHONE: (260) 693-1172 FAX: (260) 693-1178  
WEB SITE: WWW.USSPECIALISTS.COM

**USS27.5(14)-20x20-20x32-48.75D**  
**HPV(3x2)[5]**  
**3 VIEW, PLAN, CUT**

THE INFORMATION ON THIS DRAWING IS PROPRIETARY AND IS NOT TO BE REVEALED TO THIRD PARTIES WITHOUT WRITTEN CONSENT OF A CORPORATE OFFICER OF USS, LLC.



QUANTITY \_\_\_\_\_

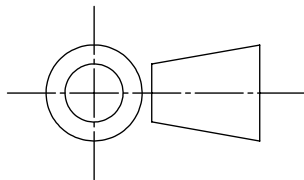
**RELEASE FOR FABRICATION**

NAME \_\_\_\_\_ SIGNATURE \_\_\_\_\_

DATE \_\_\_\_\_ COMPANY \_\_\_\_\_

EMPTY PIT: 377 LB [171 KG]

[MILLIMETERS]  
INCHES

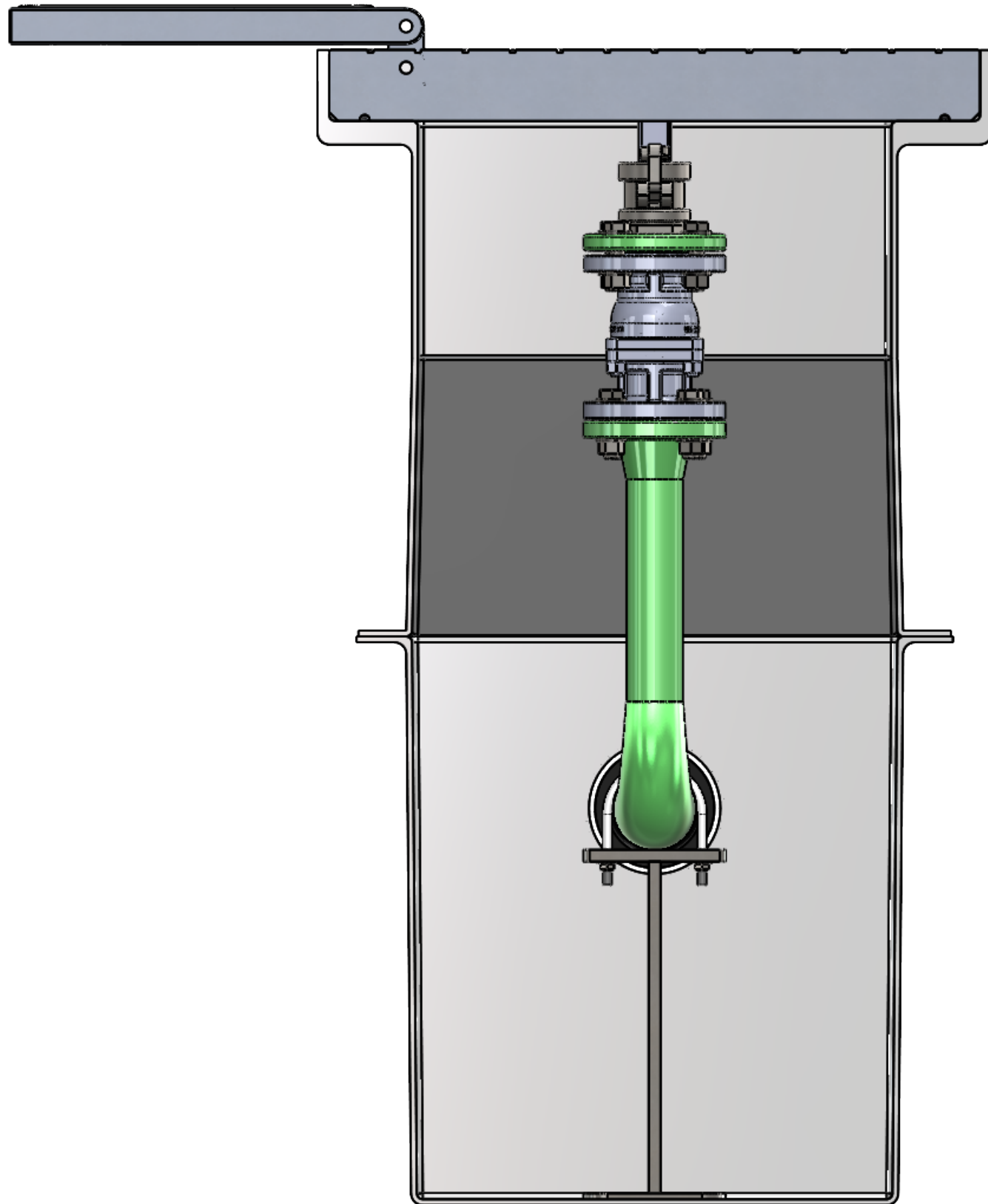


APPROVALS	DATE
DRAWN DLL	08-19-24
CHECKED DLL	08-19-24
APPROVED CDM	08-19-24
SHEET 2 OF 7	
SCALE: 1:10	SIZE: B

**USS, LLC**  
PHONE: (260) 693-1172 FAX: (260) 693-1178  
WEB SITE: WWW.USSPECIALISTS.COM

**USS27.5(14)-20x20-20x32-48.75D**  
**HPV(3x2)[5]**  
**SUBMITTAL**

THE INFORMATION ON THIS DRAWING IS PROPRIETARY AND IS NOT TO BE REVEALED TO THIRD PARTIES WITHOUT WRITTEN CONSENT OF A CORPORATE OFFICER OF USS, LLC.



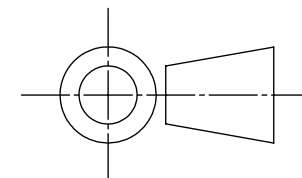
INTERNAL COMPONENTS SHOWN FOR REFERENCE.  
NO INTERNAL COMPONENTS PROVIDED.

**RELEASE FOR FABRICATION**

NAME \_\_\_\_\_ SIGNATURE \_\_\_\_\_

DATE \_\_\_\_\_ COMPANY \_\_\_\_\_

[MILLIMETERS]  
INCHES



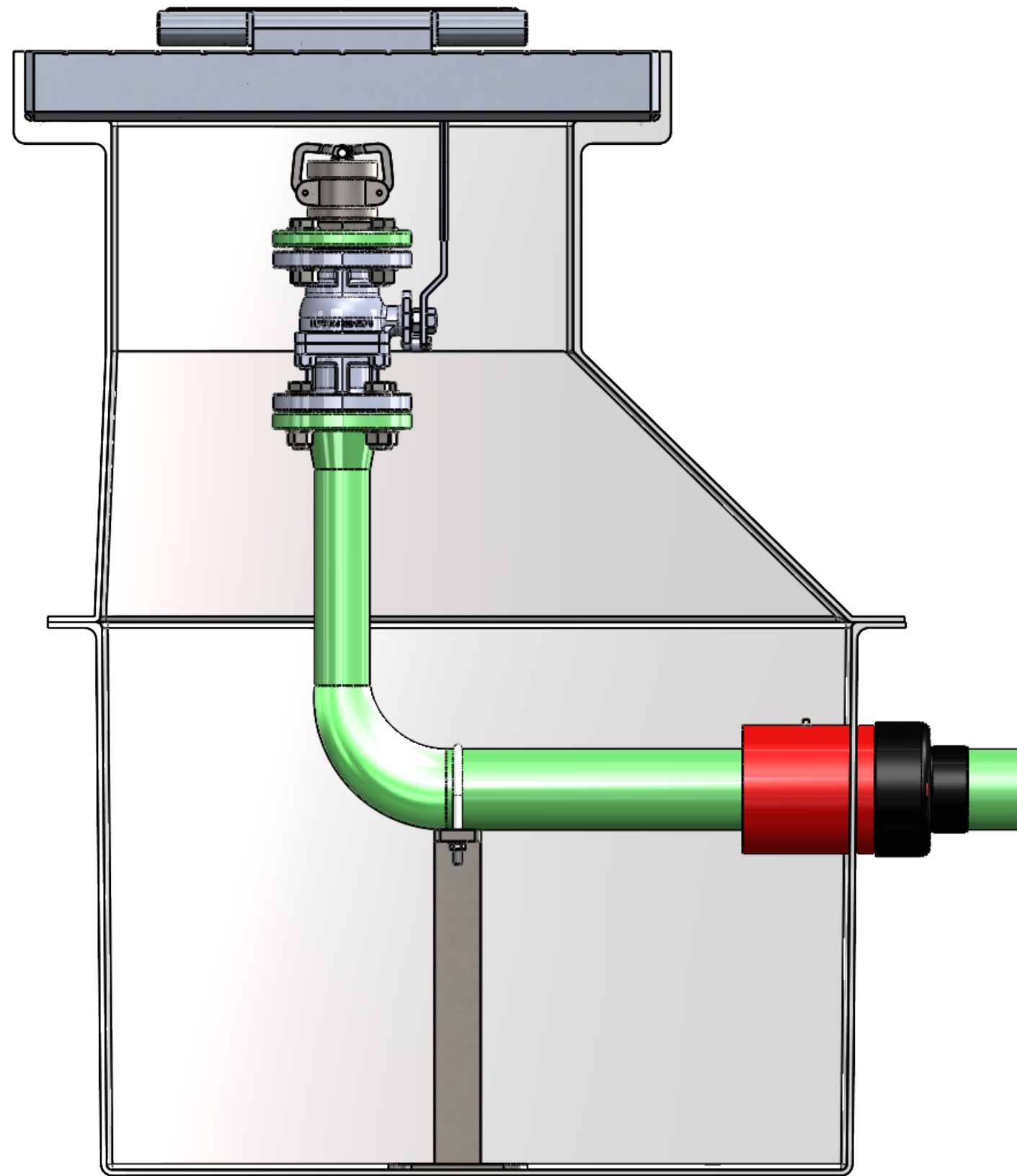
APPROVALS	DATE
DRAWN DLL	08-19-24
CHECKED DLL	08-19-24
APPROVED CDM	08-19-24
SHEET 3 OF 7	

**USS, LLC**  
PHONE: (260) 693-1172 FAX: (260) 693-1178  
WEB SITE: WWW.USSPECIALISTS.COM  
**USS27.5(14)-20x20-20x32-48.75D**  
**HPV(3x2)[5]**  
**SIDE CUT VIEW**

SCALE: 1:6 SIZE: B

THE INFORMATION ON THIS DRAWING IS PROPRIETARY AND IS NOT TO BE REVEALED TO THIRD PARTIES WITHOUT WRITTEN CONSENT OF A CORPORATE OFFICER OF USS, LLC.

Utility Systems Specialists



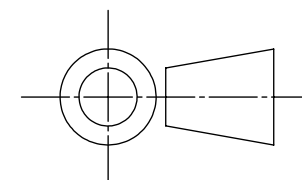
INTERNAL COMPONENTS SHOWN FOR REFERENCE.  
NO INTERNAL COMPONENTS PROVIDED.

**RELEASE FOR FABRICATION**

NAME \_\_\_\_\_ SIGNATURE \_\_\_\_\_

DATE \_\_\_\_\_ COMPANY \_\_\_\_\_

[MILLIMETERS]  
INCHES

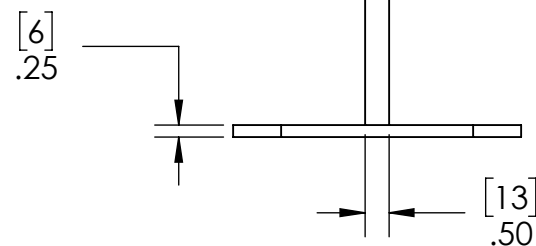
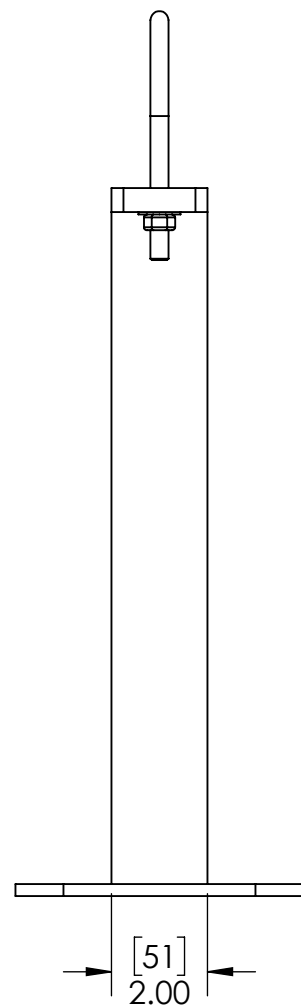
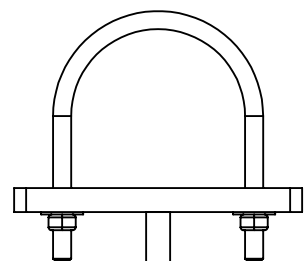
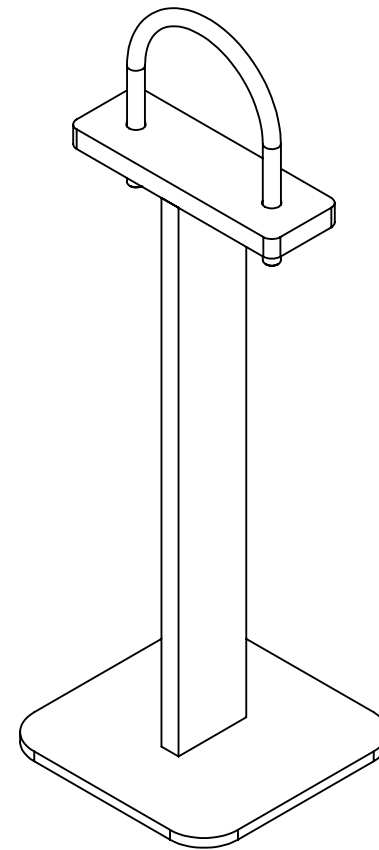
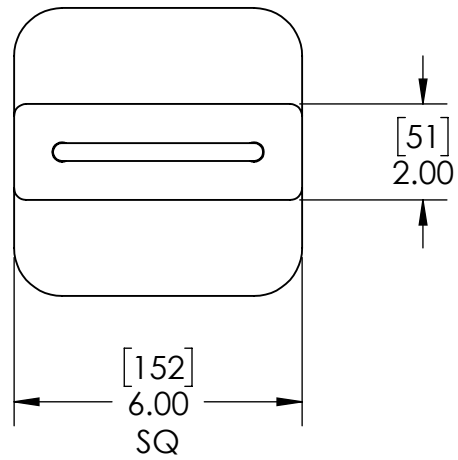


APPROVALS	DATE
DRAWN DLL	08-19-24
CHECKED DLL	08-19-24
APPROVED CDM	08-19-24

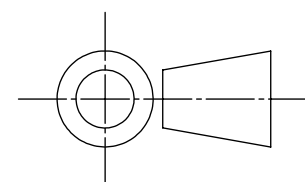
SHEET 4 OF 7  
SCALE: 1:6 SIZE: B

**USS, LLC**  
PHONE: (260) 693-1172 FAX: (260) 693-1178  
WEB SITE: WWW.USSPECIALISTS.COM  
**USS27.5(14)-20x20-20x32-48.75D**  
**HPV(3x2)[5]**  
**FRONT CUT VIEW**  
THE INFORMATION ON THIS DRAWING IS PROPRIETARY AND IS NOT TO BE REVEALED TO THIRD PARTIES WITHOUT WRITTEN CONSENT OF A CORPORATE OFFICER OF USS, LLC.

Utility Systems Specialists

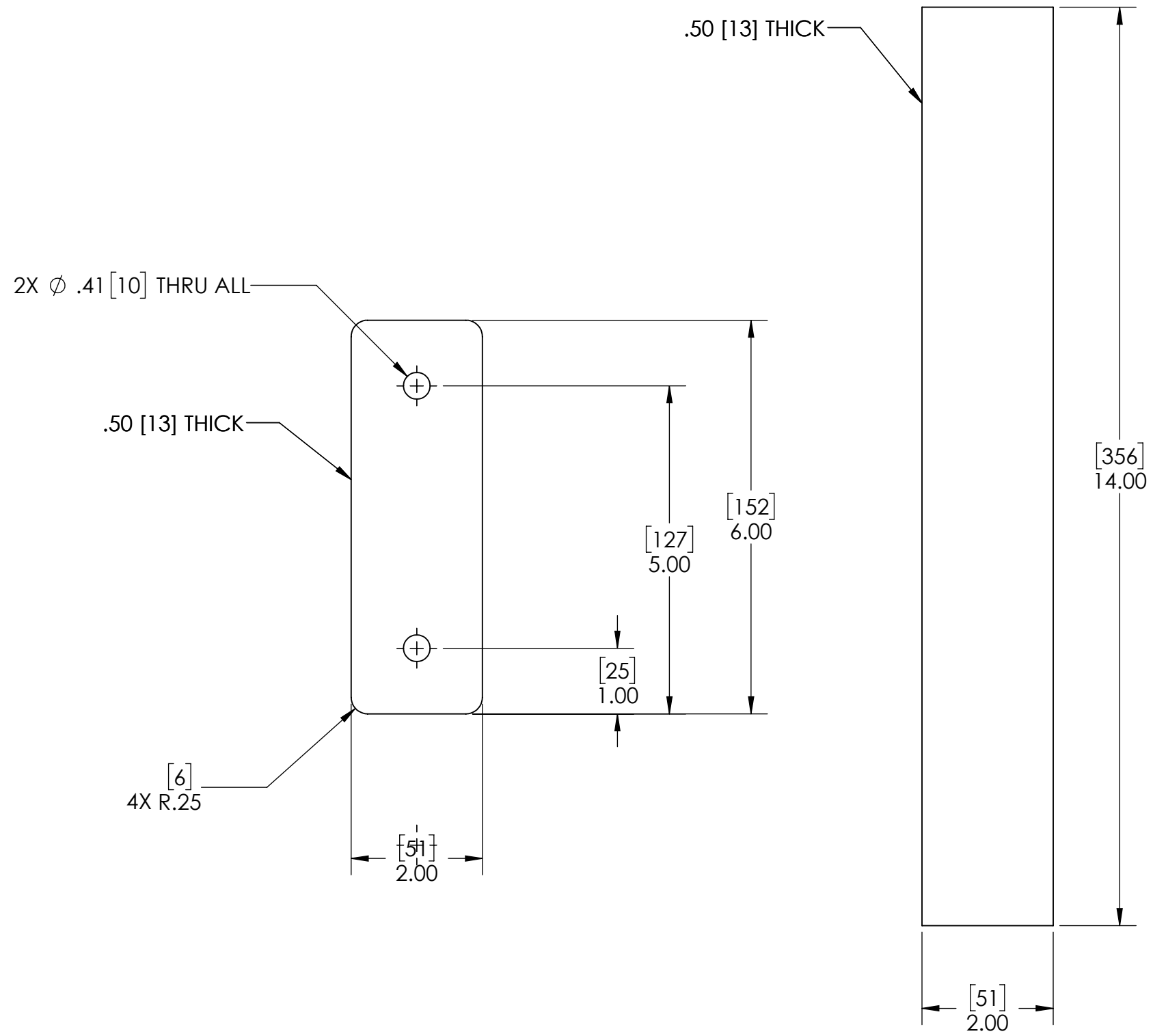


[MILLIMETERS]  
INCHES



PIPE SUPPORT SHOWN TO SCALE. HOWEVER, CONTRACTOR SHOULD PROTOTYPE AND FIELD TEST FIRST ARTICLE BEFORE FABRICATING REMAINING PIPE SUPPORTS.

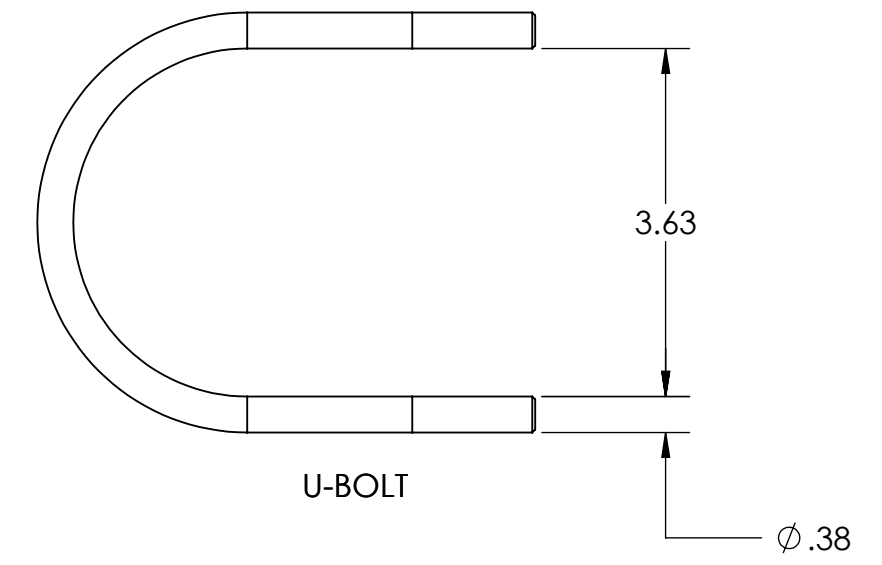
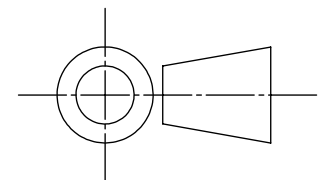
RELEASE FOR FABRICATION			
NAME _____		SIGNATURE _____	
DATE _____		COMPANY _____	
APPROVALS	DATE	<b>USS, LLC</b> PHONE: (260) 693-1172 FAX: (260) 693-1178 WEB SITE: WWW.USSPECIALISTS.COM <b>USS27.5(14)-20x20-20x32-48.75D</b> <b>HPV(3x2)[5]</b> <b>PIPE SUPPORT</b>	
DRAWN	08-19-24		
CHECKED	08-19-24		
APPROVED	08-19-24		
SHEET 5 OF 7		SCALE: 1:4	SIZE: B
<small>THE INFORMATION ON THIS DRAWING IS PROPRIETARY AND IS NOT TO BE REVEALED TO THIRD PARTIES WITHOUT WRITTEN CONSENT OF A CORPORATE OFFICER OF USS, LLC.</small>			



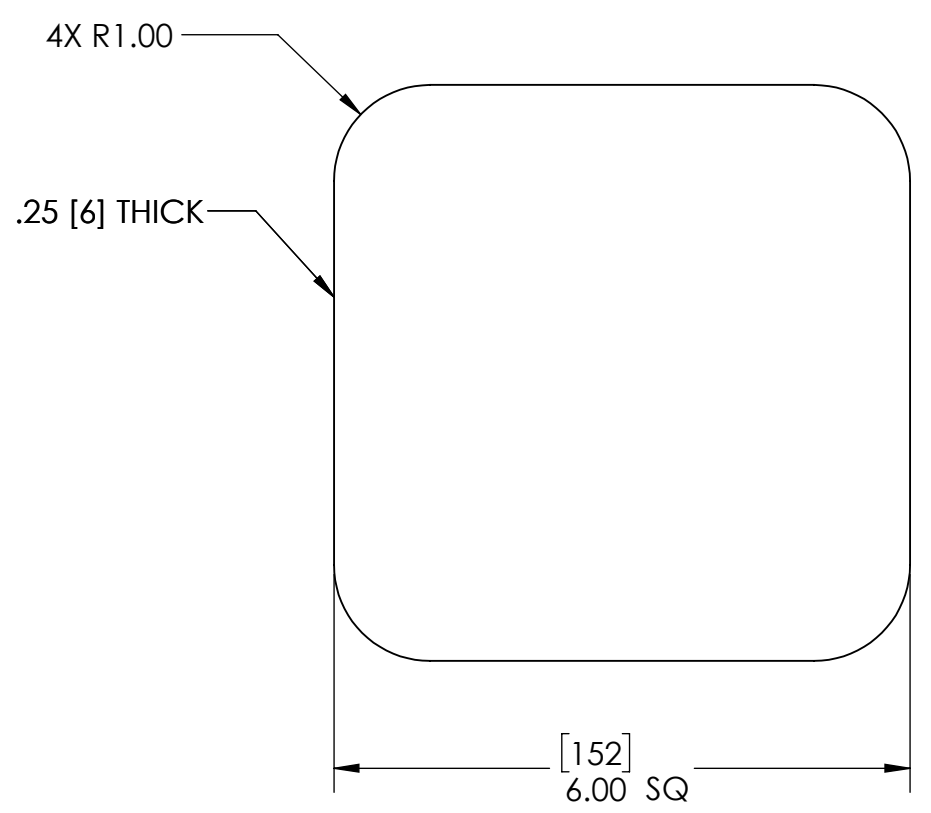
CROSSBAR

UPRIGHT

[MILLIMETERS]  
INCHES



U-BOLT



BASE PLATE

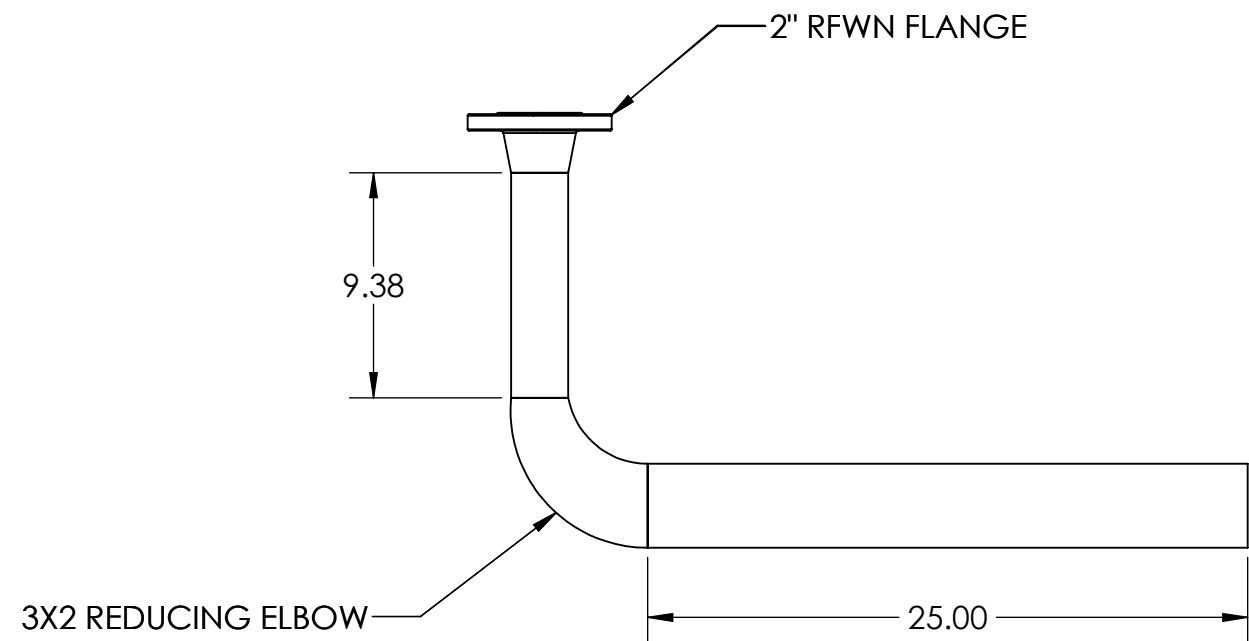
STEEL



Utility Systems Specialists

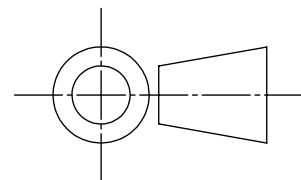
APPROVALS	DATE
DRAWN DLL	08-19-24
CHECKED DLL	08-19-24
APPROVED CDM	08-19-24
SHEET 6 OF 7	
SCALE: 1:2	SIZE: B

**USS, LLC**  
 PHONE: (260) 693-1172 FAX: (260) 693-1178  
 WEB SITE: WWW.USSPECIALISTS.COM  
**USS27.5(14)-20x20-20x32-48.75D**  
**HPV(3x2)[5]**  
**PIPE SUPPORT PARTS**  
 THE INFORMATION ON THIS DRAWING IS PROPRIETARY AND IS NOT TO BE REVEALED TO THIRD PARTIES WITHOUT WRITTEN CONSENT OF A CORPORATE OFFICER OF USS, LLC.



STACK-UP COMPONENTS SHOWN TO SCALE. HOWEVER, CONTRACTOR SHOULD PROTOTYPE AND FIELD TEST FIRST ARTICLE BEFORE FABRICATING REMAINING STACK-UPS.

[MILLIMETERS]  
INCHES



APPROVALS	DATE
DRAWN DLL	08-19-24
CHECKED DLL	08-19-24
APPROVED CDM	08-19-24
SHEET 7 OF 7	
SCALE: 1:8	SIZE: B

**USS, LLC**  
 PHONE: (260) 693-1172 FAX: (260) 693-1178  
 WEB SITE: WWW.USSPECIALISTS.COM  
**USS27.5(14)-20x20-20x32-48.75D**  
**HPV(3x2)[5]**  
**STACK-UP**  
THE INFORMATION ON THIS DRAWING IS PROPRIETARY AND IS NOT TO BE REVEALED TO THIRD PARTIES WITHOUT WRITTEN CONSENT OF A CORPORATE OFFICER OF USS, LLC.

Utility Systems Specialists