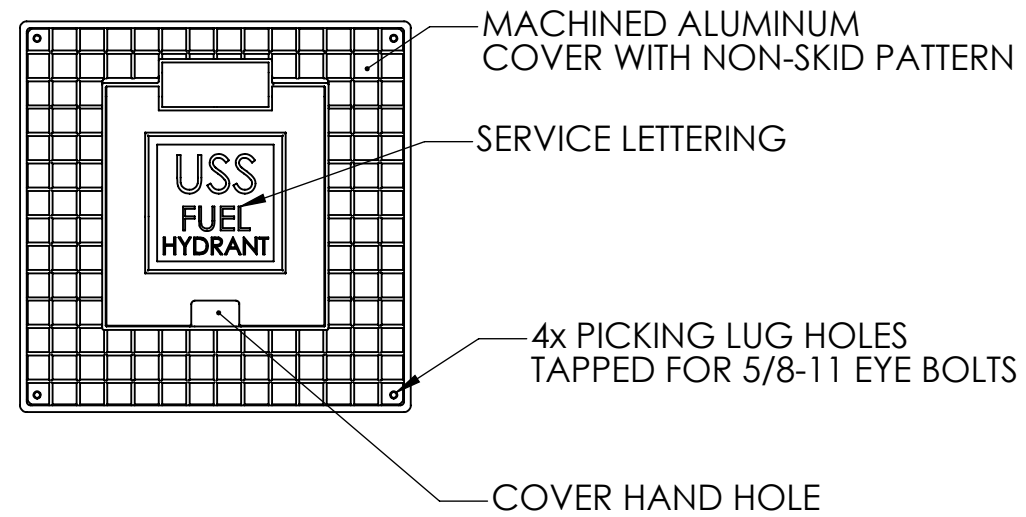
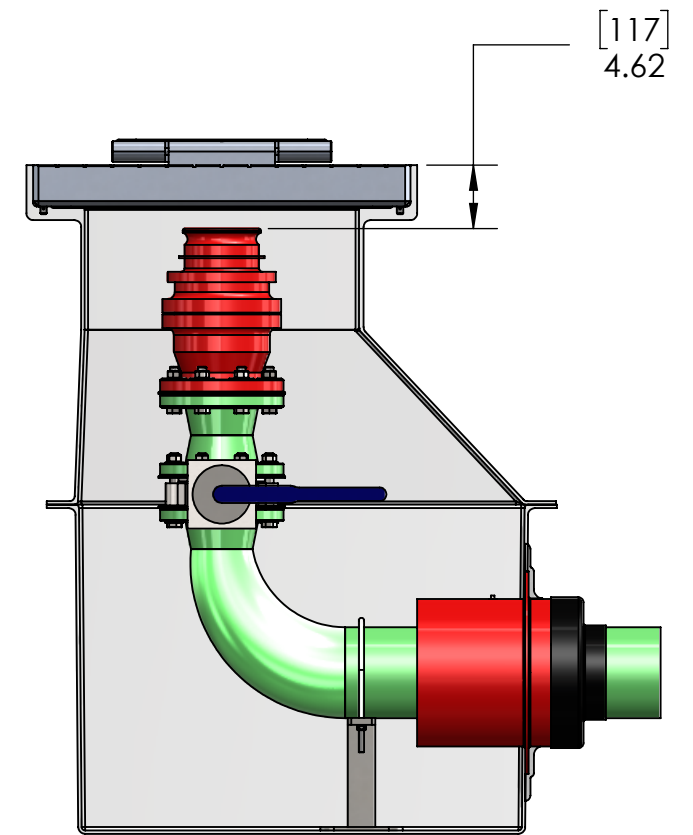


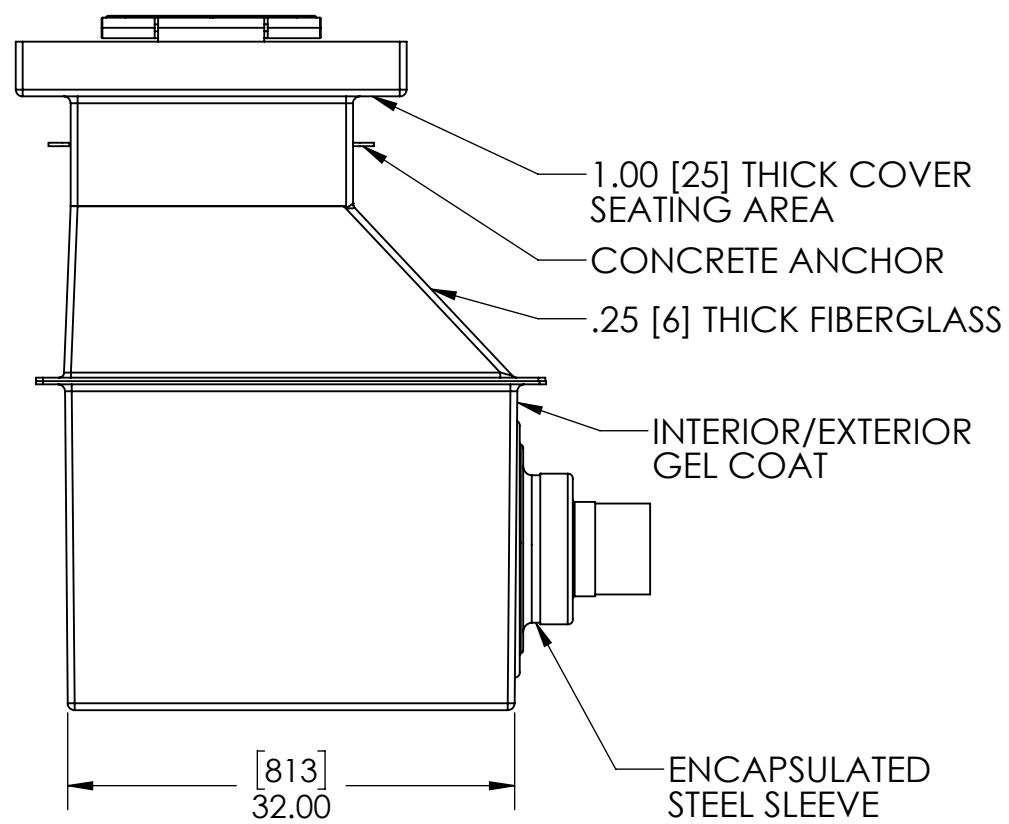
TOP VIEW



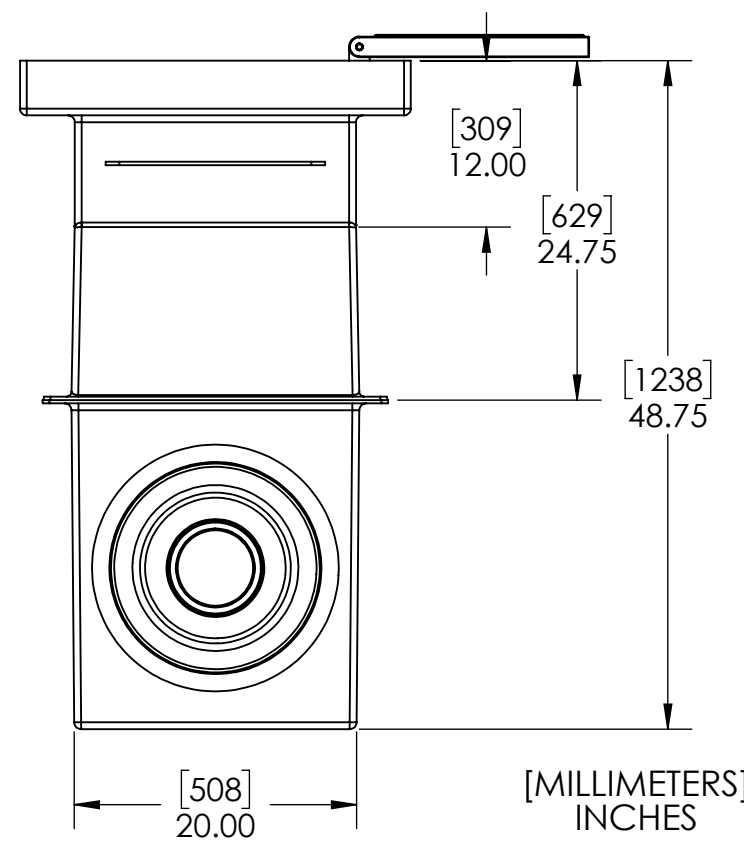
PLAN VIEW



FRONT CUT VIEW

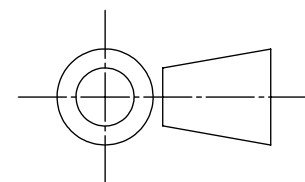


FRONT VIEW



SIDE VIEW

[MILLIMETERS]  
INCHES



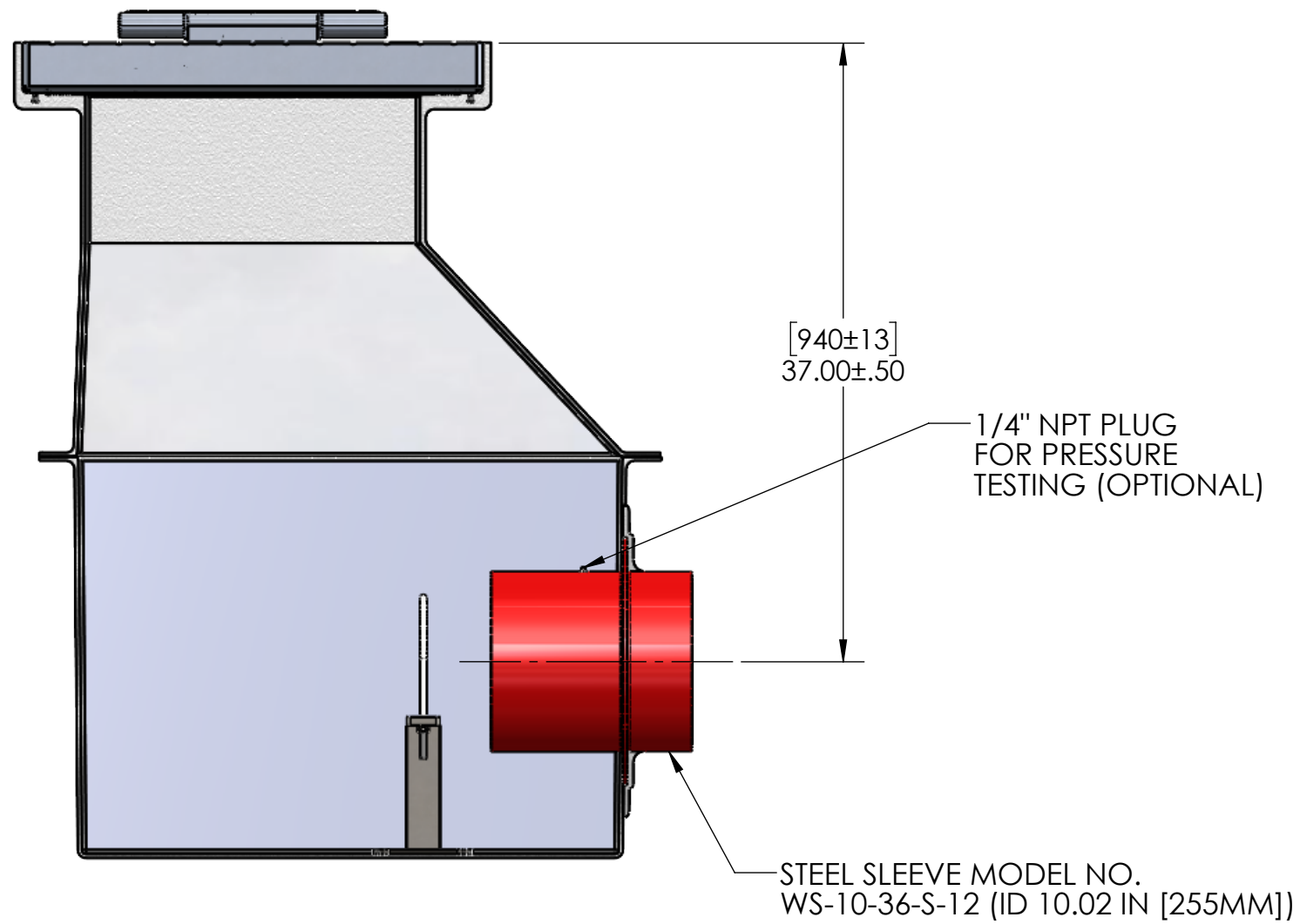
INTERNAL COMPONENTS SHOWN FOR REFERENCE.  
NO INTERNAL COMPONENTS PROVIDED.



APPROVALS	DATE
DRAWN DLL	09-03-24
CHECKED DLL	09-03-24
APPROVED CDM	09-03-24
SHEET 1 OF 7	

SCALE: 1:14 SIZE: B

**USS, LLC**  
PHONE: (260) 693-1172 FAX: (260) 693-1178  
WEB SITE: WWW.USSPECIALISTS.COM  
**USS27.5(14)-20x20-20x32-48.75D**  
**FHSA(6x4)[10]**  
**3 VIEW, PLAN, CUT**  
THE INFORMATION ON THIS DRAWING IS PROPRIETARY AND IS NOT TO BE REVEALED TO THIRD PARTIES WITHOUT WRITTEN CONSENT OF A CORPORATE OFFICER OF USS, LLC.



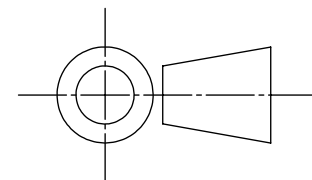
QUANTITY \_\_\_\_\_

**RELEASE FOR FABRICATION**

NAME \_\_\_\_\_ SIGNATURE \_\_\_\_\_

DATE \_\_\_\_\_ COMPANY \_\_\_\_\_

[MILLIMETERS]  
INCHES



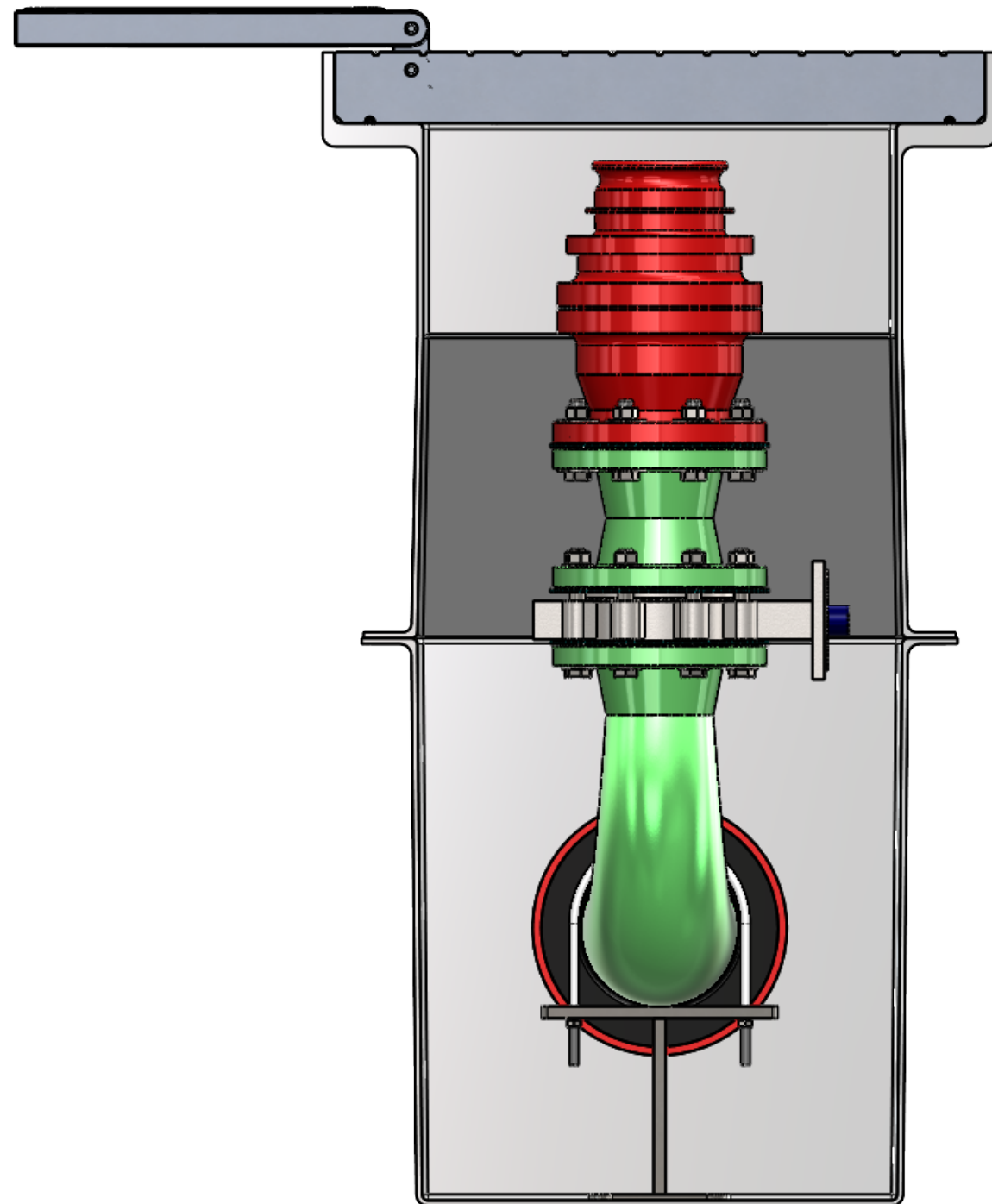
APPROVALS	DATE
DRAWN DLL	09-03-24
CHECKED DLL	09-03-24
APPROVED CDM	09-03-24
SHEET 2 OF 7	
SCALE: 1:10	SIZE: B

**USS, LLC**  
PHONE: (260) 693-1172 FAX: (260) 693-1178  
WEB SITE: WWW.USSPECIALISTS.COM

**USS27.5(14)-20x20-20x32-48.75D**  
**FHSA(6x4)[10]**  
**SUBMITTAL**

THE INFORMATION ON THIS DRAWING IS PROPRIETARY AND IS NOT TO BE REVEALED TO THIRD PARTIES WITHOUT WRITTEN CONSENT OF A CORPORATE OFFICER OF USS, LLC.

EMPTY PIT: 416 LB [189 KG]

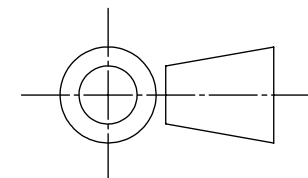


INTERNAL COMPONENTS SHOWN FOR REFERENCE.  
NO INTERNAL COMPONENTS PROVIDED.

**RELEASE FOR FABRICATION**

NAME \_\_\_\_\_ SIGNATURE \_\_\_\_\_  
DATE \_\_\_\_\_ COMPANY \_\_\_\_\_

[MILLIMETERS]  
INCHES

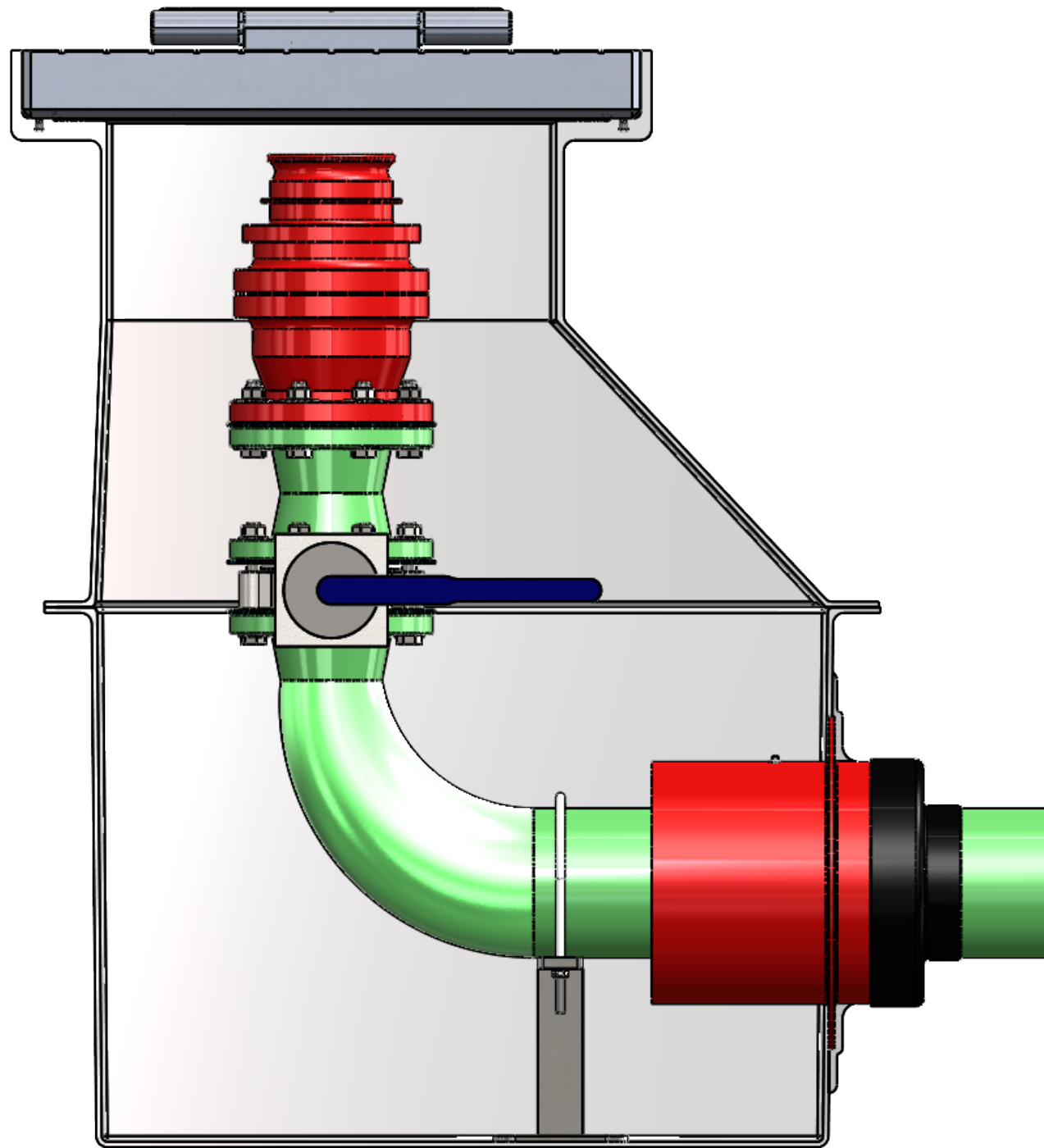


APPROVALS	DATE
DRAWN DLL	09-03-24
CHECKED DLL	09-03-24
APPROVED CDM	09-03-24
SHEET 3 OF 7	

**USS, LLC**  
PHONE: (260) 693-1172 FAX: (260) 693-1178  
WEB SITE: WWW.USSPECIALISTS.COM  
**USS27.5(14)-20x20-20x32-48.75D**  
**FHSA(6x4)[10]**  
**SIDE CUT VIEW**

SCALE: 1:7 SIZE: B

THE INFORMATION ON THIS DRAWING IS PROPRIETARY AND IS NOT TO BE REVEALED TO THIRD PARTIES WITHOUT WRITTEN CONSENT OF A CORPORATE OFFICER OF USS, LLC.



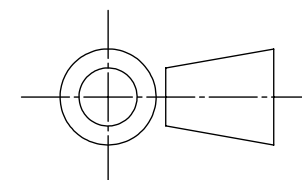
INTERNAL COMPONENTS SHOWN FOR REFERENCE.  
NO INTERNAL COMPONENTS PROVIDED.

**RELEASE FOR FABRICATION**

NAME \_\_\_\_\_ SIGNATURE \_\_\_\_\_

DATE \_\_\_\_\_ COMPANY \_\_\_\_\_

[MILLIMETERS]  
INCHES

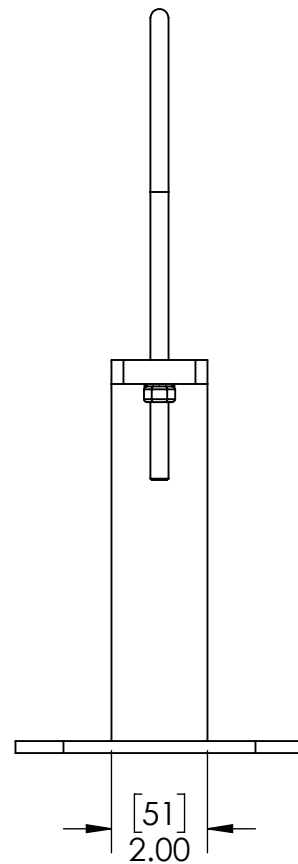
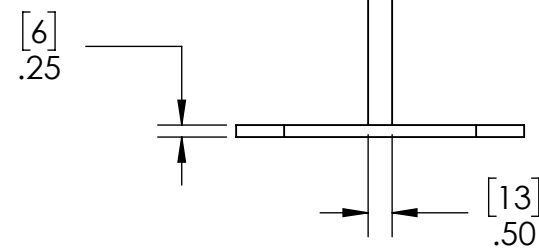
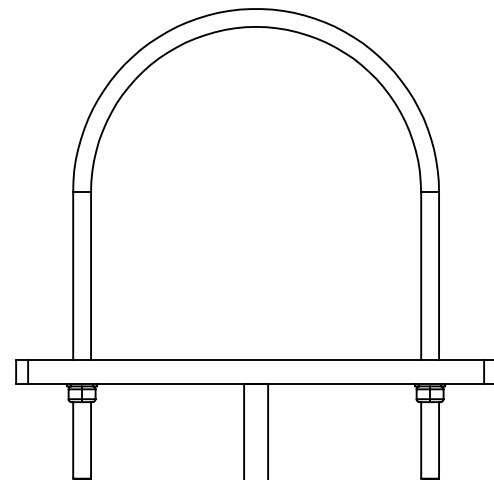
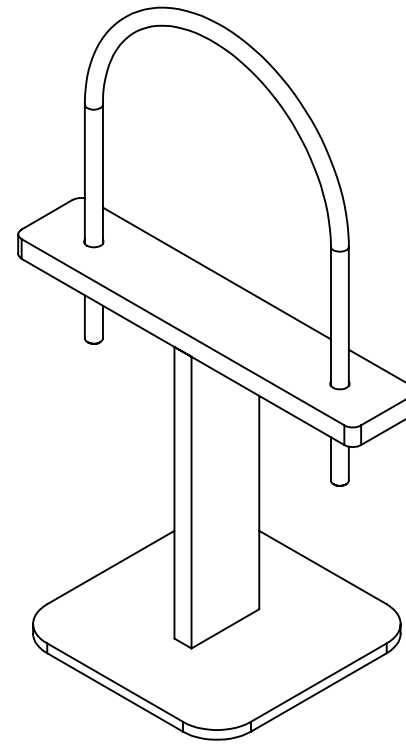
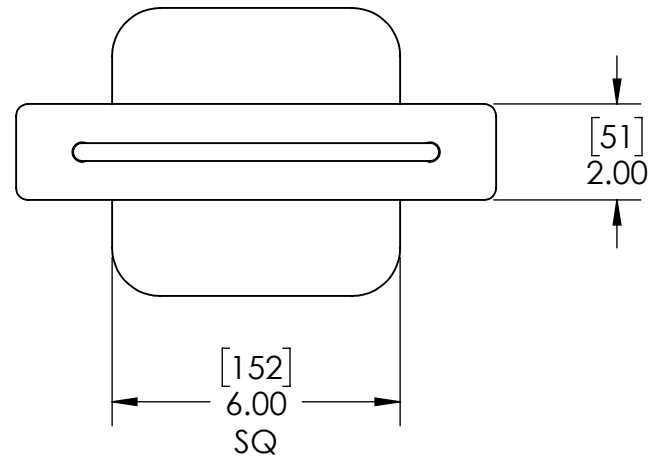


APPROVALS	DATE
DRAWN DLL	09-03-24
CHECKED DLL	09-03-24
APPROVED CDM	09-03-24
SHEET 4 OF 7	
SCALE: 1:7	SIZE: B

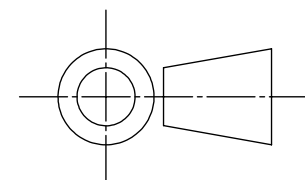
**USS, LLC**  
PHONE: (260) 693-1172 FAX: (260) 693-1178  
WEB SITE: WWW.USSPECIALISTS.COM

**USS27.5(14)-20x20-20x32-48.75D**  
**FHSA(6x4)[10]**  
**FRONT CUT VIEW**

THE INFORMATION ON THIS DRAWING IS PROPRIETARY AND IS NOT TO BE REVEALED TO THIRD PARTIES WITHOUT WRITTEN CONSENT OF A CORPORATE OFFICER OF USS, LLC.



[MILLIMETERS]  
INCHES



INTERNAL COMPONENTS SHOWN FOR REFERENCE.  
NO INTERNAL COMPONENTS PROVIDED.



APPROVALS	DATE
DRAWN DLL	09-03-24
CHECKED DLL	09-03-24
APPROVED CDM	09-03-24
SHEET 5 OF 7	
SCALE: 1:4	SIZE: B

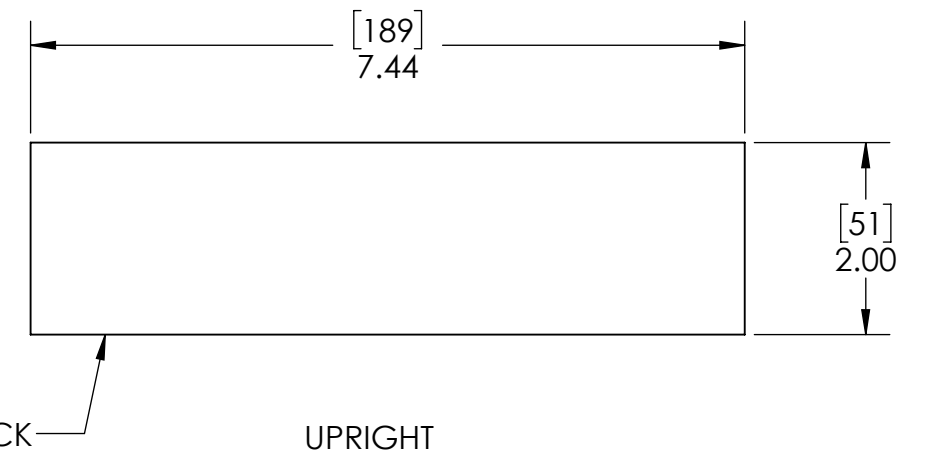
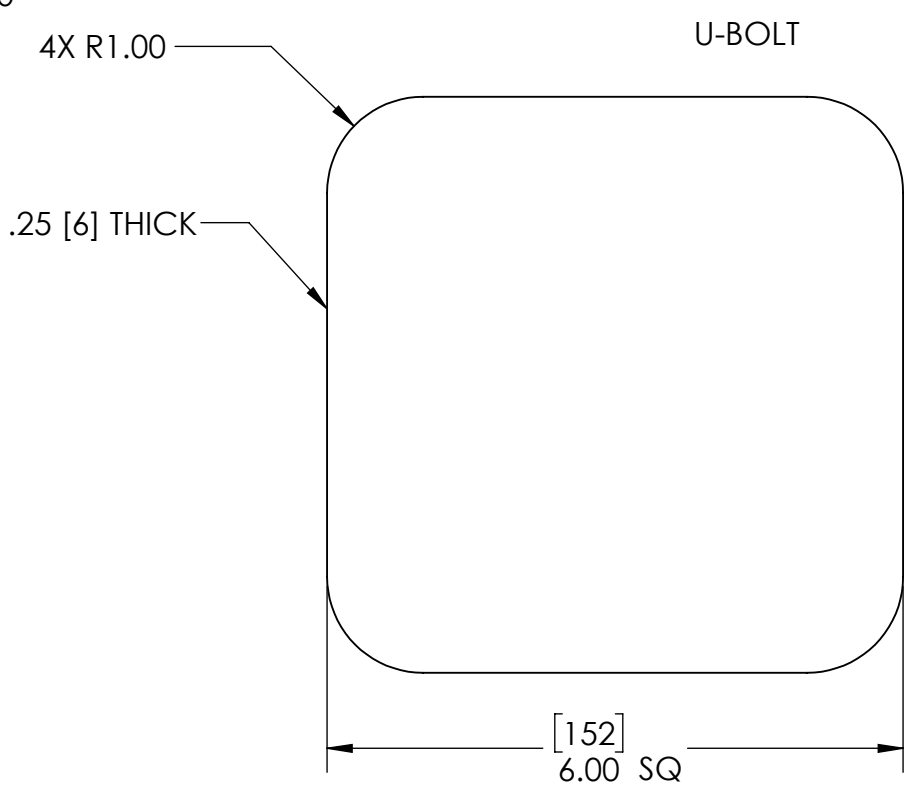
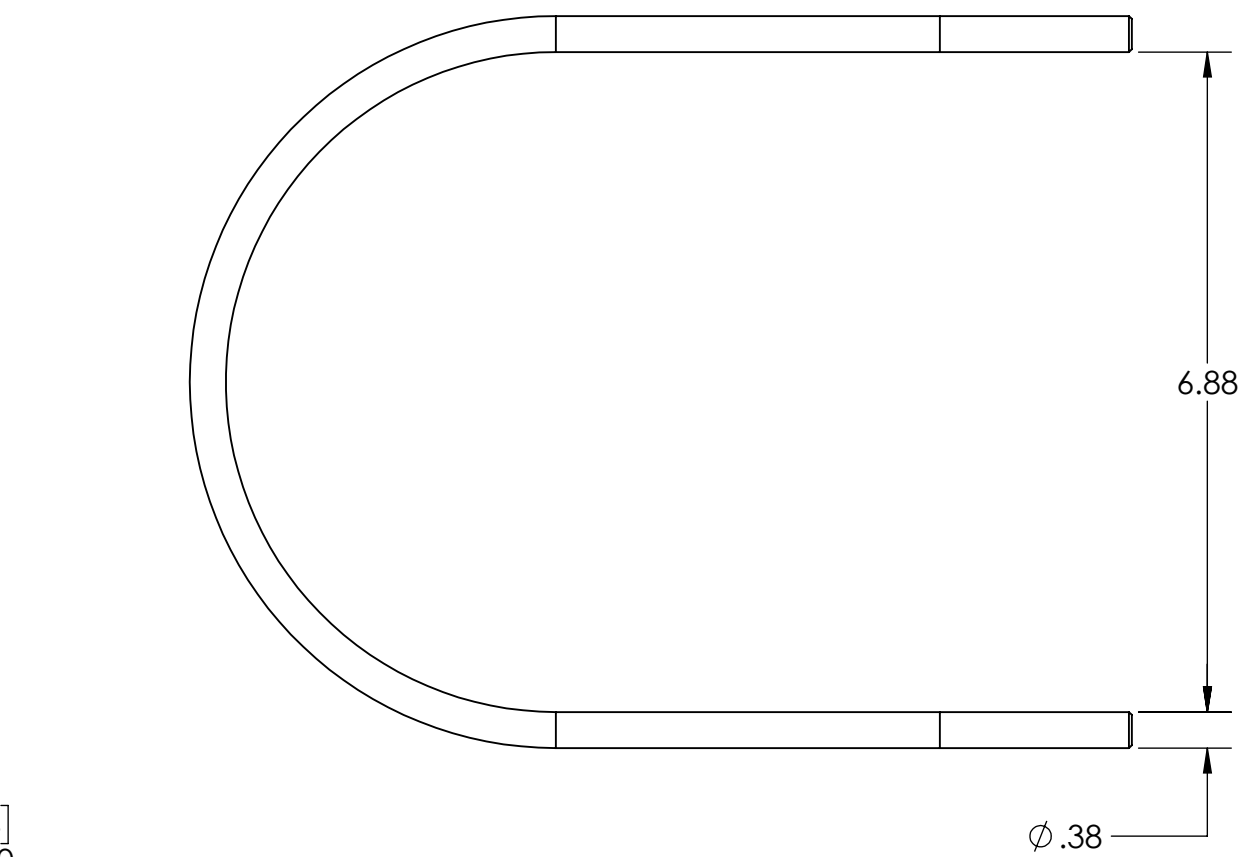
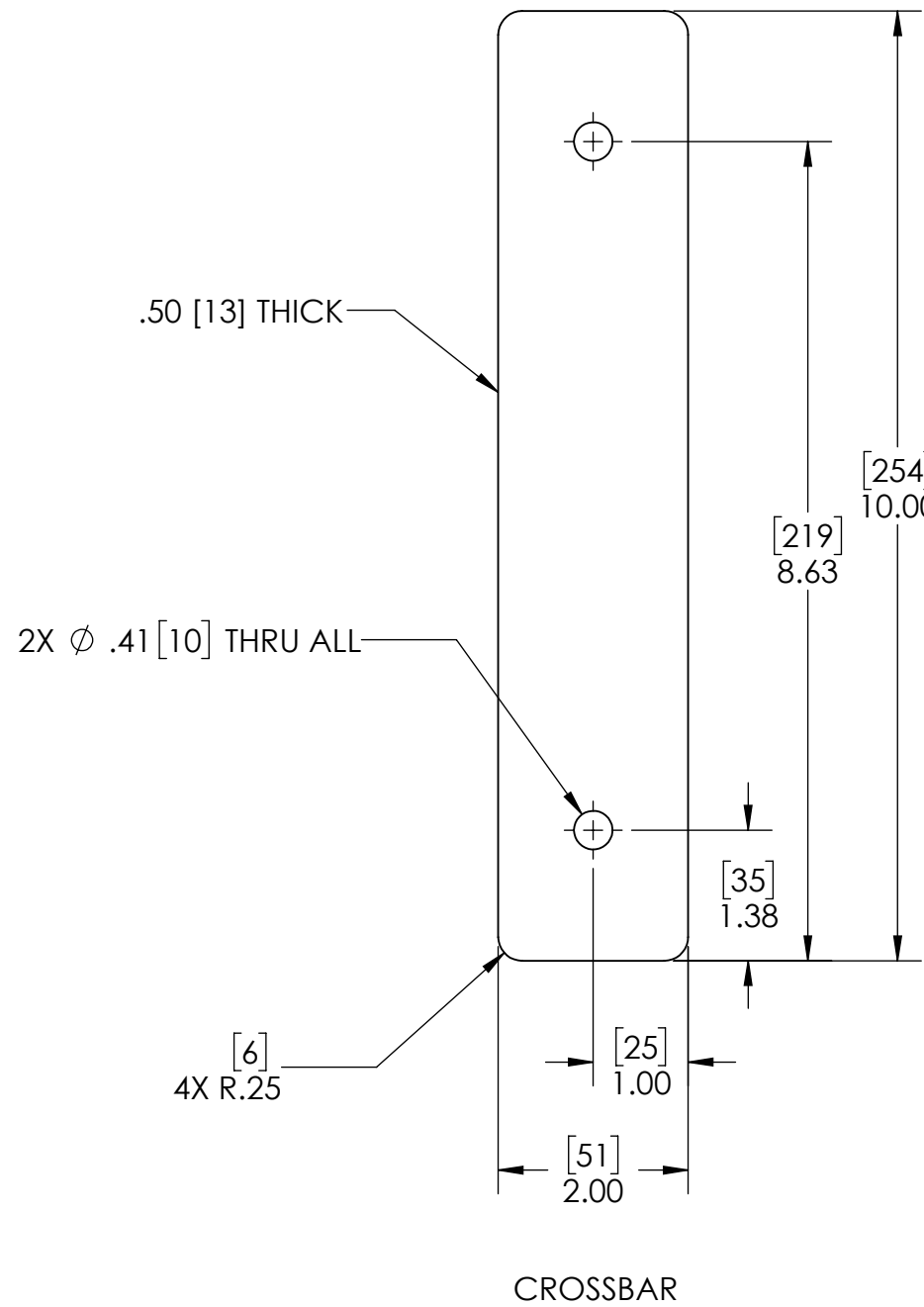
**USS, LLC**  
 PHONE: (260) 693-1172 FAX: (260) 693-1178  
 WEB SITE: WWW.USSPECIALISTS.COM

**USS27.5(14)-20x20-20x32-48.75D**

**FHSA(6x4)[10]**

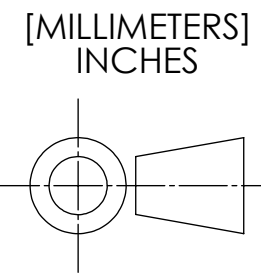
**PIPE SUPPORT**

THE INFORMATION ON THIS DRAWING IS PROPRIETARY AND IS NOT TO BE REVEALED TO THIRD PARTIES WITHOUT WRITTEN CONSENT OF A CORPORATE OFFICER OF USS, LLC.

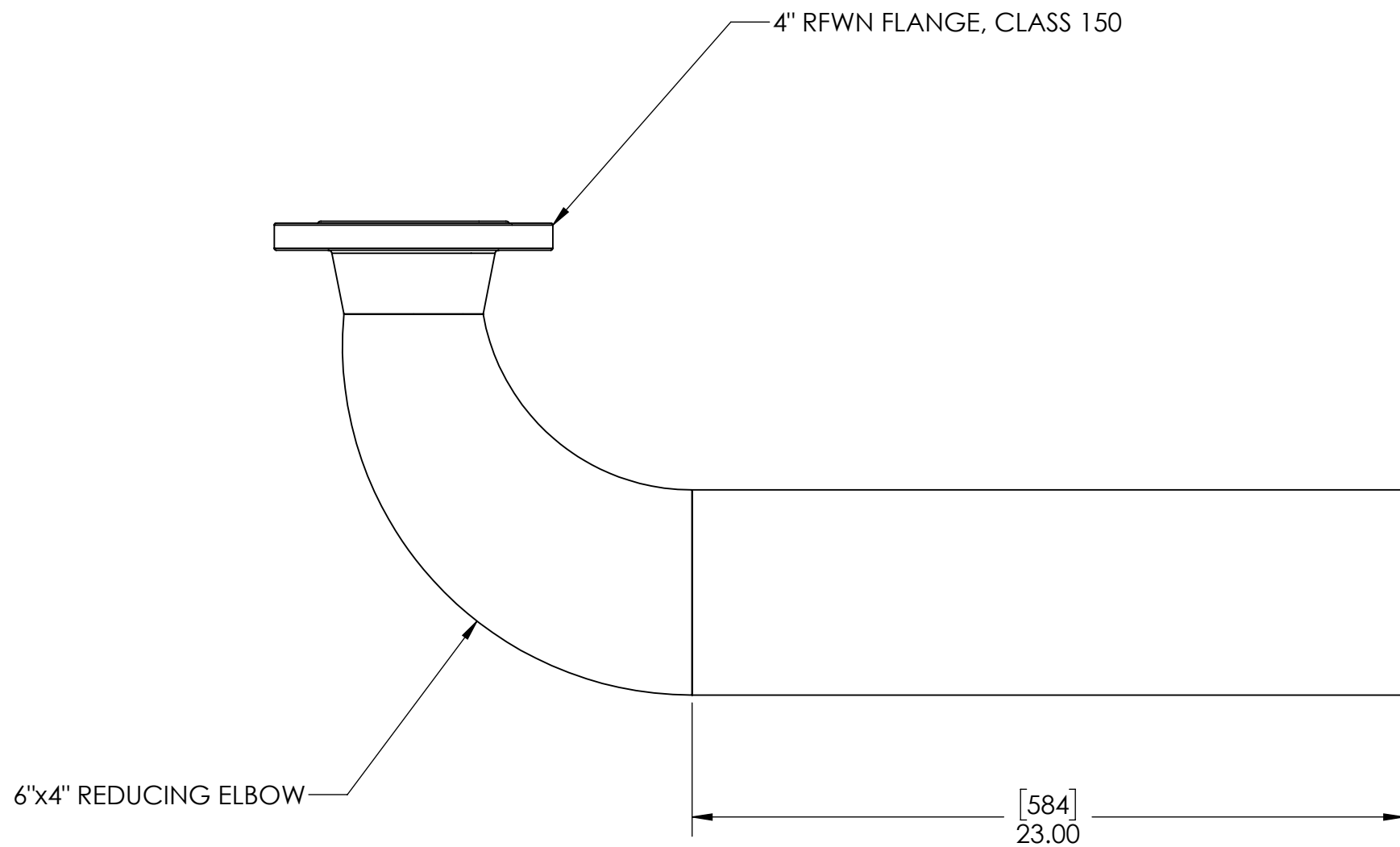


PIPE SUPPORT SHOWN TO SCALE. HOWEVER, CONTRACTOR SHOULD PROTOTYPE AND FIELD TEST FIRST ARTICLE BEFORE FABRICATING REMAINING PIPE SUPPORTS.

STEEL



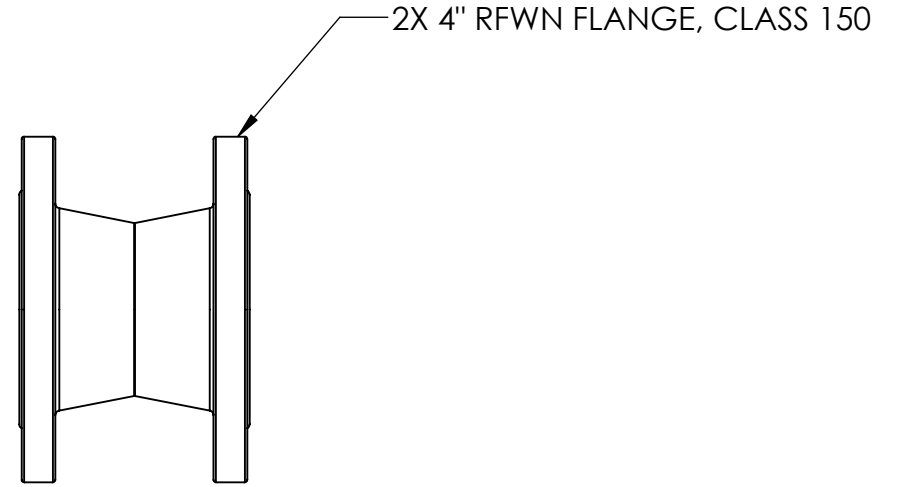
UNLESS OTHERWISE SPECIFIED DIMENSIONS ARE IN INCHES TOLERANCES ARE: FRACTIONS DECIMALS ANGLES $\pm \frac{1}{16}$ .XX $\pm$ .01 $\pm 1^\circ$ .XXX $\pm$ .003	APPROVALS	DATE	<b>USS, LLC</b> PHONE: (260) 693-1172 FAX: (260) 693-1178 WEB SITE: WWW.USSPECIALISTS.COM <b>USS27.5(14)-20x20-20x32-48.75D</b> <b>PIPE SUPPORT PARTS</b>
	DRAWN DLL	09-03-24	
	CHECKED DLL	09-03-24	
MATERIAL	APPROVED CDM	09-03-24	<b>PIPE SUPPORT PARTS</b>
FINISH	SHEET 6 OF 7		<b>DRAWING NO.</b>
	SCALE: 1:1	SIZE: B	THE INFORMATION ON THIS DRAWING IS PROPRIETARY AND IS NOT TO BE REVEALED TO THIRD PARTIES WITHOUT WRITTEN CONSENT OF A CORPORATE OFFICER OF USS, LLC.



6"x4" REDUCING ELBOW

4" RFWN FLANGE, CLASS 150

[584]  
23.00

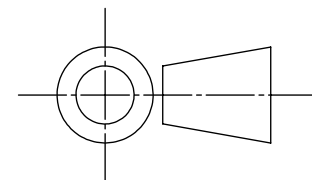


SPOOL PIECE

2X 4" RFWN FLANGE, CLASS 150

**STACK-UP COMPONENTS SHOWN TO SCALE. HOWEVER, CONTRACTOR SHOULD PROTOTYPE AND FIELD TEST FIRST ARTICLE BEFORE FABRICATING REMAINING STACK-UPS.**

[MILLIMETERS]  
INCHES



APPROVALS	DATE
DRAWN DLL	09-03-24
CHECKED DLL	09-03-24
APPROVED CDM	09-03-24
SHEET 7 OF 7	
SCALE: 1:5	SIZE: B

**USS, LLC**  
 PHONE: (260) 693-1172 FAX: (260) 693-1178  
 WEB SITE: WWW.USSPECIALISTS.COM  
**USS27.5(14)-20x20-20x32-48.75D**  
**FHSA(6x4)[10]**  
**STACK-UP**  
THE INFORMATION ON THIS DRAWING IS PROPRIETARY AND IS NOT TO BE REVEALED TO THIRD PARTIES WITHOUT WRITTEN CONSENT OF A CORPORATE OFFICER OF USS, LLC.

Utility Systems Specialists