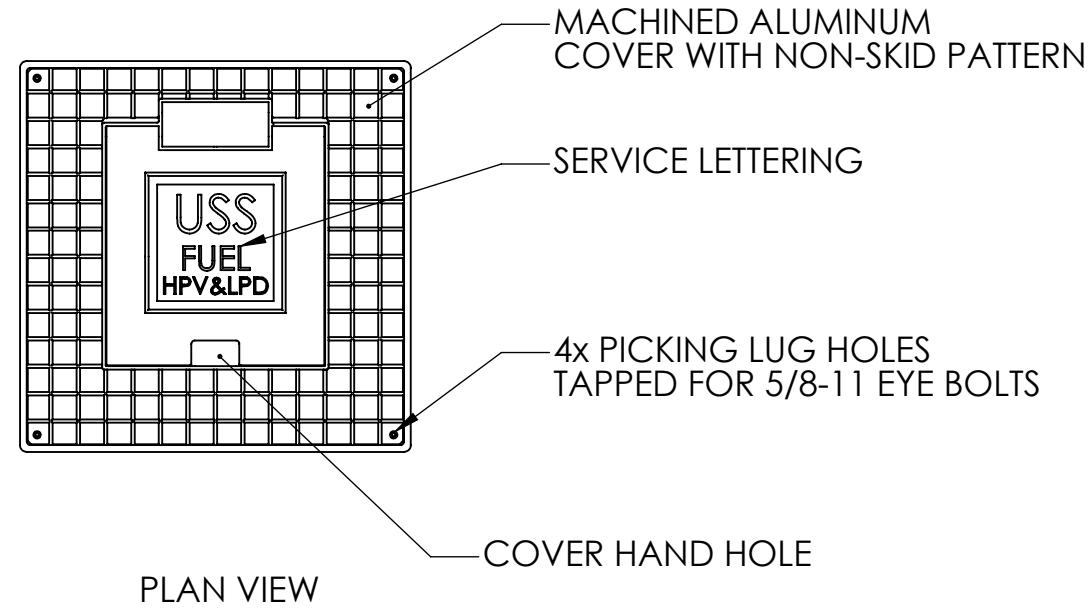
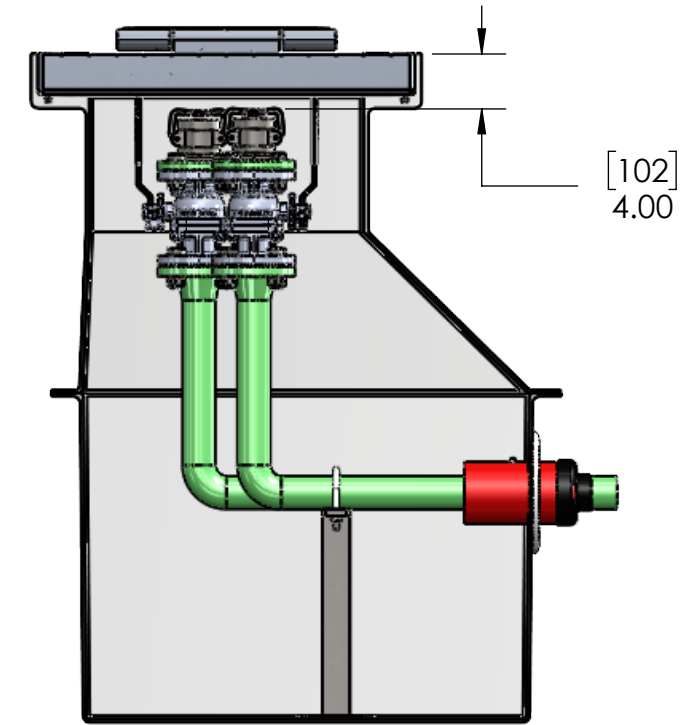


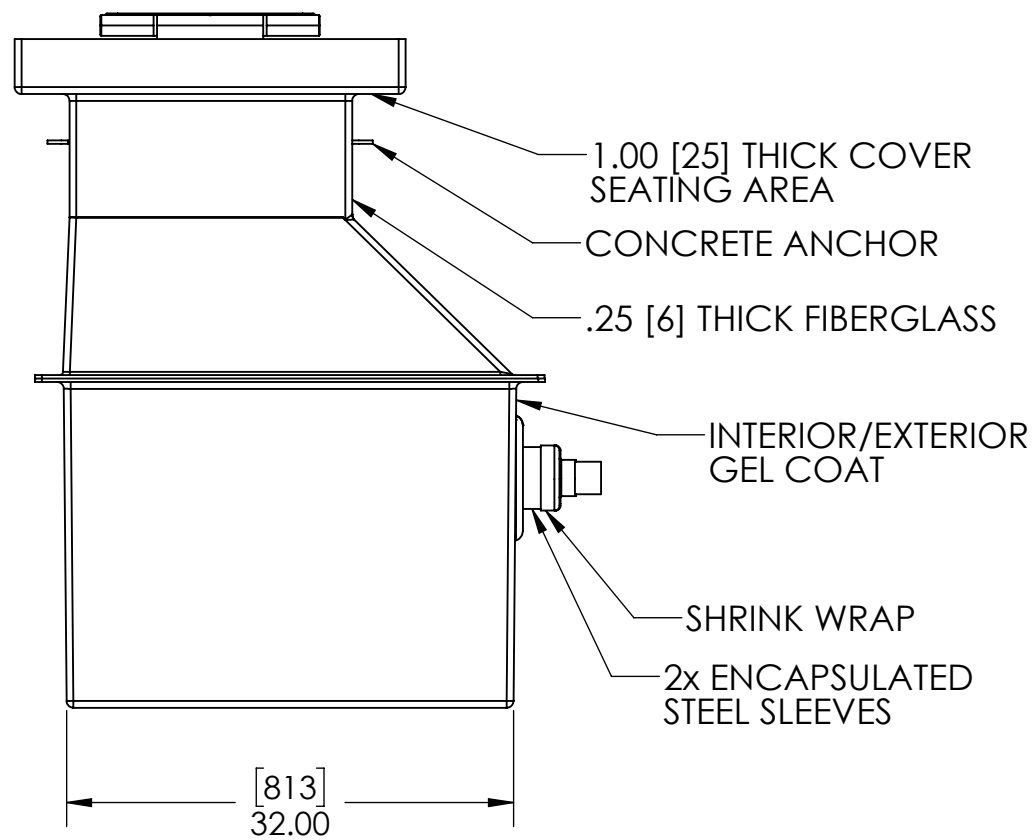
TOP VIEW



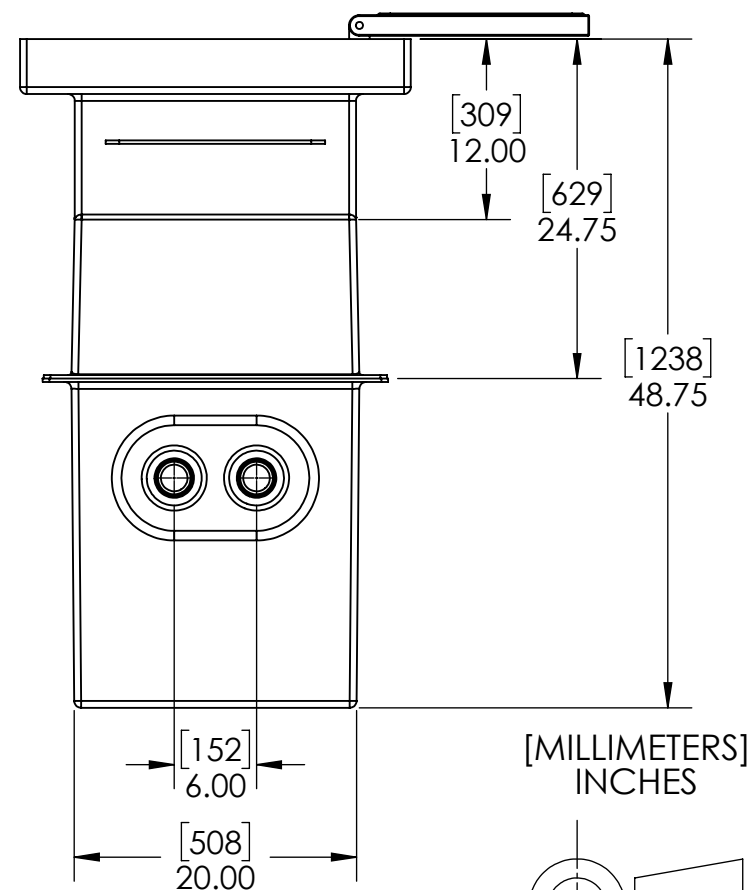
PLAN VIEW



FRONT CUT VIEW



FRONT VIEW



SIDE VIEW

INTERNAL COMPONENTS SHOWN FOR REFERENCE.  
NO INTERNAL COMPONENTS PROVIDED.

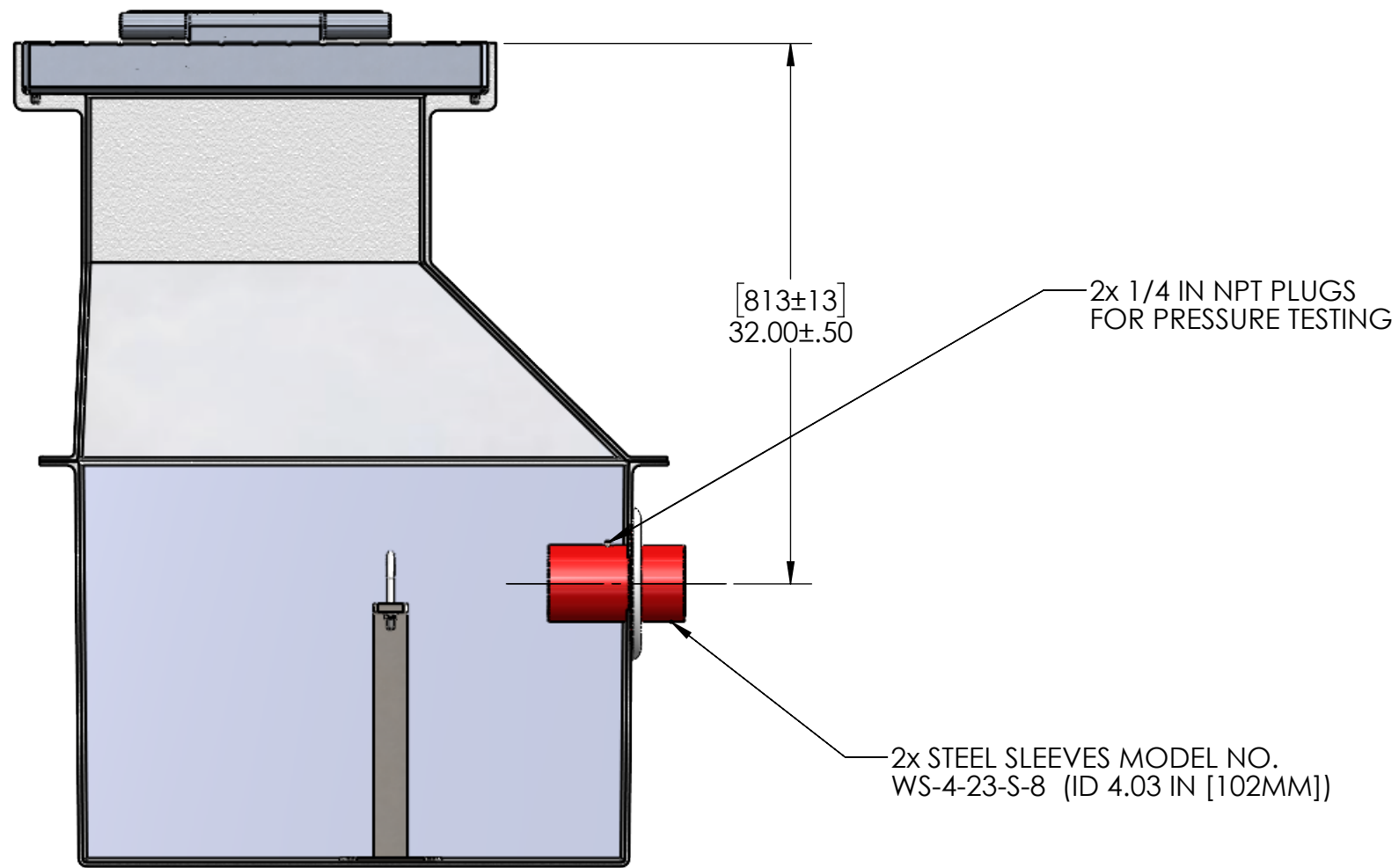


APPROVALS	DATE
DRAWN DLL	06-25-24
CHECKED DLL	06-25-24
APPROVED CDM	06-25-24
SHEET 1 OF 7	
SCALE: 1:14	SIZE: B

**USS, LLC**  
PHONE: (260) 693-1172 FAX: (260) 693-1178  
WEB SITE: WWW.USSPECIALISTS.COM

**USS27.5(14)-20x20-20x32-48.75D**  
**HPV&LPD(2)[4]**  
**3 VIEW, PLAN, CUT**

THE INFORMATION ON THIS DRAWING IS PROPRIETARY AND IS NOT TO BE REVEALED TO THIRD PARTIES WITHOUT WRITTEN CONSENT OF A CORPORATE OFFICER OF USS, LLC.



QUANTITY \_\_\_\_\_

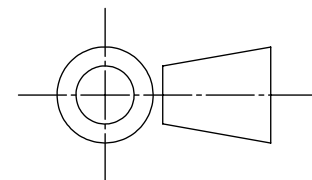
**RELEASE FOR FABRICATION**

\_\_\_\_\_  
NAME SIGNATURE

\_\_\_\_\_  
DATE COMPANY

EMPTY PIT: 397 LB [180 KG]

[MILLIMETERS]  
INCHES

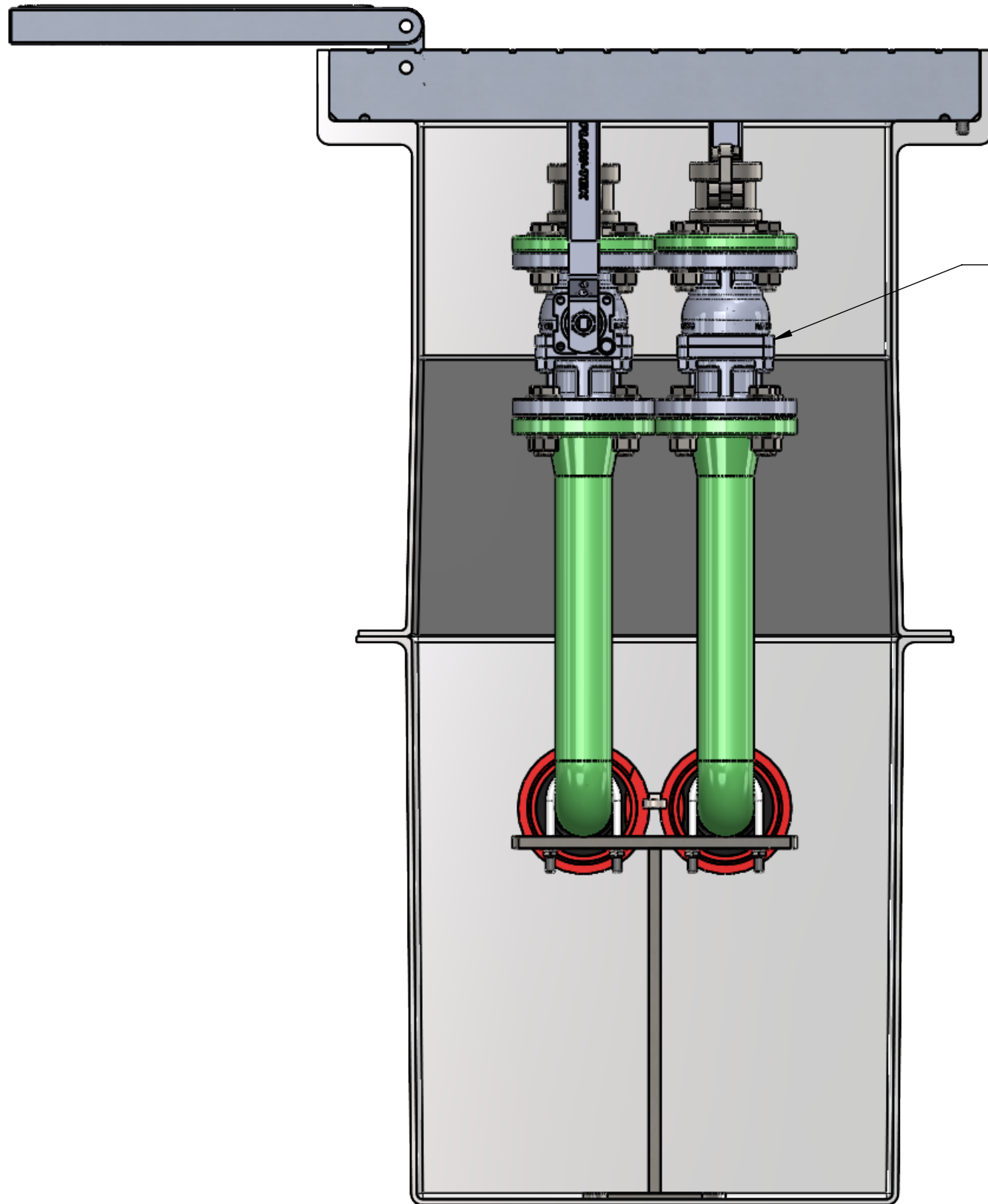


APPROVALS	DATE
DRAWN DLL	06-25-24
CHECKED DLL	06-25-24
APPROVED CDM	06-25-24
SHEET 2 OF 7	
SCALE: 1:10	SIZE: B

**USS, LLC**  
PHONE: (260) 693-1172 FAX: (260) 693-1178  
WEB SITE: WWW.USSPECIALISTS.COM

**USS27.5(14)-20x20-20x32-48.75D**  
**HPV&LPD(2)[4]**  
**SUBMITTAL**

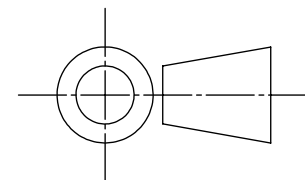
THE INFORMATION ON THIS DRAWING IS PROPRIETARY AND IS NOT TO BE REVEALED TO THIRD PARTIES WITHOUT WRITTEN CONSENT OF A CORPORATE OFFICER OF USS, LLC.



2" BALL VALVE, BRAY FLOTEK  
F-15 SERIES STAINLESS STEEL.

INTERNAL COMPONENTS SHOWN FOR REFERENCE.  
NO INTERNAL COMPONENTS PROVIDED.

[MILLIMETERS]  
INCHES



Utility Systems Specialists

**RELEASE FOR FABRICATION**

NAME \_\_\_\_\_ SIGNATURE \_\_\_\_\_

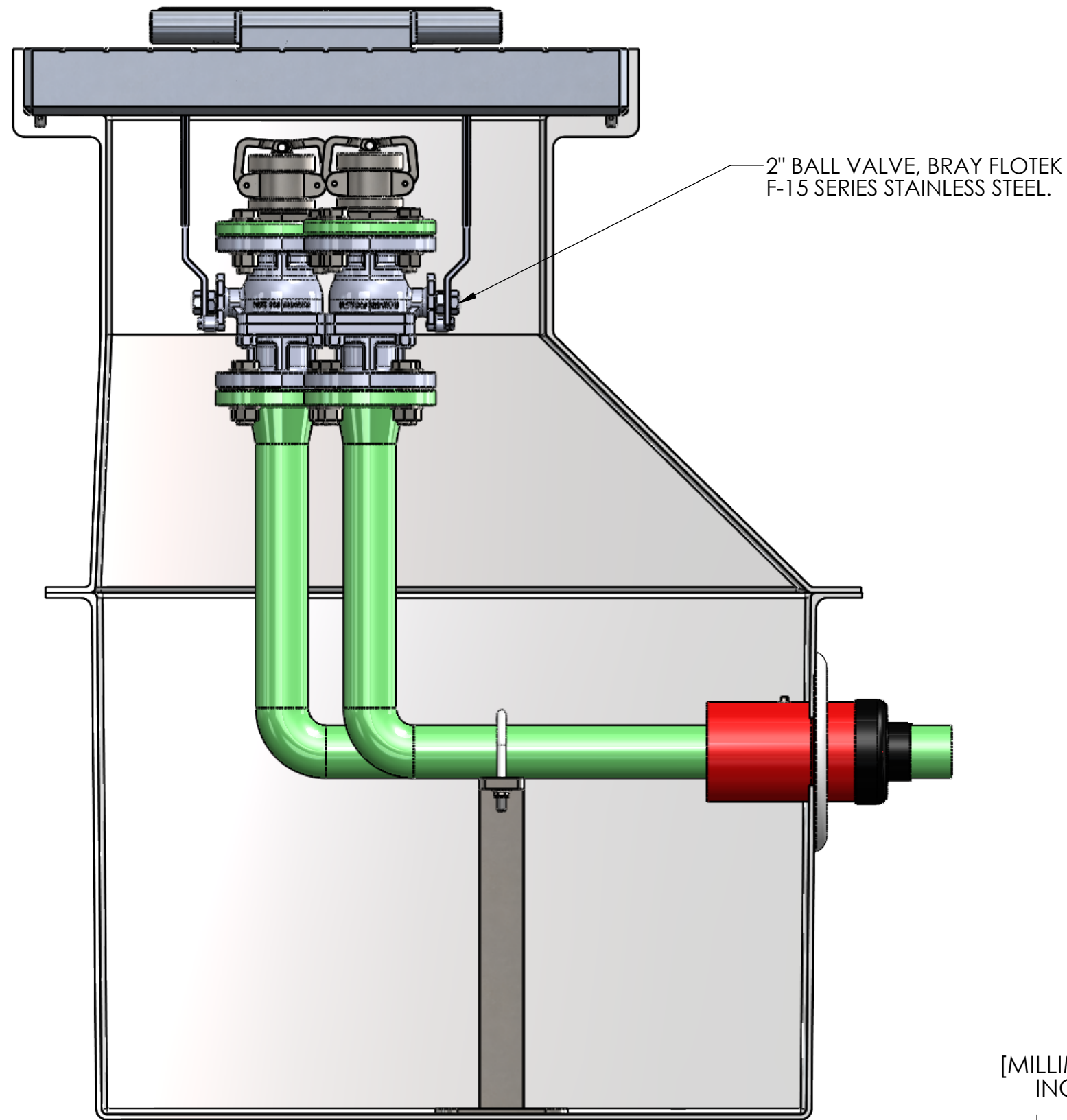
DATE \_\_\_\_\_ COMPANY \_\_\_\_\_

APPROVALS	DATE
DRAWN DLL	06-25-24
CHECKED DLL	06-25-24
APPROVED CDM	06-25-24

SHEET 3 OF 7

SCALE: 1:6 SIZE: B

**USS, LLC**  
PHONE: (260) 693-1172 FAX: (260) 693-1178  
WEB SITE: WWW.USSPECIALISTS.COM  
**USS27.5(14)-20x20-20x32-48.75D**  
**HPV&LPD(2)[4]**  
**SIDE CUT VIEW**  
THE INFORMATION ON THIS DRAWING IS PROPRIETARY AND IS NOT TO BE REVEALED TO THIRD PARTIES WITHOUT WRITTEN CONSENT OF A CORPORATE OFFICER OF USS, LLC.



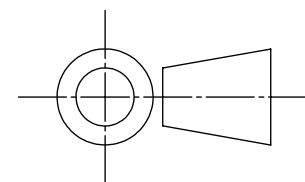
INTERNAL COMPONENTS SHOWN FOR REFERENCE.  
NO INTERNAL COMPONENTS PROVIDED.

**RELEASE FOR FABRICATION**

NAME \_\_\_\_\_ SIGNATURE \_\_\_\_\_

DATE \_\_\_\_\_ COMPANY \_\_\_\_\_

[MILLIMETERS]  
INCHES



APPROVALS	DATE
DRAWN DLL	06-25-24
CHECKED DLL	06-25-24
APPROVED CDM	06-25-24
SHEET 4 OF 7	
SCALE: 1:6	SIZE: B

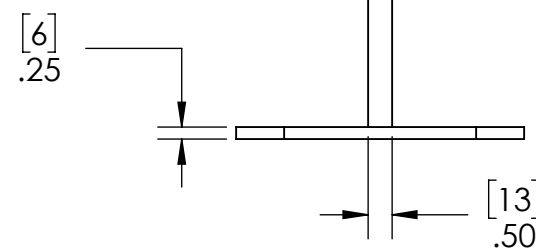
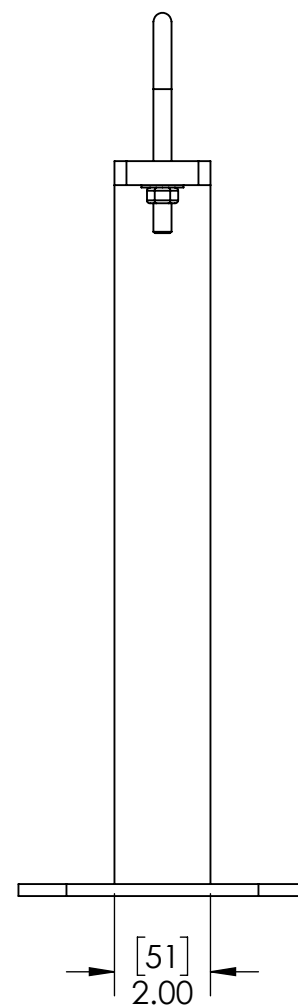
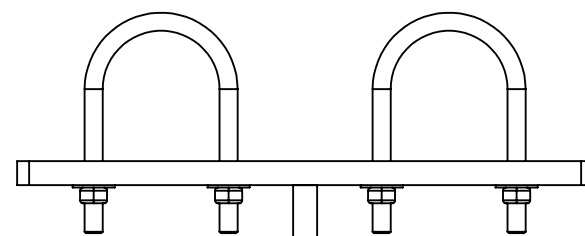
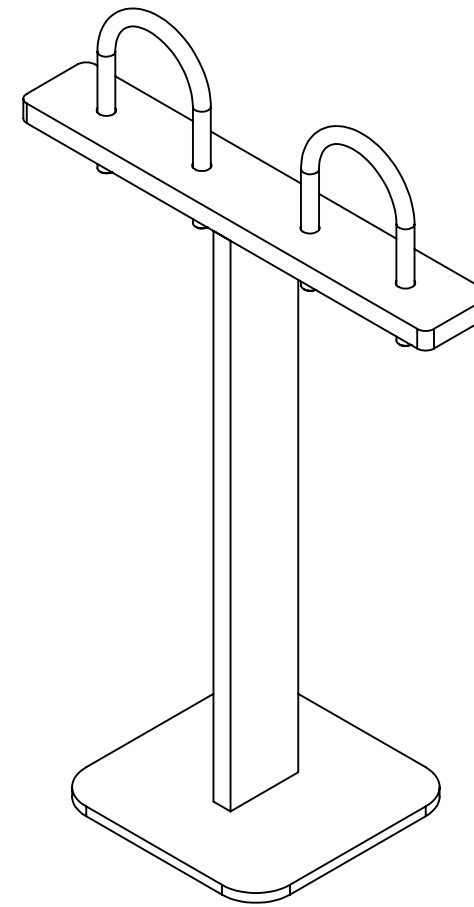
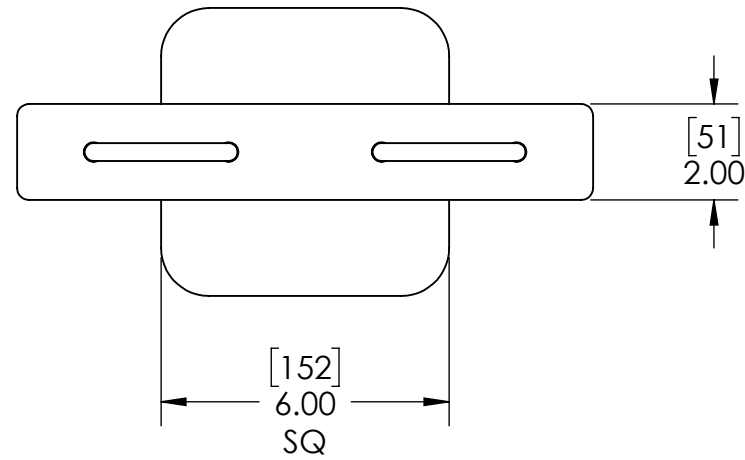
**USS, LLC**  
PHONE: (260) 693-1172 FAX: (260) 693-1178  
WEB SITE: WWW.USSPECIALISTS.COM

**USS27.5(14)-20x20-20x32-48.75D**

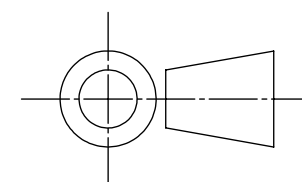
**HPV&LPD(2)[4]**

**FRONT CUT VIEW**

THE INFORMATION ON THIS DRAWING IS PROPRIETARY AND IS NOT TO BE REVEALED TO THIRD PARTIES WITHOUT WRITTEN CONSENT OF A CORPORATE OFFICER OF USS, LLC.



[MILLIMETERS]  
INCHES



PIPE STAND COMPONENTS SHOWN TO SCALE. HOWEVER, CONTRACTOR SHOULD PROTOTYPE AND FIELD TEST FIRST ARTICLE BEFORE FABRICATING REMAINING PIPE STANDS.

**RELEASE FOR FABRICATION**

NAME \_\_\_\_\_ SIGNATURE \_\_\_\_\_

DATE \_\_\_\_\_ COMPANY \_\_\_\_\_

APPROVALS	DATE
DRAWN DLL	06-25-24
CHECKED DLL	06-25-24
APPROVED CDM	06-25-24
SHEET 5 OF 7	

**USS, LLC**  
PHONE: (260) 693-1172 FAX: (260) 693-1178  
WEB SITE: WWW.USSPECIALISTS.COM

**USS27.5(14)-20x20-20x32-48.75D**

**HPV&LPD(2)[4]**

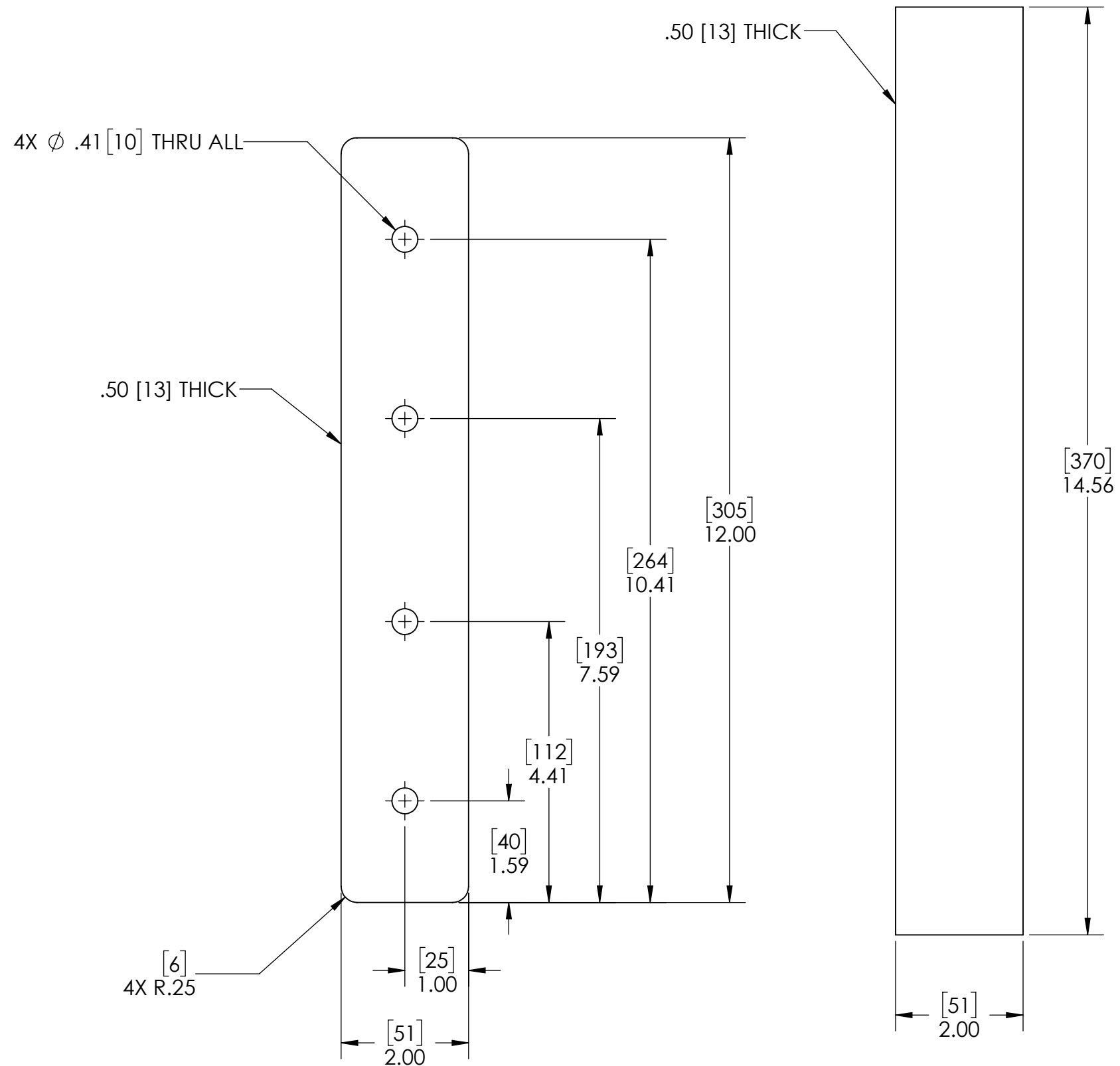
**PIPE SUPPORT**



Utility Systems Specialists

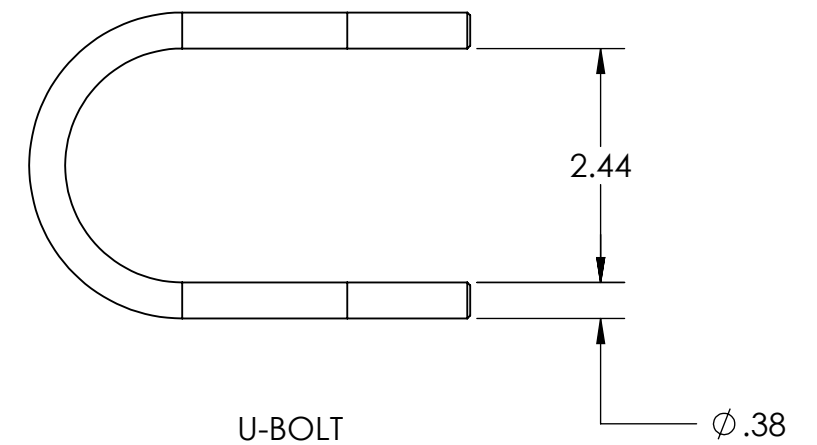
SCALE: 1:4 SIZE: B

THE INFORMATION ON THIS DRAWING IS PROPRIETARY AND IS NOT TO BE REVEALED TO THIRD PARTIES WITHOUT WRITTEN CONSENT OF A CORPORATE OFFICER OF USS, LLC.

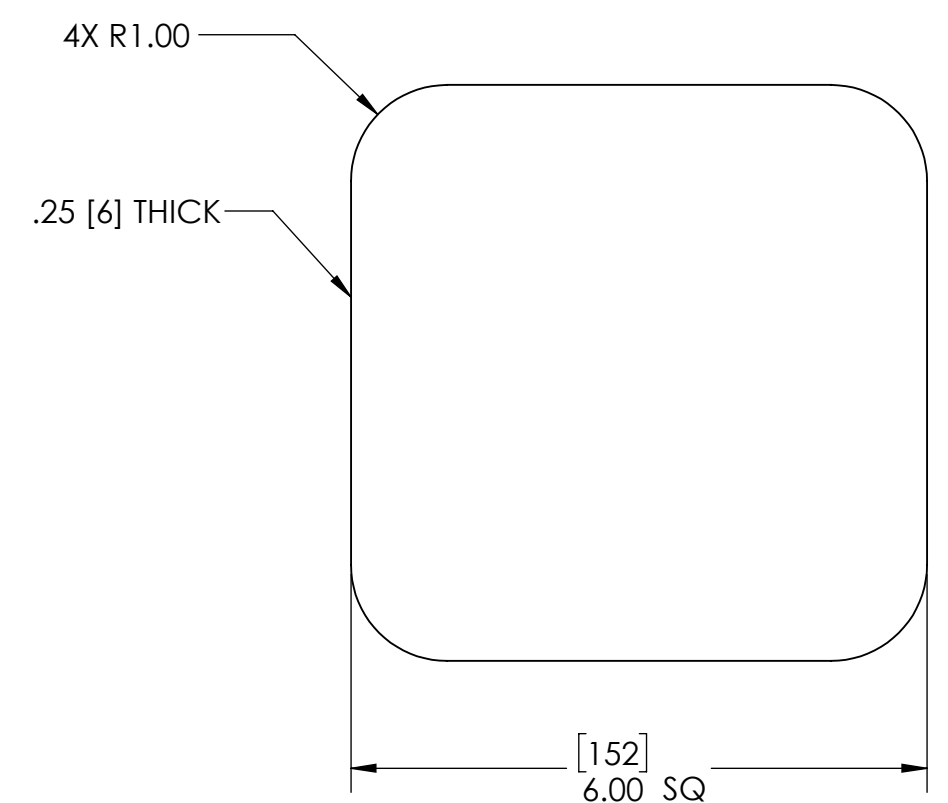


CROSSBAR

UPRIGHT



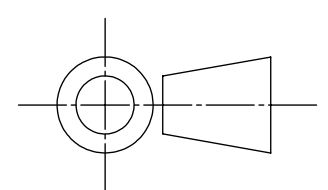
U-BOLT



BASE PLATE

STEEL

[MILLIMETERS]  
INCHES



APPROVALS	DATE
DRAWN DLL	06-25-24
CHECKED DLL	06-25-24
APPROVED CDM	06-25-24
SHEET 6 OF 7	
SCALE: 1:2	SIZE: B

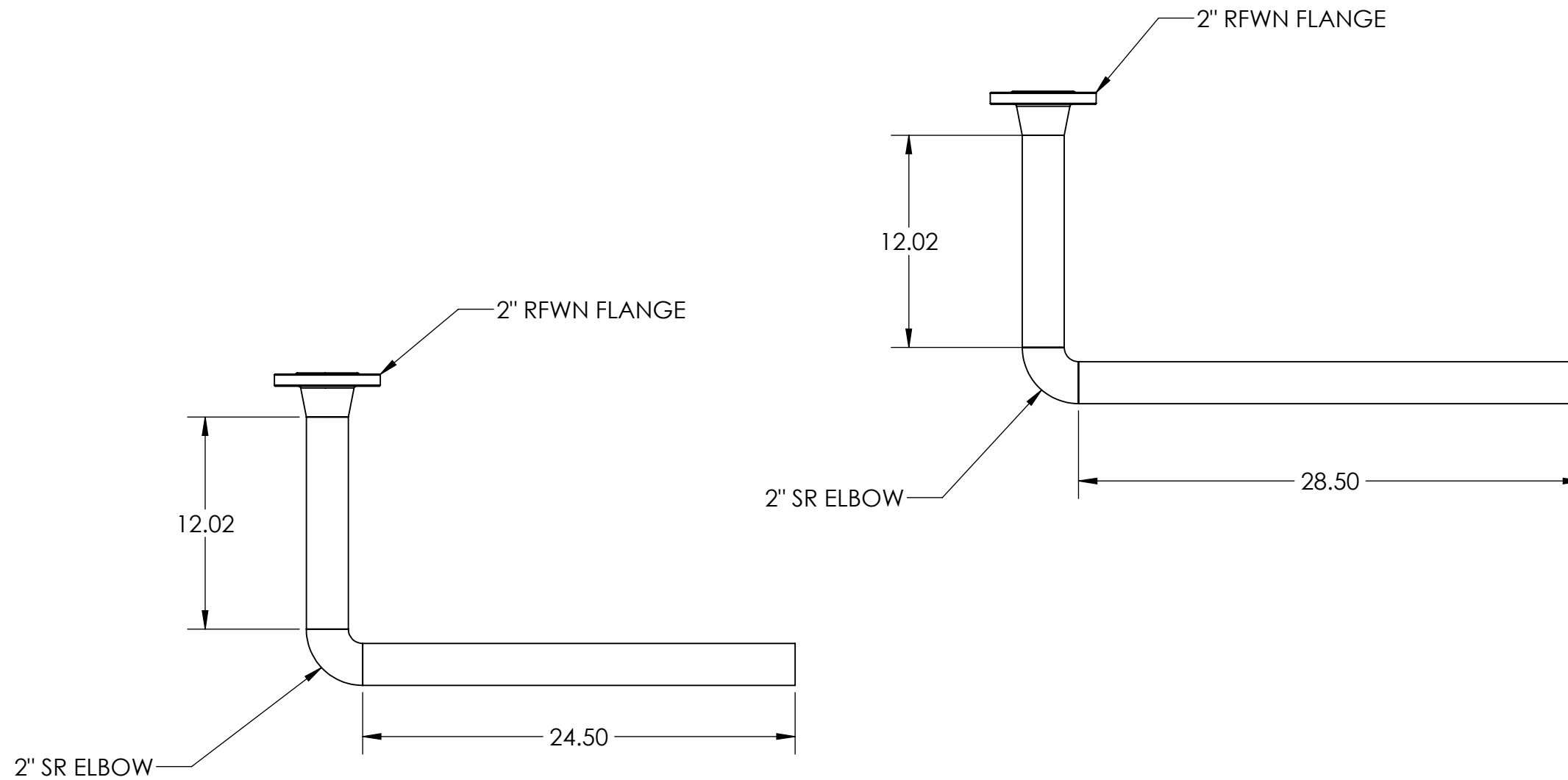
**USS, LLC**  
 PHONE: (260) 693-1172 FAX: (260) 693-1178  
 WEB SITE: WWW.USSPECIALISTS.COM

**USS27.5(14)-20x20-20x32-48.75D**

**HPV&LPD(2)[4]**

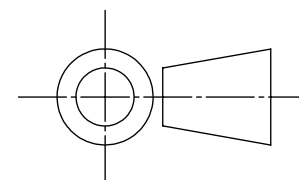
**PIPE SUPPORT PARTS**

THE INFORMATION ON THIS DRAWING IS PROPRIETARY AND IS NOT TO BE REVEALED TO THIRD PARTIES WITHOUT WRITTEN CONSENT OF A CORPORATE OFFICER OF USS, LLC.



STACK-UP COMPONENTS SHOWN TO SCALE. HOWEVER, CONTRACTOR SHOULD PROTOTYPE AND FIELD TEST FIRST ARTICLE BEFORE FABRICATING REMAINING STACK-UPS.

[MILLIMETERS]  
INCHES



APPROVALS	DATE
DRAWN DLL	06-25-24
CHECKED DLL	06-25-24
APPROVED CDM	06-25-24
SHEET 7 OF 7	
SCALE: 1:8	SIZE: B

**USS, LLC**  
 PHONE: (260) 693-1172 FAX: (260) 693-1178  
 WEB SITE: WWW.USSPECIALISTS.COM

**USS27.5(14)-20x20-20x32-48.75D**

**HPV&LPD(2)[4]**

**STACK-UPS**

THE INFORMATION ON THIS DRAWING IS PROPRIETARY AND IS NOT TO BE REVEALED TO THIRD PARTIES WITHOUT WRITTEN CONSENT OF A CORPORATE OFFICER OF USS, LLC.